

Disk Couplings

XBW XBS Specialty Couplings. Need only

Coupling Length Adjustment in 1mm Increments.

1mm Length Specification Adjustment

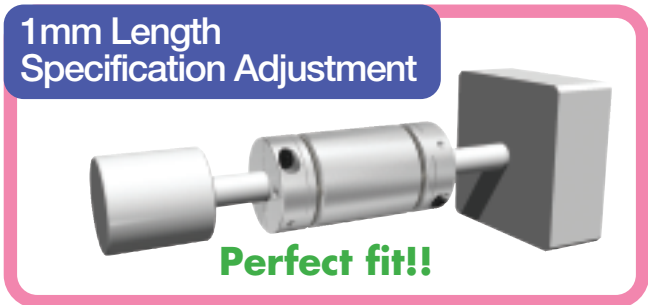
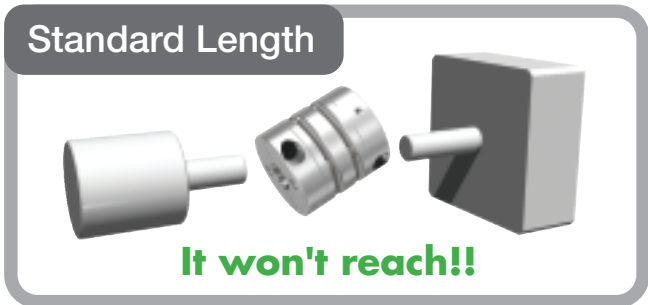
- We can adjust length specifications of the **XBW** disk coupling by 1mm increments.
- Ideal for wide gaps between shafts.
- If adjustments fall within designated ranges, order will be shipped within 6 working days.
- Adjustments falling outside of designated ranges can be manufactured in short time. Please inquire for delivery time.

Please contact us!

Customer Service

phone **+81-575-23-1162**
fax **+81-575-23-1129**
<http://www.nbk1560.com/english>
e-mail : info@nbk1560.com

Adjust the coupling length and...



**Need only one?
No problem.**



This way for details on dimensions.



Disk Couplings
Length Adjustment
Disk Quantity Specifications

one? We'll make it!

Coupling Attributes Can be Altered by Changing Disk Quantity

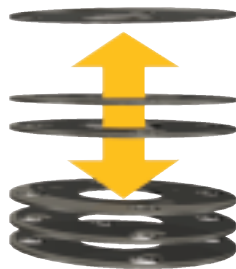
Disk Quantity Specifications

- Performance attributes of disk couplings **XBW** and **XBS** can be altered by increasing or decreasing the number of disks.
- Increasing the number of disks results in higher torsional stiffness while decreasing the number of disks results in greater flexibility.
- If disk quantity specifications fall within ± 1 disk of standard coupling specifications, order will be shipped within 6 working days.

Please contact us!

Customer Service

phone **+81-575-23-1162**
 fax **+81-575-23-1129**
<http://www.nbk1560.com/english>
 e-mail : info@nbk1560.com



Coupling becomes more flexible with fewer disks.

- Less load on bearing

Standard

Torsional stiffness increases with more disks.

- Higher response

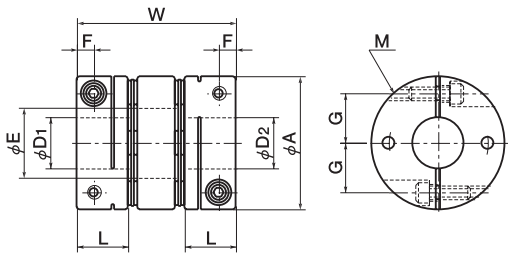


This way for details on dimensions.



Coupling Length Adjustment in 1mm Increments

1mm Length Specification Adjustment



unit: mm

Product Code	Designated Ranges W			A	L	E	F	G	M
	XBW	Min.	Max						
XBW-15C2-W	22	22	35	15	7.5	6.1	2.3	5.25	M2
XBW-19C2-W	25.5	26	40	19	9	9.5	2.5	7.1	M2
XBW-25C2-W	32.2	32	45	25	11	12.5	3.5	9.25	M2.5
XBW-27C2-W	32.2	32	45	27	11	14.5	3.5	10.25	M2.5
XBW-34C3-W	37.4	37	50	34	12	16.5	4	13	M3
XBW-39C2-W	46.6	47	50	39	15	20.5	5	14.5	M4
XBW-44C2-W	46.6	47	60	44	15	23	5	17	M4
XBW-56C3-W	60.4	61	75	56	20	28.5	6	21.25	M5

※ Rated torque, maximum torque, maximum rotational frequency, errors of eccentricity, errors of angularity and errors of shaft end-play data same as standard product **XBW**.

When Ordering



XBW-19C2-W30-6×8

Product Code Disk Quantity W: Length Specification D₁ D₂

← 1mm Length Specification Adjustment

XBW-19C3-6×8

Product Code Disk Quantity D₁ D₂

← Disk Quantity Specifications

XBW-19C3-W30-6×8

Product Code Disk Quantity W: Length Specification D₁ D₂

← 1mm Length Specification Adjustment + Disk Quantity Specifications

Differentiate Coupling Attributes through Disk Quantity

Disk Quantity Specifications

Disk Couplings
Length Adjustment
Disk Quantity Specifications



Specifications

Double Disk Coupling [XBW]					
Product Code		Disk Quantity	Static Torsional Stiffness (N · m/rad)	Eccentric Reaction Force Spring Constant (N/mm)	Thrust Spring Constant (N/mm)
XBW-15C1		1	150	98	45
XBW-15C2		2	200	115	60
XBW-15C3		3	250	122	110
XBW-19C1		1	250	35	12
XBW-19C2		2	450	75	30
XBW-19C3		3	490	100	60
XBW-25C1		1	700	37	12
XBW-25C2		2	850	72	25
XBW-25C3		3	900	98	38
XBW-27C1		1	800	41	12
XBW-27C2		2	1000	75	23
XBW-27C3		3	1100	94	34
XBW-34C2		2	1400	69	21
XBW-34C3		3	1600	80	30
XBW-34C4		4	1700	110	40
XBW-39C1		1	2500	72	25
XBW-39C2		2	3200	92	58
XBW-39C3		3	3300	106	80
XBW-44C1		1	3300	72	28
XBW-44C2		2	3900	103	59
XBW-44C3		3	4000	121	80
XBW-56C2		2	7500	111	30
XBW-56C3		3	9000	147	70
XBW-56C4		4	10000	189	90

[] signifies stock product specifications. Please use **[XBW]** product specifications.
 Reducing the quantity of disks by one from the stock product **[XBW]** effectively reduces rated torque and maximum torque to 70% of stock product specifications **[XBW]**.
 Increasing the quantity of disks by one from the stock product **[XBW]** retains the same rated torque and maximum torque specifications as the stock product **[XBW]**.
 Changing disk quantity specifications will not change specifications for maximum rotational frequency, errors of eccentricity, errors of angularity and errors of shaft end-play.
 Specifications are same as stock product **[XBW]**. (See pages P.38 ~ P.41)

Single Disk Coupling [XBS]				
Product Code		Disk Quantity	Static Torsional Stiffness (N · m/rad)	Thrust Spring Constant (N/mm)
XBS-15C1		1	200	60
XBS-15C2		2	300	85
XBS-15C3		3	400	150
XBS-19C1		1	500	30
XBS-19C2		2	600	70
XBS-19C3		3	700	100
XBS-25C1		1	850	20
XBS-25C2		2	1300	42
XBS-25C3		3	1400	75
XBS-27C1		1	1200	23
XBS-27C2		2	1600	45
XBS-27C3		3	1700	69
XBS-34C2		2	2300	45
XBS-34C3		3	2500	65
XBS-34C4		4	2600	80
XBS-39C1		1	4200	44
XBS-39C2		2	4600	80
XBS-39C3		3	4700	134
XBS-44C1		1	5000	45
XBS-44C2		2	6000	81
XBS-44C3		3	6300	133
XBS-56C2		2	13000	73
XBS-56C3		3	14000	85
XBS-56C4		4	15000	140

[] signifies stock product specifications. Please use **[XBS]** product specifications.
 Reducing the quantity of disks by one from the stock product **[XBS]** effectively reduces rated torque and maximum torque to 70% of stock product specifications **[XBS]**.
 Increasing the quantity of disks by one from the stock product **[XBS]** retains the same rated torque and maximum torque specifications as the stock product **[XBS]**.
 Changing disk quantity specifications will not change specifications for maximum rotational frequency, errors of eccentricity, errors of angularity and errors of shaft end-play.
 Specifications are same as stock product **[XBS]**. (See pages P.42 ~ P.45)