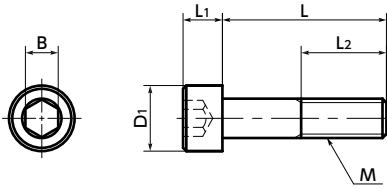




# SNST Hex Socket Head Cap Screws - Titanium

WEB Selection Tool  
 WEB CAD Download  
 Cleanroom wash & packaging  
 Chemical-proof  
 Non-Magnetic  
 Lightweight



## ● Physical property

	TB340C (Grade 2 Titanium)
Specific Gravity	4.51
Melting Point (°C)	1668
Longitudinal Elastic Modulus (GPa)	106
Thermal Conductivity (W / (m · K))	17.16
Linear Expansion Coefficient (K <sup>-1</sup> )	8.4 × 10 <sup>-6</sup>
Electric Resistance (μΩ · m)	0.55
Amplitude Permeability (μ)	1.0001 (Nonmagnetic)

● Values in chart are for reference only. They are not guaranteed values.

## ● Mechanical property

	TB340C (Grade 2 Titanium)
Tensile Strength (N/mm <sup>2</sup> )	340 - 510
0.2% Proof Stress (N/mm <sup>2</sup> )	215 or Higher
Elongation (%)	23 or Higher

● Values in chart are for reference only. They are not guaranteed values.

## ● Part number specification

### SNST-M5-20



- Specific gravity is approximately by 60% of stainless steel.
- Nonmagnetic.
- Excellent chemical and seawater resistance.
- About the features of titanium → P.xxxx
- Chemical polishing and brightening processing improve the screw surface. Furthermore, the screws are cleanroom washed, cleanroom packed, and comply with clean specifications that require no oil or foreign matter deposits.

**SNST**

**Unprocessed**



## ● Application

Lightweight applications in automobiles, aircrafts, spacecrafts, and robots FPD production equipment, semiconductor devices, electrical and electronic equipment, aquatic applications, and electrochemical plating

## ● Material/Finish

RoHS2 Compliant

	SNST
Main Body	TB340C (Grade 2 Titanium)

Unit : mm

Part Number	M	L											D1	L1	B	L2*1	Tension*2 Rupture Load (N)	Torsional*2 Torque (N · m)	Mass (g)		
<b>SNST-M3</b>	M3	5	6	8	10	12	16	20						5.5	3	2.5	Full Thread	3210	1.5	0.38 - 0.77	
<b>SNST-M4</b>	M4			8	10	12	16	20	25	30				7	4	3	20(L=30)	5610	3.4	0.94 - 2.1	
<b>SNST-M5</b>	M5				10	12	16	20	25	30	35			8.5	5	4	22(L≥30)	9080	7.1	1.5 - 3.6	
<b>SNST-M6</b>	M6				10	12	16	20	25	30	35	40	45	50	10	6	5	24(L≥35)	12800	12	2.7 - 7.5

\*1 : If the " L " value is not in parentheses, the screw is full thread.

\*2 : Values in chart are for reference only. They are not guaranteed values.

Part Number	Qty per pack
<b>SNST-M3</b>	1
<b>SNST-M4</b>	1
<b>SNST-M5</b>	1
<b>SNST-M6</b>	1

Individual Sales → P.xxxx  
 Cleanroom Wash & Packaging → P.xxxx  
 Screw Length Adjustment → P.xxxx  
 Vibration Resistant → P.xxxx  
 Modification process for captive use → P.xxxx

1 unit in 1 bag    Cleanroom washed and packed    Available / Add'l charge    Available / Add'l charge    Available / Add'l charge