

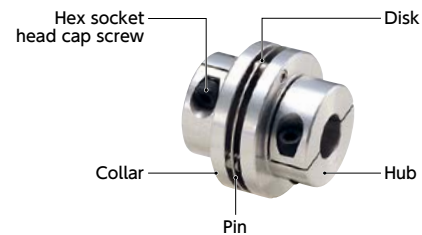
# MHS-C Flexible Couplings - Single - Disk Type

Zero Backlash

## Structure

### Clamping Type

#### MHS-C



### Applicable motors

	MHS-C
Servomotor	●
Stepping Motor	○
General-purpose Motor	●

○: Excellent ●: Available

### Property

	MHS-C
Zero Backlash	○
Allowable Misalignment	○

○: Excellent ○: Very good

- This is a disk type flexible coupling.
- The stainless steel disk allows eccentricity, and angular misalignment, and end-play.

### Application

XY stage / Transport device

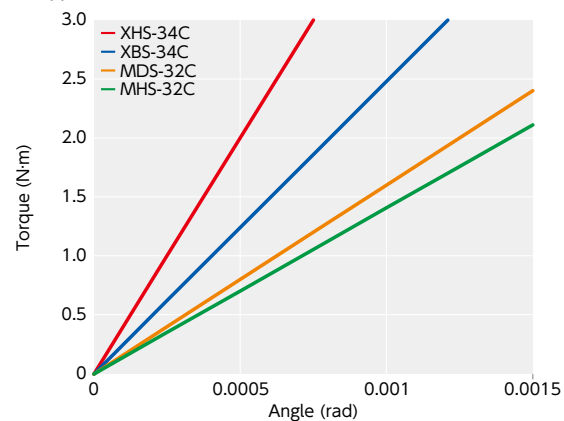
### Material/Finish



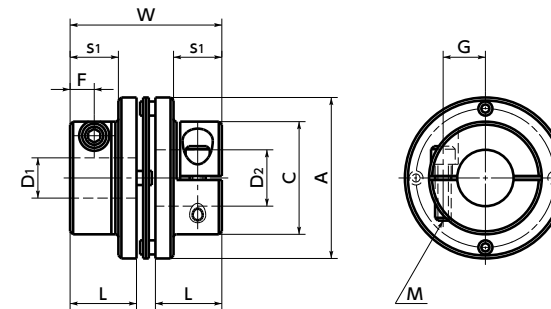
	MHS-C
Hub	A2017 Anodized*1
Disk	SUS301
Pin	SUS303
Collar	SUS303
Hex Socket Head Cap Screw	SCM435 Ferrosioferric Oxide Film (Black)

\*1: Due to manufacturing process requirements, couplings may have bores with or without surface treatment. This does not affect the performance of the couplings.

### Comparison of static torsional stiffness (Single Disk Type)




## MHS-C



## Dimensions

Unit : mm

Part Number	Max. Bore Diameter	A	L	W	C	s1	F	G	M	Screw Tightening Torque (N·m)
<b>MHS-32C</b>	6 ≤ D ≤ 10	32	13.7	32	21.5	9	4	8	M3	1.5
<b>MHS-40C</b>	8 ≤ D ≤ 14	40	16.5	38	28	12	6	10.5	M4	2.5
<b>MHS-50C</b>	12 ≤ D ≤ 20	50	19.4	44	39	15	7	14.75	M5	7
<b>MHS-63C</b>	15 ≤ D ≤ 24 24 < D ≤ 25	63	22.3	50	45	18	8	17 17.5	M6	12

Part Number	Standard Bore Diameter												
	D1/D2 												
	6	8	10	11	12	14	15	16	18	19	20	25	
MHS-32C	●	●	●										
MHS-40C		●	●	●	●	●							
MHS-50C					●	●	●	●	●	●	●		
MHS-63C							●	●	●	●	●	●	

- All products are provided with hex socket head cap screw.
- Recommended tolerance for shaft diameters is h6 and h7.
- For the shaft insertion amount to the coupling, see Mounting/maintenance.

## Performance

Part Number	Max. Bore Diameter (mm)	Rated *1 Torque (N·m)	Max. Rotational Frequency (min <sup>-1</sup> )	Moment *2 of Inertia (kg·m <sup>2</sup> )	Static Torsional Stiffness (N·m/rad)	Max. Lateral Misalignment (mm)	Max. Angular Misalignment (°)	Max. Axial Misalignment (mm)	Mass *2 (g)
<b>MHS-32C</b>	10	2	19000	4.5 × 10 <sup>-6</sup>	1300	0.02	1	±0.2	38
<b>MHS-40C</b>	14	4	15000	1.2 × 10 <sup>-5</sup>	2800	0.02	1	±0.2	66
<b>MHS-50C</b>	20	7.5	12000	3.7 × 10 <sup>-5</sup>	3700	0.02	1	±0.2	120
<b>MHS-63C</b>	25	10	10000	8.4 × 10 <sup>-5</sup>	5000	0.02	1	±0.2	190

\*1: Correction of rated torque due to load fluctuation is not required.

\*2: These are values with max. bore diameter.

### Precautions for Use

- In case of mounting on D-cut shaft, be careful about the position of the D-cut surface of the shaft. → P.xxxx
- There are sizes where the hex socket head bolt exceeds the hub outer diameter of the coupling and the rotating diameter is larger than the hub outer diameter. Please be careful of the interference of coupling.  
→ P.xxxx

### Related Products

The Single-Disk type Flexible Coupling **[XHS-C]** is compatible with the servomotor with 350% instantaneous max. torque is available.



### Part number specification

**MHS-32C-8-10**

1

2

Additional Keyway at Shaft Hole → P.xxxx Available / Add'l charge

Cleanroom Wash & Packaging → P.xxxx Please combine with Stainless Steel Screw Alteration Service

Change to Stainless Steel Screw → P.xxxx Available / Add'l charge