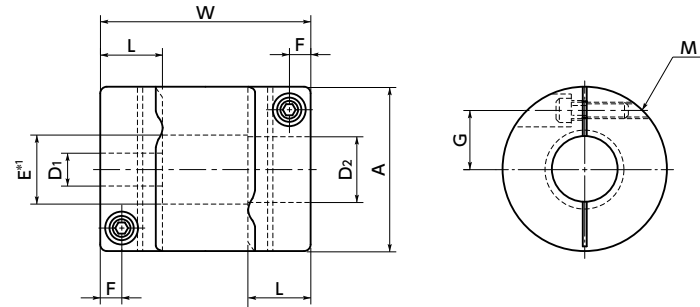


XGT-CS Flexible Couplings - High-gain Rubber Type - Single Clamp Type Additional Size

[WEB Selection Tool](#)
[WEB CAD Download](#)
[Zero Backlash](#)
[High gain supported](#)
[High torque](#)
[Vibration absorption](#)

XGT-CS



*1: $E = D_2 + 0.5(D_2 < 5)$
 $E = D_2 + 1(D_2 \geq 5)$

Dimensions

Unit : mm

Part Number	A	L	W	F	G	M	Screw Tightening Torque (N·m)
XGT-15CS	15	6.5	23	2.15	5	M1.6	0.25
XGT-19CS	19	7.7	26	2.65	6.5	M2	0.5
XGT-25CS	25	9.5	32	3.25	9	M2.5	1
XGT-27CS	27	9.5	32	3.25	10	M2.5	1
XGT-30CS	30	11	36	4	11	M3	1.5
XGT-34CS	34	12	38	4	12.25	M3	1.5
XGT-39CS	39	15.5	48	4.5	14.5	M4	2.5
XGT-44CS	44	15	48	4.75	16	M4	2.5
XGT-56CS	56	19.5	60	5.5	20	M5	7

Part Number	Standard Bore Diameter D1-D2									
XGT-15CS	3 - 5	3 - 6	4 - 4	4 - 5	4 - 6	4.5 - 5	5 - 5	5 - 6	6 - 6	
XGT-19CS	4 - 5	4 - 8	5 - 5	5 - 6	5 - 6.35	5 - 7	5 - 8	6 - 6	6 - 6.35	6 - 7
	6 - 8	6.35 - 6.35	6.35 - 8	8 - 8						
XGT-25CS	5 - 6	5 - 8	6 - 6	6 - 8	6 - 10	6 - 11	6 - 12	6.35 - 8	6.35 - 10	8 - 8
	8 - 10	8 - 11	8 - 12	9.525 - 9.525	10 - 10	10 - 12	12 - 12			
XGT-27CS	5 - 6	5 - 8	5 - 14	6 - 6	6 - 8	6 - 10	6 - 11	6 - 12	6 - 14	8 - 8
	8 - 10	8 - 11	8 - 12	8 - 14	10 - 10	10 - 12	10 - 14	12 - 12	12 - 14	14 - 14
XGT-30CS	8 - 8	8 - 10	8 - 11	8 - 12	8 - 14	8 - 15	10 - 10	10 - 11	10 - 12	10 - 14
	10 - 15	11 - 12	12 - 12	12 - 14	12 - 15	14 - 14	14 - 15	15 - 15		
XGT-34CS	8 - 8	8 - 10	8 - 11	8 - 12	8 - 14	8 - 15	10 - 10	10 - 11	10 - 12	10 - 14
	10 - 15	11 - 11	11 - 12	12 - 12	12 - 14	12 - 15	14 - 14	14 - 15	15 - 15	16 - 16
XGT-39CS	10 - 10	10 - 12	10 - 14	10 - 15	10 - 16	10 - 19	12 - 12	12 - 14	12 - 15	12 - 16
	12 - 19	12 - 20	12.7 - 12.7	14 - 14	14 - 15	14 - 16	15 - 15	15 - 16	15 - 19	16 - 16
17 - 17	20 - 20									
XGT-44CS	12 - 12	12 - 14	12 - 16	12 - 19	14 - 14	14 - 15	14 - 16	14 - 19	15 - 15	15 - 16
	15 - 19	15 - 20	16 - 16	16 - 19	17 - 17	19 - 20	20 - 20			
XGT-56CS	15 - 15	15 - 19	15 - 20	15 - 25	19 - 20	19 - 24	20 - 20	20 - 25	24 - 25	25 - 25

- All products are provided with hex socket head cap screw.
- Recommended tolerance for shaft diameters is h6 and h7.
- In case of mounting on D-cut shaft, be careful about the position of the D-cut surface of the shaft. → P.xxxx

Performance

Part Number	Max. Bore Diameter (mm)	Keyway Additional Modification Max. Bore Diameter (mm)	Rated *1 Torque (N·m)	Max. Rotational Frequency (min ⁻¹)	Moment of Inertia (kg·m ²)	Static Torsional Stiffness (N·m/rad)	Max. Eccentricity (mm)	Max. Angular Misalignment (°)	Max. Axial Misalignment (mm)	Mass *2 (g)
XGT-15CS	6	—	1.1	42000	2.3×10 ⁻⁷	43	0.15	1.5	±0.2	8
XGT-19CS	8	6	2.1	33000	6.9×10 ⁻⁷	88	0.15	1.5	±0.2	14
XGT-25CS	12	9	4	25000	2.5×10 ⁻⁶	140	0.15	1.5	±0.2	27
XGT-27CS	14	10	4	23000	3.4×10 ⁻⁶	140	0.15	1.5	±0.2	30
XGT-30CS	15	11	6.3	21000	6.0×10 ⁻⁶	220	0.2	1.5	±0.3	44
XGT-34CS	16	12	8	18000	1.0×10 ⁻⁵	390	0.2	1.5	±0.3	61
XGT-39CS	20	15	13.5	16000	2.3×10 ⁻⁵	520	0.2	1.5	±0.3	98
XGT-44CS	22	17	18	14000	3.7×10 ⁻⁵	640	0.2	1.5	±0.3	124
XGT-56CS	28	22	35	11000	1.2×10 ⁻⁴	1500	0.2	1.5	±0.3	252

*1: Correction of rated torque due to load fluctuation is not required. If ambient temperature exceeds 30°C, be sure to correct the rated torque with temperature correction factor shown in the following table.

The allowable operating temperature of XGT-CS is -20°C to 80°C.

The shaft's slip torque may be smaller than the coupling's rated torque depending on the shaft bore. → P.xxxx

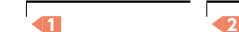
*2: These are values with max. bore diameter.

Ambient Temperature / Temperature Correction Factor

Ambient Temperature	Temperature Correction Factor
-20°C to 30°C	1.00
30°C to 40°C	0.80
40°C to 60°C	0.70
60°C to 80°C	0.55

Part number specification

XGT-34CS-11-12



[Additional Keyway at Shaft Hole → P.xxxx](#)
[Cleanroom Wash & Packaging → P.xxxx](#)
[Change to Stainless Steel Screw → P.xxxx](#)