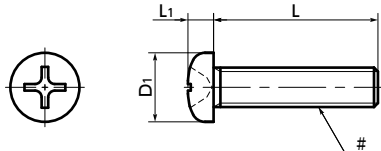


SPEG-P(INCH) Plastic Screws - Cross Recessed Pan Head Machine Screws - PEEK GF30 - Inch Thread

WEB Selection Tool
 WEB CAD Download
 Chemical-proof
 High strength



● Application

FPD production equipment / Semiconductor devices / Printed circuit board etching devices / Metallic surface treatment equipment and facilities / Chemical plants / Transformers / Electrical and electronic equipment / Hot water pumps / Chemical pumps

● Material/Finish

RoHS2 Compliant

SPEG-P(INCH)	
Main Body	PEEK GF30 (PEEK Containing Glass Fiber) (Light Brown) (Glass Fiber 30%)
Heat Resistance Temperature*1	260°C

*1: This is the value for the resin material. The operating temperature of the product changes with performance conditions such as tightening torque.

Precautions for Use

Because a cumulative pitch difference is created when PEEK screws are manufactured, use these screws with nuts. If a nut is not used, use a 20 mm (approx. 0.79") or less fit with female thread.

- Cross-recessed pan head machine screws made of PEEK containing 30% glass fiber. The tensile strength is approximately 1.7 times that of ordinary PEEK.
- Inch screw type.
- PEEK is a thermoplastic super engineering plastic superior in physical and chemical properties.
- Excellent chemical resistance. It remains almost unaffected by chemicals other than concentrated sulfuric acid, concentrated nitric acid, and concentrated hydrofluoric acid.
- With excellent heat resistance and water resistance, it retains strength at high temperatures.
- It features outstanding resistance to wear, shock, and fatigue.
- It also has high flame retardance which clears the UL 94 V-0 standard.
- Plastic screw properties and precautions for use
→ P.xxxx

Unit : inch

Part Number	#Nominal of Thread	L	D1	L1	Tension Rupture Load*1 (N)	Torsional Torque*1 (N·m)	Mass (g)
SPEG-#4-40-P	No.4-40UNC	1/4 5/16 3/8 1/2 5/8 3/4 7/8 1	0.219	0.08	434	0.23	0.089 - 0.19
SPEG-#6-32-P	No.6-32UNC	1/4 5/16 3/8 1/2 5/8 3/4 7/8 1	0.27	0.097	644	0.44	0.18 - 0.68

*1: Values in chart are for reference only. They are not guaranteed values. The recommended tightening torque is 50% of the torsional torque.

Part Number	per Pack Qty
SPEG-#4-40-P	10
SPEG-#6-32-P	10

● Related Products

PEEK hex nuts (inch thread) **SPE-N(INCH)** are available.
→ P.xxxx



● Part number specification

SPEG-#4-40-1/4-P

1
 2
 3

Order in number of packs.
The minimum order quantity is 1 piece. → P.xxxx

Individual Sales → P.xxxx	Cleanroom Wash & Packaging → P.xxxx	Screw Length Adjustment → P.xxxx	Vibration Resistant → P.xxxx	Modification process for captive use → P.xxxx
Available / Add'l charge	Available / Add'l charge	Available / Add'l charge	Not Available	Not Available