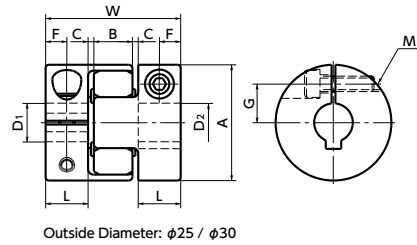
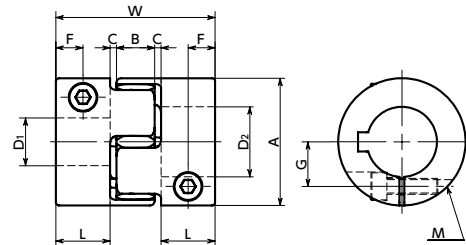


MJS-CSK Flexible Coupling - Jaw - Type (Short) - Clamping + Key Type Additional Size

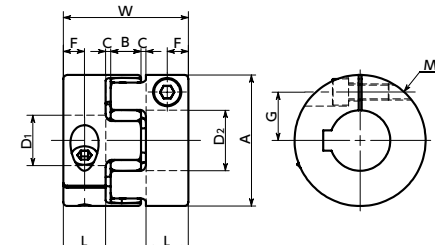
WEB Selection Tool | WEB CAD Download | High torque | Vibration absorption | Electrical Insulation



Outside Diameter: $\phi 25 / \phi 30$

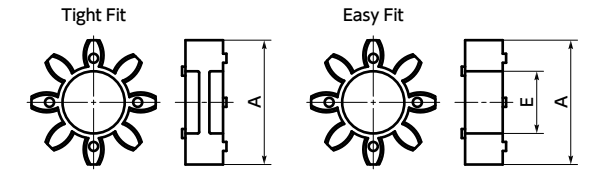


Outside Diameter: $\phi 40$



Outside Diameter: $\phi 55 / \phi 65$

Sleeve Details



Ambient Temperature / Temperature Correction Factor

Ambient Temperature	Temperature Correction Factor
-20°C to 30°C	1.00
30°C to 40°C	0.80
40°C to 60°C	0.70

Dimensions

Unit : mm

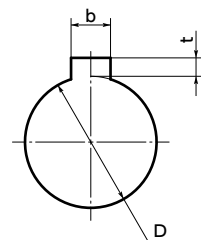
Part Number	Bore Diameter	A	L	W	B	C*1	Sleeve E	F	G	M	Screw Tightening Torque (N·m)
MJS-25CSK	10	25	8	26	8	1	8	4	9	M3	1.5
	11-12								9.5	M2.5	1
MJS-30CSK	10-12	30	9.5	32	10	1.5	10	4.75	10	M4	3.5
	14-16								11	M3	1.5
MJS-40CSK	10-20	40	17	50	12	2	17	8.5	14	M5	8
	22-25								15.75	M4	3.5
MJS-55CSK	10-28	55	18	54	14	2	26	9	20	M6	13
	30-32								21	M5	8
MJS-65CSK	14-32	65	21	62	15	2.5	29.5	10.5	24	M8	28
	35-38								25	M6	13

*1: Use with C Dimension

Part Number	Standard Bore Diameter																	
	D1 · D2	10	11	12	14	15	16	18	19	20	22	24	25	28	30	32	35	38
MJS-25CSK	●	●	●															
MJS-30CSK	●	●	●	●	●	●												
MJS-40CSK	●	●	●	●	●	●	●	●	●	●	●	●	●	●	●	●	●	●
MJS-55CSK	●	●	●	●	●	●	●	●	●	●	●	●	●	●	●	●	●	●
MJS-65CSK				●	●	●	●	●	●	●	●	●	●	●	●	●	●	●

- All products are provided with hex socket head cap screw.
- Recommended dimensional allowances of applicable shaft diameter are h6 and h7.
- A set of hubs with clamping + key type for one side and clamping type for the other side is available upon request.
- In case of mounting on D-cut shaft, be careful about the position of the D-cut surface of the shaft. → P.xxxx

Details of Shaft Hole



Unit : mm

Standard Bore Diameter D	Keyway				Key Nominal Dimension b x h
	b		t		
	Standard Dimension	Allowance (JS9)	Standard Dimension	Allowance	
10 · 11 · 12	4	±0.0150	1.8	$^{+0.1}_0$	4×4
14 · 15 · 16	5	±0.0150	2.3	$^{+0.1}_0$	5×5
18 · 19 · 20 · 22	6	±0.0150	2.8	$^{+0.1}_0$	6×6
24 · 25 · 28 · 30	8	±0.0180	3.3	$^{+0.2}_0$	8×7
32 · 35 · 38	10	±0.0180	3.3	$^{+0.2}_0$	10×8

Additional Keyway at Shaft Hole → P.xxxx | Cleanroom Wash & Packaging → P.xxxx | Change to Stainless Steel Screw → P.xxxx

Performance

Part Number	Sleeve		Max. Bore Diameter (mm)	Rated ^{*1} torque (N·m)	Max. ^{*1} torque (N·m)	Zero Backlash ^{*3} Allowable Transmission Torque (N·m)	Max. Rotational Frequency (min ⁻¹)	Moment ^{*2} of Inertia (kg·m ²)	Static Torsional Stiffness (N·m/rad)	Max. Lateral Misalignment (mm)	Max. Angular Misalignment (°)	Max. Axial Misalignment (mm)	Mass ^{*2} (g)	Sleeve Hardness (JIS)
	Tight Fit	Easy Fit												
MJS-25CSK	BL	EBL	12	3	6	0.4	25000	2.5 × 10 ⁻⁶	32	0.2	1	$^{+0.9}_0$	25	A80
MJS-30CSK	BL	EBL	16	4	8	0.5	21000	5.4 × 10 ⁻⁶	46	0.2	1	$^{+1.0}_0$	38	
MJS-40CSK	BL	EBL	25	4.9	9.8	1.2	15000	2.7 × 10 ⁻⁵	380	0.15	1	$^{+1.2}_0$	96	
MJS-55CSK	BL	EBL	32	17	34		11000	1.0 × 10 ⁻⁴	1400	0.2	1	$^{+1.4}_0$	210	
MJS-65CSK	BL	EBL	38	46	92		9000	2.3 × 10 ⁻⁴	2800	0.2	1	$^{+1.5}_0$	330	
MJS-25CSK	WH	EWH	12	5	10	0.4	25000	2.5 × 10 ⁻⁶	60	0.15	1	$^{+0.9}_0$	25	
MJS-30CSK	WH	EWH	16	7.5	15	0.5	21000	5.4 × 10 ⁻⁶	73	0.15	1	$^{+1.0}_0$	38	
MJS-40CSK	WH	EWH	25	10	20	1.2	15000	2.7 × 10 ⁻⁵	570	0.1	1	$^{+1.2}_0$	96	
MJS-55CSK	WH	EWH	32	35	70		11000	1.0 × 10 ⁻⁴	1600	0.15	1	$^{+1.4}_0$	210	
MJS-65CSK	WH	EWH	38	95	190		9000	2.3 × 10 ⁻⁴	3000	0.15	1	$^{+1.5}_0$	330	
MJS-25CSK	RD	ERD	12	7.2	14.4	0.4	25000	2.5 × 10 ⁻⁶	120	0.1	1	$^{+0.9}_0$	25	A98
MJS-30CSK	RD	ERD	16	12.5	25	0.5	21000	5.4 × 10 ⁻⁶	130	0.1	1	$^{+1.0}_0$	38	
MJS-40CSK	RD	ERD	25	17	34	1.2	15000	2.7 × 10 ⁻⁵	1200	0.1	1	$^{+1.2}_0$	96	
MJS-55CSK	RD	ERD	32	60	120		11000	1.0 × 10 ⁻⁴	2600	0.1	1	$^{+1.4}_0$	210	
MJS-65CSK	RD	ERD	38	160	320		9000	2.3 × 10 ⁻⁴	4900	0.1	1	$^{+1.5}_0$	330	
MJS-25CSK	GR	EGR	12	9.6	19.2	0.4	25000	2.5 × 10 ⁻⁶	160	0.08	1	$^{+0.9}_0$	25	
MJS-30CSK	GR	EGR	16	16	32	0.5	21000	5.4 × 10 ⁻⁶	200	0.08	1	$^{+1.0}_0$	38	
MJS-40CSK	GR	EGR	25	21	42	1.2	15000	2.7 × 10 ⁻⁵	3000	0.08	1	$^{+1.2}_0$	96	
MJS-55CSK	GR	EGR	32	75	150		11000	1.0 × 10 ⁻⁴	9000	0.08	1	$^{+1.4}_0$	210	
MJS-65CSK	GR	EGR	38	200	400		9000	2.3 × 10 ⁻⁴	13000	0.08	1	$^{+1.5}_0$	330	

*1: Correction of rated torque and max. torque due to load fluctuation is not required. However, if ambient temperature exceeds 30°C, be sure to correct the rated torque and max. torque with temperature correction factor shown in the table. MJS-CSK's allowable operating temperature is -20°C to 60°C.

*2: These are values with max. bore diameter.

*3: For transmission with Zero Backlash, please use a tight fit sleeve.

Part number specification

MJS-40CSK-EBL-14-16

