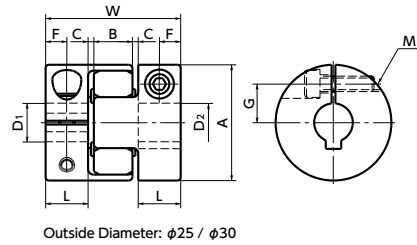
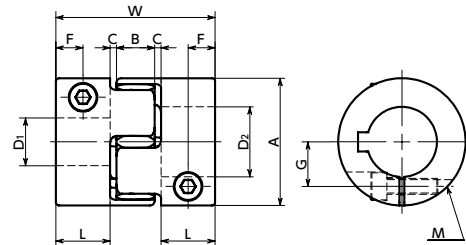


# MJS-CSK Flexible Coupling - Jaw - Type (Short) - Clamping + Key Type Additional Size

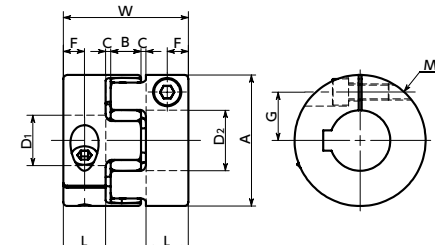
WEB Selection Tool WEB CAD Download High torque Vibration absorption Electrical Insulation



Outside Diameter:  $\phi 25 / \phi 30$

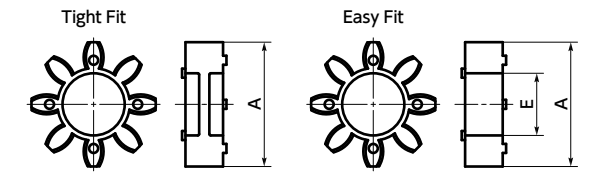


Outside Diameter:  $\phi 40$



Outside Diameter:  $\phi 55 / \phi 65$

### Sleeve Details



### Ambient Temperature / Temperature Correction Factor

| Ambient Temperature | Temperature Correction Factor |
|---------------------|-------------------------------|
| -20°C to 30°C       | 1.00                          |
| 30°C to 40°C        | 0.80                          |
| 40°C to 60°C        | 0.70                          |

## Dimensions

Unit : mm

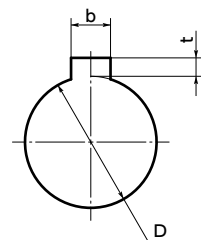
| Part Number      | Bore Diameter | A  | L   | W  | B  | C*1 | Sleeve E | F    | G     | M    | Screw Tightening Torque (N·m) |
|------------------|---------------|----|-----|----|----|-----|----------|------|-------|------|-------------------------------|
| <b>MJS-25CSK</b> | D=10          | 25 | 8   | 26 | 8  | 1   | 8        | 4    | 9     | M3   | 1.5                           |
|                  | 10 < D ≤ 12   |    |     |    |    |     |          |      | 9.5   | M2.5 | 1                             |
| <b>MJS-30CSK</b> | 10 ≤ D ≤ 12   | 30 | 9.5 | 32 | 10 | 1.5 | 10       | 4.75 | 10    | M4   | 3.5                           |
|                  | 12 < D ≤ 16   |    |     |    |    |     |          |      | 11    | M3   | 1.5                           |
| <b>MJS-40CSK</b> | 10 ≤ D ≤ 20   | 40 | 17  | 50 | 12 | 2   | 17       | 8.5  | 14    | M5   | 8                             |
|                  | 20 < D ≤ 25   |    |     |    |    |     |          |      | 15.75 | M4   | 3.5                           |
| <b>MJS-55CSK</b> | 10 ≤ D ≤ 28   | 55 | 18  | 54 | 14 | 2   | 26       | 9    | 20    | M6   | 13                            |
|                  | 28 < D ≤ 32   |    |     |    |    |     |          |      | 21    | M5   | 8                             |
| <b>MJS-65CSK</b> | 14 ≤ D ≤ 32   | 65 | 21  | 62 | 15 | 2.5 | 29.5     | 10.5 | 24    | M8   | 28                            |
|                  | 32 < D ≤ 38   |    |     |    |    |     |          |      | 25    | M6   | 13                            |

\*1: Use with C Dimension

| Part Number      | Standard Bore Diameter |    |    |    |    |    |    |    |    |    |    |    |    |    |    |    |    |    |
|------------------|------------------------|----|----|----|----|----|----|----|----|----|----|----|----|----|----|----|----|----|
|                  | D1 · D2                | 10 | 11 | 12 | 14 | 15 | 16 | 18 | 19 | 20 | 22 | 24 | 25 | 28 | 30 | 32 | 35 | 38 |
| <b>MJS-25CSK</b> | ●                      | ●  | ●  |    |    |    |    |    |    |    |    |    |    |    |    |    |    |    |
| <b>MJS-30CSK</b> | ●                      | ●  | ●  | ●  | ●  | ●  |    |    |    |    |    |    |    |    |    |    |    |    |
| <b>MJS-40CSK</b> | ●                      | ●  | ●  | ●  | ●  | ●  | ●  | ●  | ●  | ●  | ●  | ●  | ●  | ●  | ●  | ●  | ●  | ●  |
| <b>MJS-55CSK</b> | ●                      | ●  | ●  | ●  | ●  | ●  | ●  | ●  | ●  | ●  | ●  | ●  | ●  | ●  | ●  | ●  | ●  | ●  |
| <b>MJS-65CSK</b> |                        |    |    | ●  | ●  | ●  | ●  | ●  | ●  | ●  | ●  | ●  | ●  | ●  | ●  | ●  | ●  | ●  |

- All products are provided with hex socket head cap screw.
- Recommended dimensional allowances of applicable shaft diameter are h6 and h7.
- A set of hubs with clamping + key type for one side and clamping type for the other side is available upon request.
- In case of mounting on D-cut shaft, be careful about the position of the D-cut surface of the shaft. → P.xxxx

### Details of Shaft Hole



Unit : mm

| Standard Bore Diameter D | Keyway             |                 |                    |             | Key Nominal Dimension b x h |
|--------------------------|--------------------|-----------------|--------------------|-------------|-----------------------------|
|                          | b                  |                 | t                  |             |                             |
|                          | Standard Dimension | Allowance (JS9) | Standard Dimension | Allowance   |                             |
| 10 · 11 · 12             | 4                  | ±0.0150         | 1.8                | $^{+0.1}_0$ | 4×4                         |
| 14 · 15 · 16             | 5                  | ±0.0150         | 2.3                | $^{+0.1}_0$ | 5×5                         |
| 18 · 19 · 20 · 22        | 6                  | ±0.0150         | 2.8                | $^{+0.1}_0$ | 6×6                         |
| 24 · 25 · 28 · 30        | 8                  | ±0.0180         | 3.3                | $^{+0.2}_0$ | 8×7                         |
| 32 · 35 · 38             | 10                 | ±0.0180         | 3.3                | $^{+0.2}_0$ | 10×8                        |

Additional Keyway at Shaft Hole → P.xxxx Cleanroom Wash & Packaging → P.xxxx Change to Stainless Steel Screw → P.xxxx Please feel free to contact us Available / Add'l charge

## Performance

| Part Number      | Sleeve    |          | Max. Bore Diameter (mm) | Rated <sup>*1</sup> torque (N·m) | Max. <sup>*1</sup> torque (N·m) | Zero Backlash <sup>*3</sup> Allowable Transmission Torque (N·m) | Max. Rotational Frequency (min <sup>-1</sup> ) | Moment <sup>*2</sup> of Inertia (kg·m <sup>2</sup> ) | Static Torsional Stiffness (N·m / rad) | Max. Lateral Misalignment (mm) | Max. Angular Misalignment (°) | Max. Axial Misalignment (mm) | Mass <sup>*2</sup> (g) | Sleeve Hardness (JIS) |
|------------------|-----------|----------|-------------------------|----------------------------------|---------------------------------|-----------------------------------------------------------------|------------------------------------------------|------------------------------------------------------|----------------------------------------|--------------------------------|-------------------------------|------------------------------|------------------------|-----------------------|
|                  | Tight Fit | Easy Fit |                         |                                  |                                 |                                                                 |                                                |                                                      |                                        |                                |                               |                              |                        |                       |
| <b>MJS-25CSK</b> | BL        | EBL      | 12                      | 3                                | 6                               | 0.4                                                             | 25000                                          | 2.5 x 10 <sup>-6</sup>                               | 32                                     | 0.2                            | 1                             | $^{+0.9}_0$                  | 25                     | A80                   |
| <b>MJS-30CSK</b> | BL        | EBL      | 16                      | 4                                | 8                               | 0.5                                                             | 21000                                          | 5.4 x 10 <sup>-6</sup>                               | 46                                     | 0.2                            | 1                             | $^{+1.0}_0$                  | 38                     |                       |
| <b>MJS-40CSK</b> | BL        | EBL      | 25                      | 4.9                              | 9.8                             | 1.2                                                             | 15000                                          | 2.7 x 10 <sup>-5</sup>                               | 380                                    | 0.15                           | 1                             | $^{+1.2}_0$                  | 96                     |                       |
| <b>MJS-55CSK</b> | BL        | EBL      | 32                      | 17                               | 34                              |                                                                 | 11000                                          | 1.0 x 10 <sup>-4</sup>                               | 1400                                   | 0.2                            | 1                             | $^{+1.4}_0$                  | 210                    |                       |
| <b>MJS-65CSK</b> | BL        | EBL      | 38                      | 46                               | 92                              |                                                                 | 9000                                           | 2.3 x 10 <sup>-4</sup>                               | 2800                                   | 0.2                            | 1                             | $^{+1.5}_0$                  | 330                    |                       |
| <b>MJS-25CSK</b> | WH        | EWH      | 12                      | 5                                | 10                              | 0.4                                                             | 25000                                          | 2.5 x 10 <sup>-6</sup>                               | 60                                     | 0.15                           | 1                             | $^{+0.9}_0$                  | 25                     |                       |
| <b>MJS-30CSK</b> | WH        | EWH      | 16                      | 7.5                              | 15                              | 0.5                                                             | 21000                                          | 5.4 x 10 <sup>-6</sup>                               | 73                                     | 0.15                           | 1                             | $^{+1.0}_0$                  | 38                     |                       |
| <b>MJS-40CSK</b> | WH        | EWH      | 25                      | 10                               | 20                              | 1.2                                                             | 15000                                          | 2.7 x 10 <sup>-5</sup>                               | 570                                    | 0.1                            | 1                             | $^{+1.2}_0$                  | 96                     |                       |
| <b>MJS-55CSK</b> | WH        | EWH      | 32                      | 35                               | 70                              |                                                                 | 11000                                          | 1.0 x 10 <sup>-4</sup>                               | 1600                                   | 0.15                           | 1                             | $^{+1.4}_0$                  | 210                    |                       |
| <b>MJS-65CSK</b> | WH        | EWH      | 38                      | 95                               | 190                             |                                                                 | 9000                                           | 2.3 x 10 <sup>-4</sup>                               | 3000                                   | 0.15                           | 1                             | $^{+1.5}_0$                  | 330                    |                       |
| <b>MJS-25CSK</b> | RD        | ERD      | 12                      | 7.2                              | 14.4                            | 0.4                                                             | 25000                                          | 2.5 x 10 <sup>-6</sup>                               | 120                                    | 0.1                            | 1                             | $^{+0.9}_0$                  | 25                     | A98                   |
| <b>MJS-30CSK</b> | RD        | ERD      | 16                      | 12.5                             | 25                              | 0.5                                                             | 21000                                          | 5.4 x 10 <sup>-6</sup>                               | 130                                    | 0.1                            | 1                             | $^{+1.0}_0$                  | 38                     |                       |
| <b>MJS-40CSK</b> | RD        | ERD      | 25                      | 17                               | 34                              | 1.2                                                             | 15000                                          | 2.7 x 10 <sup>-5</sup>                               | 1200                                   | 0.1                            | 1                             | $^{+1.2}_0$                  | 96                     |                       |
| <b>MJS-55CSK</b> | RD        | ERD      | 32                      | 60                               | 120                             |                                                                 | 11000                                          | 1.0 x 10 <sup>-4</sup>                               | 2600                                   | 0.1                            | 1                             | $^{+1.4}_0$                  | 210                    |                       |
| <b>MJS-65CSK</b> | RD        | ERD      | 38                      | 160                              | 320                             |                                                                 | 9000                                           | 2.3 x 10 <sup>-4</sup>                               | 4900                                   | 0.1                            | 1                             | $^{+1.5}_0$                  | 330                    |                       |
| <b>MJS-25CSK</b> | GR        | EGR      | 12                      | 9.6                              | 19.2                            | 0.4                                                             | 25000                                          | 2.5 x 10 <sup>-6</sup>                               | 160                                    | 0.08                           | 1                             | $^{+0.9}_0$                  | 25                     |                       |
| <b>MJS-30CSK</b> | GR        | EGR      | 16                      | 16                               | 32                              | 0.5                                                             | 21000                                          | 5.4 x 10 <sup>-6</sup>                               | 200                                    | 0.08                           | 1                             | $^{+1.0}_0$                  | 38                     |                       |
| <b>MJS-40CSK</b> | GR        | EGR      | 25                      | 21                               | 42                              | 1.2                                                             | 15000                                          | 2.7 x 10 <sup>-5</sup>                               | 3000                                   | 0.08                           | 1                             | $^{+1.2}_0$                  | 96                     |                       |
| <b>MJS-55CSK</b> | GR        | EGR      | 32                      | 75                               | 150                             |                                                                 | 11000                                          | 1.0 x 10 <sup>-4</sup>                               | 9000                                   | 0.08                           | 1                             | $^{+1.4}_0$                  | 210                    |                       |
| <b>MJS-65CSK</b> | GR        | EGR      | 38                      | 200                              | 400                             |                                                                 | 9000                                           | 2.3 x 10 <sup>-4</sup>                               | 13000                                  | 0.08                           | 1                             | $^{+1.5}_0$                  | 330                    |                       |

\*1: Correction of rated torque and max. torque due to load fluctuation is not required. However, if ambient temperature exceeds 30°C, be sure to correct the rated torque and max. torque with temperature correction factor shown in the table. **MJS-CSK**'s allowable operating temperature is -20°C to 60°C.

\*2: These are values with max. bore diameter.

\*3: For transmission with Zero Backlash, please use a tight fit sleeve.

### Part number specification

**MJS-40CSK-EBL-14-16**

