

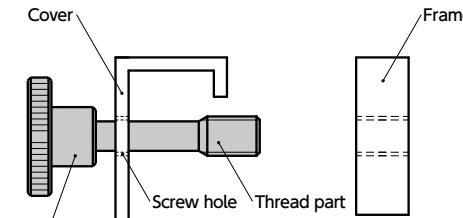
• **KNM-SC** has a round-shaped thread tip to be distinguished from **KNMS-SC**.

- Captive type knurled knob. Prevents fall-off and loss of the knob.
- Foreign matter entry countermeasures and CE marking support (→ P.xxxx).
- There are 2 material types.
 - KNM-SC** — Made of Steel
 - KNMS-SC** — Made of Stainless Steel
- **KNMS-SC** is made of SUS304. For applications including food processing machinery, packaging machinery, etc., where corrosion resistance is called for.
- A wide variety of screw sizes from M3 to M10.
- Material/Finish RoHS2 Compliant

	KNM-SC	KNMS-SC
Main Body	SWCH10R Buffing / Chrome Plating	SUS304



- Installation example
Make a screw hole in the cover, then pass the knob thread through it. Even when the screw is removed from the frame, the knob does not fall out from the cover because the knob thread catches on the screw hole of the cover.



KNM-SC | **KNMS-SC** Captive knurled knob

- ⚠ **Precautions for Use**
Screw hole inner diameter on the cover side shall be at least d₁.
The cover thickness should be 0.8mm or above.

Dimensions

Unit : mm

Part Number <small>Made of Steel</small>	Part Number <small>Made of Stainless Steel</small>	D	M (Coarse)		Lm	H	s	A	d	d ₁	Mass (g)
			Nominal of Thread	Pitch							
KNM-12-M3-SC	KNMS-12-M3-SC	12	M3	0.5	4	7.5	5	2.5	6	2.2	3 - 4
KNM-16-M4-SC	KNMS-16-M4-SC	16	M4	0.7	5	9.5	6	3.5	8	3	8 - 9
KNM-20-M5-SC	KNMS-20-M5-SC	20	M5	0.8	6	11.5	7.5	4	10	3.9	15 - 16
KNM-24-M6-SC	KNMS-24-M6-SC	24	M6	1	8	15	10	5	12	4.6	28 - 30
KNM-30-M8-SC	KNMS-30-M8-SC	30	M8	1.25	10	18	12	6	16	6.3	55 - 59
KNM-36-M10-SC	KNMS-36-M10-SC	36	M10	1.5	12	23	15	8	20	8	107 - 115

KNM-SC Made of Steel | **KNMS-SC** Made of Stainless Steel

Part Number	L (mm) ◀ 2						
	10	16	20	25	30	40	
KNM-12-M3-SC	●	●					
KNM-16-M4-SC	●	●					
KNM-20-M5-SC	●	●	●				
KNM-24-M6-SC		●	●	●	●		
KNM-30-M8-SC		●	●	●	●		
KNM-36-M10-SC			●	●	●	●	
KNMS-12-M3-SC	●	●					
KNMS-16-M4-SC	●	●					
KNMS-20-M5-SC	●	●	●				
KNMS-24-M6-SC		●	●	●	●		
KNMS-30-M8-SC		●	●	●	●		
KNMS-36-M10-SC			●	●	●	●	

• Related Products

Captive Wing Knobs **KWBS-SC** is available.
→ P.xxxx



- Part number specification

KNM-24-M6-20-SC

◀ 1 ◀ 2 ◀ 1

Select a ◀ 2 thread length L from the dimension table.

Cleanroom Wash & Packaging → P.xxxx	Screw Combination → P.xxxx	Screw Length Adjustment → P.xxxx	Vibration Resistant → P.xxxx	Laser Marking → P.xxxx
S.S. only/ Add'l charge	Not Available	Not Available	Not Available	S.S. only/ Add'l charge