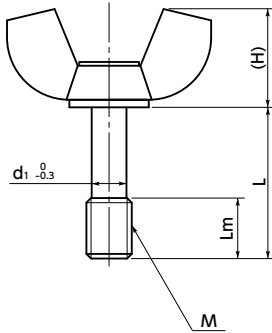
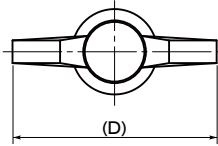


# KWBS-SC Captive Wing Knobs



SUS Stainless steel



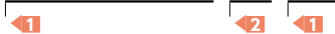
● Material/Finish



	<b>KWBS-SC</b>
Main Body	SUSXM7 (Equivalent to SUS304)

● Part number specification

**KWBS-21-M4-10-SC**

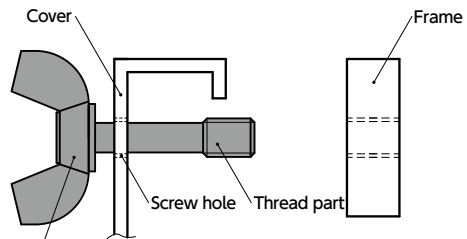


For **2** screw length L, select from the sizes marked with ● in the table.

- Captive type wing knob. Prevents fall-off and loss of the knob.
- Foreign matter entry countermeasures in food processing machinery and so on, as well as CE marking support (→ P.xxxx).
- Made of stainless steel superior in corrosion resistance.
- The shape allows easy operation and application of force.

● Installation example

Make a screw hole in the cover, then pass the knob thread through it. Even when the screw is removed from the frame, the knob does not fall out from the cover because the knob thread catches on the screw hole of the cover.



**KWBS-SC** Captive wing knob

**⚠ Precautions for Use**

Screw hole inner diameter on the cover side shall be at least  $d_1$ .

The cover thickness should be 0.8mm or above.

## Dimensions

Unit : mm

Part Number <b>1</b>	D	M (Coarse)		Lm	H	d1	Mass (g)
		Nominal of Thread	Pitch				
<b>KWBS-21-M4-SC</b>	21	M4	0.7	5	11	3	5.5 - 6
<b>KWBS-21-M5-SC</b>	21	M5	0.8	6	11	3.9	6.5 - 7
<b>KWBS-27-M6-SC</b>	27	M6	1	8	13	4.5	10 - 12
<b>KWBS-31-M8-SC</b>	31	M8	1.25	10	16	6.3	18 - 20

Part Number	L (mm) <b>2</b>			
	10	15	20	25
<b>KWBS-21-M4-SC</b>	●	●		
<b>KWBS-21-M5-SC</b>		●	●	
<b>KWBS-27-M6-SC</b>		●	●	●
<b>KWBS-31-M8-SC</b>			●	●

Cleanroom Wash & Packaging → P.xxxx	Screw Combination → P.xxxx	Screw Length Adjustment → P.xxxx	Vibration Resistant → P.xxxx	Laser Marking → P.xxxx
Available / Add'l charge	Not Available	Not Available	Not Available	Not Available