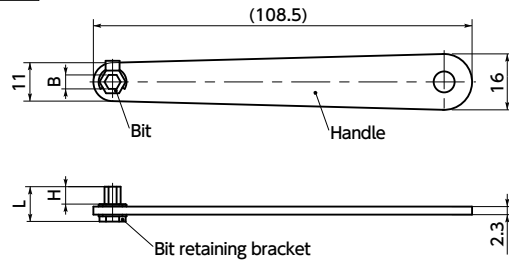


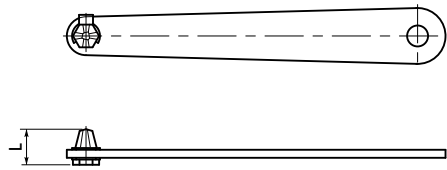
SKND Low Profile Screwdrivers for Extremely Limited Access Spaces **NEW**

WEB Selection Tool WEB CAD Download

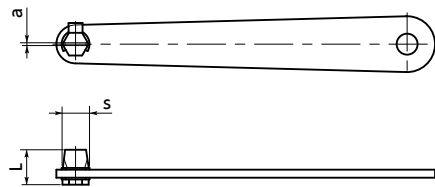
SKND For hex sockets



SKND-PH For cross-recessed sockets



SKND-SLOT For slotted grooves



- Thin screwdriver with a plate-shaped handle.
- Can be used in limited access spaces.
- Usable in spaces where regular screwdrivers/ wrenches cannot be used, it helps reduce work hours for removing peripheral components, etc.
- Required working space is decreased, so device/ equipment structure can also be made more compact.
- Pressing the handle with fingers helps prevent cam-out.
- There are 3 bit shape types.
 - SKND** ————— For hex sockets
 - SKND-PH** ————— For cross-recessed sockets
 - SKND-SLOT** ————— For slotted grooves

• Application

Attaching and removing screws in limited access spaces of equipment, devices, and vehicles

SKND For Hex Sockets

Part Number	B Nominal of Width Across Flats	L	H	Mass (g)	Qty per Pack
SKND-2.5	2.5	10	3.5	27	1
SKND-3	3	10	4.5	27	1
SKND-4	4	10	5	27	1
SKND-5	5	10	5	27	1

SKND-PH For Cross-Recessed Sockets

Part Number	Cross-Recessed Nominal Number	L	Mass (g)	Qty per Pack
SKND-PH0	0	14	26	1
SKND-PH1	1	10	26	1
SKND-PH2	2	10	26	1

SKND-SLOT For Slotted Grooves

Part Number	s Nominal Width for Slotted Grooves	L	a	Mass (g)	Qty per Pack
SKND-SLOT6	6	10	0.8	26	1

• Material/Finish

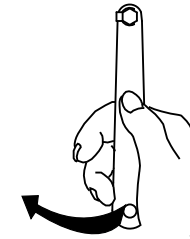
RoHS2 Compliant

	SKND
Handle	Carbon Steel Electroless Nickel Plating
Bit Retaining Bracket	Carbon Tool Steel Electroless Nickel Plating
Bit	Alloy Steel Electroless Nickel Plating*1

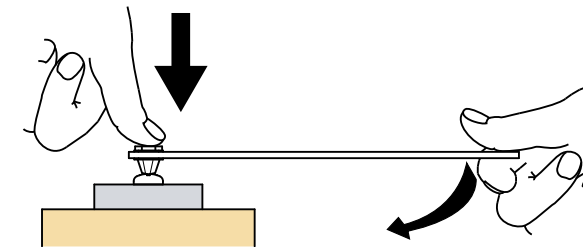
*1: **SKND-PH1**, **SKND-PH2**, and **SKND-SLOT6** are chrome plated.

• Usage

Take a firm grasp on the handle for use.



Stable work can be achieved when there is working space above the screw by pressing on the bit.



⚠ Precautions for Use

- Do not use for any applications other than for turning screws.
- Do not use in locations exposed to live wires, as it is made of metal.
- Use a bit that matches the recessed hole shape of the screw.
- Always observe the usage method on this page.

• Part number specification

SKND-2.5

◀1