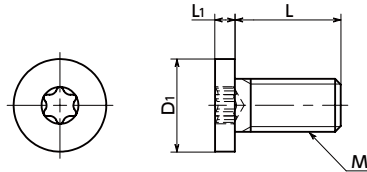


SPS-SH Plastic Screws - Hexalobular Socket Head Cap Screw with Ultra Low Head - PPS

Protrusion
 Heat-resistance
 Chemical-proof
 High Specific Strength



● Material/Finish



SPS-SH	
Main Body	PPS (Polyphenylene Sulfide) (Bright Light Brown) (Glass Fiber 40%)
Heat Resistance Temperature*1	200°C

*1: This is the value for the resin material. The operating temperature of the product changes with performance conditions such as tightening torque.

● Application

FPD production equipment / Semiconductor devices / Printed circuit board etching devices / Metallic surface treatment equipment and facilities / Chemical plants / Transformers / Electrical and electronic equipment / Hot water pumps / Chemical pumps

- PPS special low profile cap screw. All head heights are 1.5mm or less.
- PPS has excellent heat resistance and chemical resistance plus continuous use at 200°C. There are no fats or organic solvents capable of attacking PPS below 200°C.
- Retains high strength, rigidity and heat resistance.
- It also has high flame retardance which clears the UL 94 V-0 standard.
- The recess has a hexalobular*1 shape that can withstand high tightening torque.
- Install and remove with **SKX** Dedicated Wrench or **SKXB** Dedicated Bit and **SRD** Dedicated Magnetic Screwdriver together.
- Use the **SKX-N** hexalobular wrench for extremely limited access spaces for mounting and removing in tight spaces.
- For the properties and precautions of plastic screws, please refer to "Properties of Plastic Screws".

*1: The hexalobular shape is prescribed by JIS B 1015: 2008(ISO 10664: 2005)"Hexalobular internal driving feature for bolts and screws".

Unit : mm

Part Number	M (Coarse)		L								D1	L1	Applicable Wrench	Hexalobular Socket No.	Tension Rupture Load*1 (N)	Torsional Torque*1 (N·m)	Mass (g)	per Pack Qty	
	Nominal of Thread	Pitch	6	8	10	12	16	20	25	30									40
SPS-M3-SH	M3	0.5	6	8	10	12	16	20				6	1.3	SKX-8	8	396	0.21	0.098 - 0.23	10
SPS-M4-SH	M4	0.7	6	8	10	12	16	20	25			8	1.5	SKX-10	10	611	0.37	0.21 - 0.5	10
SPS-M5-SH	M5	0.8	8	10	12	16	20	25	30			9	1.5	SKX-15	15	911	0.74	0.34 - 0.9	10
SPS-M6-SH	M6	1			10	12	16	20	25	30	40	10	1.5	SKX-20	20	1177	1.13	0.5 - 1.59	10

*1: Values in chart are for reference only. They are not guaranteed values. The recommended tightening torque is 50% of the torsional torque.

● When purchasing less volume than one full bag, a separate handling fee is charged. For details, see the Sold Separately Service.

● Related Products

PPS hex nuts and washers **SPS-N** **SPS-W** are available.



SKX Hexalobular Wrench



SKX-N Hexalobular Wrench for Extremely Limited Access Spaces



SKXB Hexalobular Short Bit



SRD Magnet Screwdriver



● Part number specification

SPS - M5 - 30 - SH

Product Symbol **1** **2** Product Symbol

Individual Sales	Cleanroom Wash & Packaging	Screw Length Adjustment	Vibration Resistant	Modification process for captive use
Available / Add'l charge	Available / Add'l charge	Available / Add'l charge	Not Available	Not Available