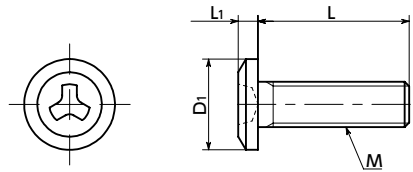


SRSHS Tamper Resistant Special Low Profile Cap Screws

WEB Selection Tool | WEB CAD Download | SUS Stainless steel | Tamper Resistance



• Material/Finish

RoHS2 Compliant

	SRSHS
Main unit	SUSXM7



- Tamper resistant screws with head height of 1.5mm or less.
- This prevents mounting and removing with regular tools. The low head height makes it difficult to remove the screws by grasping the head itself, making them excellent for theft prevention.
- After mounting these do not protrude by much, so they do not affect the appearance.
- Install and remove with **SRSHB** Dedicated Bits and **SRD** Dedicated Magnetic Screwdriver together.

• Application

Dismantling equipment/device, tamper-resistance/anti-theft measures for outdoor facility/ security measures/safety measures

Unit : mm

Part Number	M (Coarse)		L								D1	L1	Bit Part No.	Applicable Screwdriver	Mass (g)
	Nominal of Thread	Pitch	4	5	6	8	10	12	16	8					
SRSHS-M2	M2	0.4	4	5	6	8					3	0.6	SRSHB-0	SRD-6.35	0.089 - 0.16
SRSHS-M2.5	M2.5	0.45	4	5	6	8					3.8	0.8	SRSHB-1	SRD-6.35	0.15 - 0.28
SRSHS-M3	M3	0.5			6	8	10	12			6	1.3	SRSHB-2	SRD-6.35	0.44 - 0.69
SRSHS-M4	M4	0.7				8	10	12	16		8	1.5	SRSHB-3	SRD-6.35	1 - 1.6

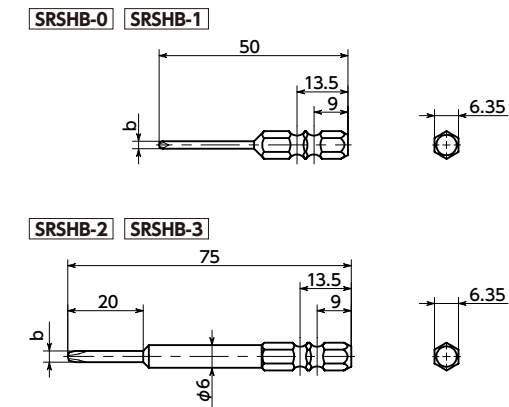
Part Number	Qty per Pack
SRSHS-M2	10
SRSHS-M2.5	10
SRSHS-M3	20
SRSHS-M4	20

• Also sold separately from 1 piece up. → P.xxxx

• **SRSHB** Dedicated bit (Supports V6.3/U6.3 insert shapes)

Unit : mm

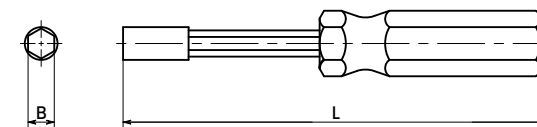
Part Number	b	Mass (g)	Qty per pack
SRSHB-0	2	6.4	1
SRSHB-1	2	6.4	1
SRSHB-2	3	13.8	1
SRSHB-3	4	14.7	1



• **SRD** Dedicated magnet screwdriver

Unit : mm

Part Number	L	B	Mass (g)	Qty per pack
SRD-6.35	210	6.35	98	1



• Part number specification

SRSHS-M3 - 10

Place order by a bag.
Also sold separately from 1 piece up. → P.xxxx

Individual Sales → P.xxxx | Cleanroom Wash & Packaging → P.xxxx | Screw Length Adjustment → P.xxxx | Vibration Resistant → P.xxxx | Modification process for captive use → P.xxxx
Available / Add'l charge | Please feel free to contact us | Male screw only/ Add'l charge | Available / Add'l charge | Available / Add'l charge