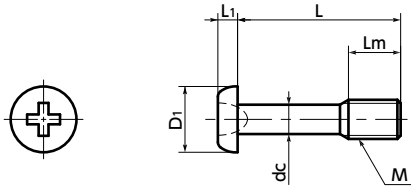


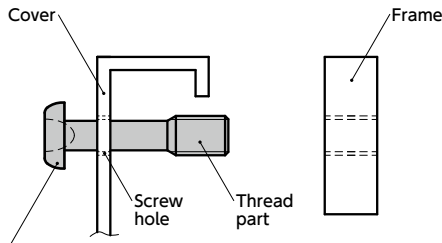
SSCZS Pan head captive machine screws for precision instruments (miniature screws)



WEB Selection Tool
 WEB CAD Download
 Protrusion
 Miniature Size
 SUS Stainless steel



- Installation example
Make a screw hole in the cover, then pass **SSCZS** thread through it. Even when the screw is removed from the frame, **SSCZS** does not fall out from the cover because **SSCZS** thread catches on the screw hole of the cover.



SSCZS Pan head captive machine screws for precision instruments

⚠ Precautions for Use

- Screw hole inner diameter on the cover side shall be at least the dc dimension.
- The cover thickness should be 0.3 mm or above.

- For locations within precision instruments requiring frequent mounting and removal.
- M1.4 - M2.6. Pan Head Machine Screws for Precision Instruments.
- For CE Marking compatibility. ➔ P.xxxx

● Application

Fixing of protective covers/inspection jigs within precision instruments / CE marking compatible compact precision instruments and electric/electronic devices

● Material/Finish

RoHS2 Compliant

| | |
|-----------|------------------------------|
| | SSCZS |
| Main Body | SUSXM7(Equivalent to SUS304) |

Unit : mm

| Part Number | M (Coarse) | | L | | | | Lm | D1 | L1 | dc | Max. Torque(N·m) | Mass (g) |
|-------------------|-------------------|-------|---|---|---|---|-----|-----|-----|-----------------------------------|------------------|-------------|
| | Nominal of Thread | Pitch | 4 | 5 | 6 | 8 | | | | | | |
| SSCZS-M1.4 | M1.4 | 0.3 | 4 | 5 | 6 | 8 | 2 | 2 | 0.5 | 1.0 ⁰ _{-0.1} | 0.03 | 0.04 - 0.06 |
| SSCZS-M1.6 | M1.6 | 0.35 | 4 | 5 | 6 | 8 | 2 | 2.3 | 0.5 | 1.1 ⁰ _{-0.1} | 0.04 | 0.05 - 0.08 |
| SSCZS-M1.7 | M1.7 | 0.35 | 4 | 5 | 6 | 8 | 2 | 2.5 | 0.5 | 1.2 ⁰ _{-0.1} | 0.04 | 0.06 - 0.08 |
| SSCZS-M2 | M2 | 0.4 | 4 | 5 | 6 | 8 | 2.5 | 3 | 0.6 | 1.4 ⁰ _{-0.15} | 0.09 | 0.09 - 0.13 |
| SSCZS-M2.5 | M2.5 | 0.45 | | | 6 | 8 | 10 | 3 | 0.8 | 1.8 ⁰ _{-0.15} | 0.15 | 0.21 - 0.25 |
| SSCZS-M2.6 | M2.6 | 0.45 | | | 6 | 8 | 10 | 3 | 0.8 | 1.8 ⁰ _{-0.15} | 0.16 | 0.22 - 0.26 |

| Part Number | Qty per pack |
|-------------------|--------------|
| SSCZS-M1.4 | 1 |
| SSCZS-M1.6 | 1 |
| SSCZS-M1.7 | 1 |
| SSCZS-M2 | 1 |
| SSCZS-M2.5 | 1 |
| SSCZS-M2.6 | 1 |

● Part number specification

SSCZS-M1.4-4



| | | | | |
|---------------------------|-------------------------------------|----------------------------------|------------------------------|---|
| Individual Sales ➔ P.xxxx | Cleanroom Wash & Packaging ➔ P.xxxx | Screw Length Adjustment ➔ P.xxxx | Vibration Resistant ➔ P.xxxx | Modification process for captive use ➔ P.xxxx |
| 1 unit in 1 bag | Available / Add'l charge | Not Available | Not Available | with Captive Processing |