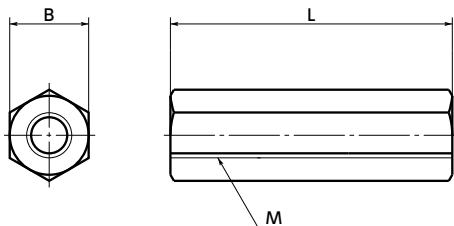




SPE-HB Plastic Screws - Hex Posts - PEEK NEW

Selection Tool
 CAD Download
 Chemical-proof



● Application

FPD production equipment / Semiconductor devices / Printed circuit board etching devices / Metallic surface treatment equipment and facilities / Chemical plants / Transformers / Electrical and electronic equipment / Hot water pumps / Chemical pumps

● Material/Finish



	SPE-HB
Main Body	PEEK (Polyether Ether Ketone) (Light Brown)
Heat Resistance Temperature*1	180°C

*1: This is the value for the resin material. The operating temperature of the product changes with performance conditions such as tightening torque.

- PEEK is a thermoplastic super engineering plastic superior in physical and chemical properties.
- Excellent chemical resistance. It remains almost unaffected by chemicals other than concentrated sulfuric acid, concentrated nitric acid, and concentrated hydrofluoric acid.
- With excellent heat resistance and water resistance, it retains strength at high temperatures.
- It features outstanding resistance to wear, shock, and fatigue.
- It also has high flame retardance which clears the UL 94 V-0 standard.
- The properties and precautions of plastic screws
➔ P.xxxx

Unit : mm

Part Number	M (Coarse)	L										B	Mass (g)	
	1	2												
SPE-M3-HB	M3	4	5	6	8	10	12						6	0.14 - 0.41
SPE-M4-HB	M4		5	6	8	10	12	15					7	0.22 - 0.66
SPE-M5-HB	M5			6	8	10	12	15	18	20			8	0.32 - 1.1
SPE-M6-HB	M6							15	18	20			10	1.2 - 1.6
SPE-M8-HB	M8									20	25	30	13	2.6 - 3.9

Part Number	Qty*1 per Pack
SPE-M3-HB	5
SPE-M4-HB	5
SPE-M5-HB	5
SPE-M6-HB	5
SPE-M8-HB	5

*1: Also sold separately from 1 piece up. ➔ P.xxxx

● Part number specification

SPE - M3 - 4 - HB

Product Code **1** Product Code **2**

Order in number of packs.

Also sold separately from 1 piece up. ➔ P.xxxx

Individual Sales ➔ P.xxxx	Cleanroom Wash & Packaging ➔ P.xxxx	Screw Length Adjustment ➔ P.xxxx	Vibration Resistant ➔ P.xxxx	Modification process for captive use ➔ P.xxxx
Available / Add'l charge	Available / Add'l charge	Not Available	Not Available	Not Available