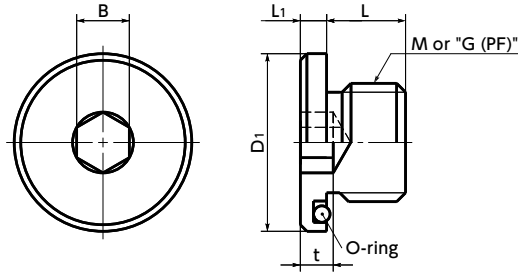


**SFM/SFMS** Hex Socket Flange Head Screw Plugs *Additional Size*

WEB Selection Tool   WEB CAD Download   **SUS** Stainless steel



- Because an O-ring is included, grooving is not required on the surface surrounding the female screw.
- Because this is a parallel thread, strain on the female screw like a tightened taper thread does not occur. It is suitable for hydraulic equipment/pneumatic devices that are often mounted and removed.
- For the stainless steel **SFMS**, metric screw threads and parallel pipe threads are standardized.
- Application

Hydraulic equipment / Pneumatic machinery and equipment / General industrial machines

• Material/Finish ✔ RoHS2 Compliant

	SFM	SFMS
Main Body	SCM435 (Hardness: 32 - 42 HRC) Ferrosoferric Oxide Film (Black)	SUS304
O-Ring	Nitrile Rubber (Type 1 B of JIS B 2401)	Fluoro-rubber (Type 4 D of JIS B 2401)

**SFM** Main Body: Made of Steel / O-ring: Nitrile Rubber

Unit : mm

Part Number	M (Fine)		L	D1	L1	B	t	O-Ring No.	Recommended Tightening Torque (N·m)	Mass (g)	per Pack Qty
	Nominal of Thread	Pitch									
<b>SFM-M8</b>	M8	1	7	16	4	5	3.5	P10	15.7	4	1
<b>SFM-M10</b>	M10	1	8	19.5	4	5	4	P12.5	19.6	7	1
<b>SFM-M12</b>	M12	1.5	12	21	4	6	5	P14	27.5	14	1
<b>SFM-M14</b>	M14	1.5	12	23	4	6	5	P16	39.2	19	1
<b>SFM-M16</b>	M16	1.5	12	25	4	8	6	P18	63.7	25	1
<b>SFM-M18</b>	M18	1.5	12	27	4	8	6	P20	78.5	32	1
<b>SFM-M20</b>	M20	1.5	14	32.5	5	10	6.5	P22.4	113	47	1
<b>SFM-M22</b>	M22	1.5	14	35	5	10	6.5	P25	137	57	1
<b>SFM-M24</b>	M24	1.5	14	38	5	12	7.5	P28	201	68	1
<b>SFM-M27</b>	M27	2	16	40	5	12	7.5	P30	245	94	1

**SFMS** Main Body: Made of Stainless Steel / O-ring: Fluoro-rubber and Metric Screw Threads

Unit : mm

Part Number	M (Fine)		L	D1	L1	B	t	O-Ring No.	Recommended Tightening Torque (N·m)	Mass (g)	per Pack Qty
	Nominal of Thread	Pitch									
<b>SFMS-M5</b>	M5	0.8	6.5	12	3.5	2.5	2	P7	3	3.1	1
<b>SFMS-M6</b>	M6	1	7	13	3.5	3	2.5	P8	5	3.6	1
<b>SFMS-M8</b>	M8	1	7	16	4	5	3.5	P10	10.9	6.6	1
<b>SFMS-M8-CS</b>	M8	1.25	8	16	4	4	3.5	P10	10.9	7.1	1
<b>SFMS-M10</b>	M10	1	8	19.5	4	5	4	P12.5	13.7	11	1
<b>SFMS-M10-CS</b>	M10	1.5	9	19.5	4	4	4	P12.5	13.7	11	1
<b>SFMS-M12</b>	M12	1.5	12	21	4	6	5	P14	19.2	16	1
<b>SFMS-M14</b>	M14	1.5	12	23	4	6	5	P16	27.4	21	1
<b>SFMS-M16</b>	M16	1.5	12	25	4	8	6	P18	44.5	25	1
<b>SFMS-M18</b>	M18	1.5	12	27	4	8	6	P20	54.9	32	1
<b>SFMS-M20</b>	M20	1.5	14	32.5	5	10	6.5	P22.4	78.9	50	1
<b>SFMS-M22</b>	M22	1.5	14	35	5	10	6.5	P25	96.1	61	1
<b>SFMS-M24</b>	M24	1.5	14	38	5	12	7.5	P28	141	68	1
<b>SFMS-M27</b>	M27	2	16	40	5	12	7.5	P30	172	94	1

- Part number specification

**SFMS-M10**



Individual Sales → P.0000  
 Cleanroom Wash & Packaging → P.0000  
 Screw Length Adjustment → P.0000  
 Vibration Resistant → P.0000  
 Modification process for captive use → P.0000  
 1 pc. in 1 bag   S.S. only/ Add'l charge   Not Available   Not Available   Not Available

**SFMS** Main Body: Made of Stainless Steel / O-ring: Fluoro-rubber and Parallel Pipe Threads

Unit : mm

Part Number	G (PF)	L	D1	L1	B	t	O-Ring No.	Recommended Tightening Torque (N·m)	Mass (g)	per Pack Qty
	Nominal of Thread									
<b>SFMS-1</b>	G1/8	8	19.5	4	5	4	P12.5	13.3	10	1
<b>SFMS-2</b>	G1/4	12	23	4	6	5	P16	25.7	19	1
<b>SFMS-3</b>	G3/8	12	27	4	8	6	P20	50.8	28	1
<b>SFMS-4</b>	G1/2	14	35	5	10	6.5	P25	91.5	56	1