
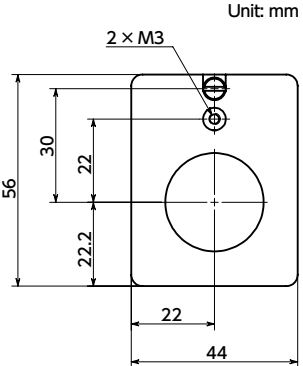
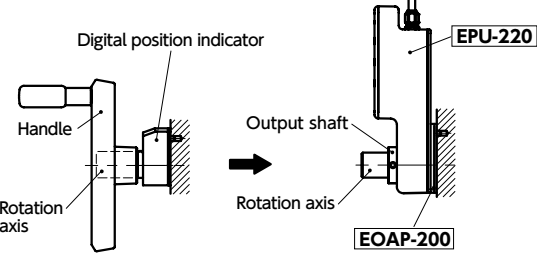



● Material/Finish

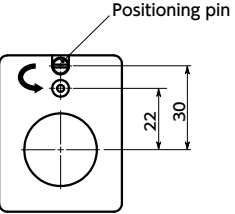
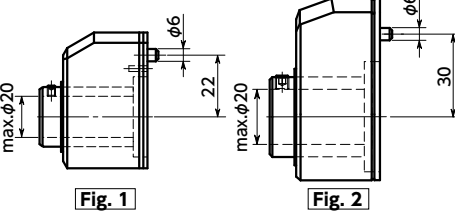
	EOAP-200
Plate	Aluminum Alloy Barrel Polishing
Positioning Pin	Aluminum Alloy
Cushioning Foam	Polyethylene
Part Number 	Mass (g)
EOAP-200	16



- **EPU-210** (→ P.xxxx) **EPU-220** (→ P.xxxx) dedicated mounting plate.
- If replacing the digital position indicator and handle attached to a machine with **EPU-210** or **EPU-220**, use the positioning pin hole for the digital position indicator of the machine as-is to mount **EPU-210** or **EPU-220**.

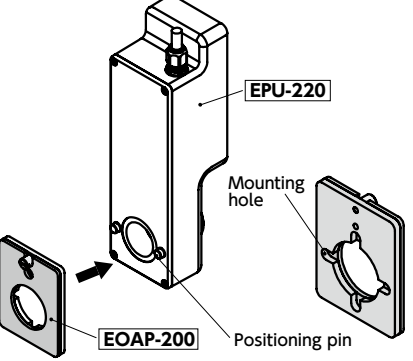


 **Precautions for Use**
EOAP-200 is used when replacing digital position indicators with sizes as per **Fig. 1** or **Fig. 2**. When shipped, the position of the **EOAP-200** positioning pin is matched for sizes of **Fig. 2**. When replacing digital position indicators with sizes as per **Fig. 1**, rotate the positioning pin anti-clockwise with a flathead screwdriver and remove it, then change its position. (Recommended tightening torque: 0.3 N·m)

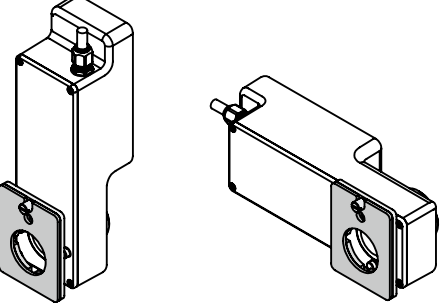


● Mounting

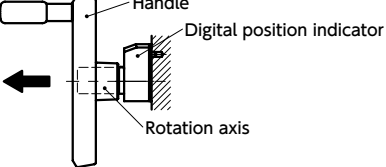
- ① Mount by aligning the **EPU-210** **EPU-220** positioning pins and the **EOAP-200** mounting holes.



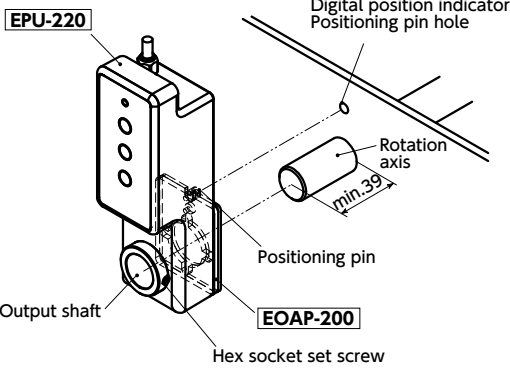
Can be mounted in each 90° orientation.
Mount in a position such that **EPU-210** **EPU-220** does not interfere with machinery.



- ② Remove the digital position indicator and handle from the rotation axis.



- ③ With **EOAP-200** mounted to **EPU-210** **EPU-220**, put the rotation axis through the output shaft and secure with the hex socket set screws supplied with **EPU-210** **EPU-220**. (Recommended tightening torque: 2.8 N·m)



● Part number specification

EOAP-200



Available Area : Japan, the US, Canada, Mexico, China, Taiwan, South Korea, and Europe