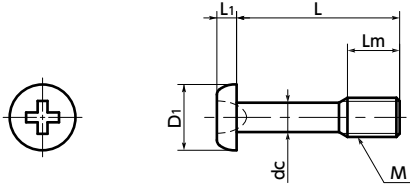


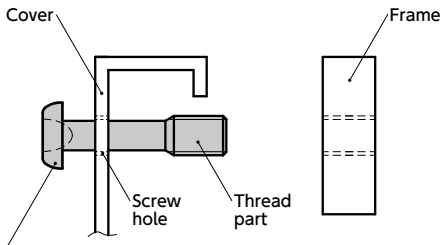
# SSCZS Pan head captive machine screws for precision instruments (miniature screws)



WEB Selection Tool  
 WEB CAD Download  
 Protrusion  
 Miniature Size  
 SUS Stainless steel



- Installation example  
Make a screw hole in the cover, then pass **SSCZS** thread through it. Even when the screw is removed from the frame, **SSCZS** does not fall out from the cover because **SSCZS** thread catches on the screw hole of the cover.



**SSCZS** Pan head captive machine screws for precision instruments

**⚠ Precautions for Use**

- Screw hole inner diameter on the cover side shall be at least the dc dimension.
- The cover thickness should be 0.3 mm or above.

- For locations within precision instruments requiring frequent mounting and removal.
- M1.4 - M2.6. Pan Head Machine Screws for Precision Instruments.
- For CE Marking compatibility. ➔ P.xxxx

● Application

Fixing of protective covers/inspection jigs within precision instruments / CE marking compatible compact precision instruments and electric/electronic devices

● Material/Finish

RoHS2 Compliant

	<b>SSCZS</b>
Main Body	SUSXM7(Equivalent to SUS304)

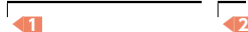
Unit : mm

Part Number	M	L					Lm	D1	L1	dc	Max. Torque(N·m)	Mass (g)
<b>SSCZS-M1.4</b>	M1.4	4	5	6	8	2	2	0.5	1.0 <sup>0</sup> <sub>-0.1</sub>	0.03	0.04 - 0.06	
<b>SSCZS-M1.6</b>	M1.6	4	5	6	8	2	2.3	0.5	1.1 <sup>0</sup> <sub>-0.1</sub>	0.04	0.05 - 0.08	
<b>SSCZS-M1.7</b>	M1.7	4	5	6	8	2	2.5	0.5	1.2 <sup>0</sup> <sub>-0.1</sub>	0.04	0.06 - 0.08	
<b>SSCZS-M2</b>	M2	4	5	6	8	2.5	3	0.6	1.4 <sup>0</sup> <sub>-0.15</sub>	0.09	0.09 - 0.13	
<b>SSCZS-M2.5</b>	M2.5			6	8	10	3	3.8	1.8 <sup>0</sup> <sub>-0.15</sub>	0.15	0.21 - 0.25	
<b>SSCZS-M2.6</b>	M2.6			6	8	10	3	4	1.8 <sup>0</sup> <sub>-0.15</sub>	0.16	0.22 - 0.26	

Part Number	Qty per pack
<b>SSCZS-M1.4</b>	1
<b>SSCZS-M1.6</b>	1
<b>SSCZS-M1.7</b>	1
<b>SSCZS-M2</b>	1
<b>SSCZS-M2.5</b>	1
<b>SSCZS-M2.6</b>	1

● Part number specification

## SSCZS-M1.4-4



Individual Sales ➔ P.xxxx	Cleanroom Wash & Packaging ➔ P.xxxx	Screw Length Adjustment ➔ P.xxxx	Vibration Resistant ➔ P.xxxx	Modification process for captive use ➔ P.xxxx
1 unit in 1 bag	Available / Add'l charge	Not Available	Not Available	with Captive Processing