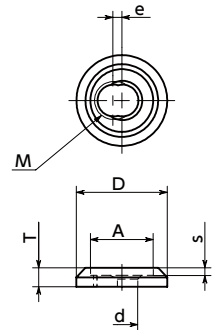
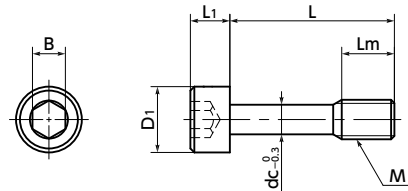


LYSC-N



SSC

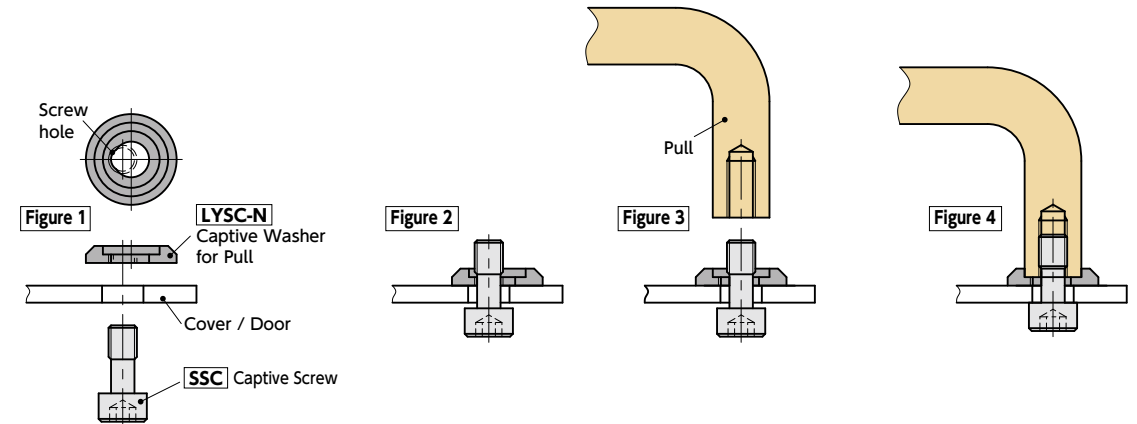


- With a pull mounted on it, the pull mounting surface is beautifully decorated while falling of screws within the enclosure is prevented.
- No additional modification of cover or door is required to mount the pull.
- For applications such as food machinery, packing machinery and chemical manufacturing devices that require countermeasures against parts falling.
- A captive screw for mounting **SSC** is supplied.

• Material/Finish RoHS2 Compliant

	LYSC-N-SSC
Captive Washer for Pulls LYSC-N	SUS304 Barrel Polishing
Captive Screw SSC	SUSXM7 (Equivalent to SUS304)

- Mounting method
 - ① Let the supplied captive screw **SSC** through the cover and door and tighten it into the screw hole located in the position eccentric from the center of the captive washer for the pull **LYSC-N** from the pull mounting surface until the cylindrical part of **SSC** is penetrated **Figure 2**.
 - ② Move **SSC** to the drilled hole at the center of **LYSC-N** **Figure 3**.
 - ③ In the state indicated in **Figure 3**, tighten **SSC** to mount the pull **Figure 4**.
 - ④ After mounting, the pull screw hole and **SSC** are retained at the center of **LYSC-N**. At this point, the drilled hole at the center of **LYSC-N** is smaller than the screw part of **SSC**, so **SSC** never comes out of the drilled hole and falling is prevented.



• Applicable Pulls

Part Number	Applicable Pulls			UGF →P.xxxx	TG →P.xxxx
	UNF	UNFS	UNFA		
LYSC-12-N-SSC					TG-108 TG-128
LYSC-16A-N-SSC	All Sizes			All Sizes	TG-110 TG-130

• Related Products

The captive washer for a pull can be purchased alone.

LYSC-N → P.xxxx



• Part number specification

LYSC-12-N-SSC-M5-12



Cleanroom Wash & Packaging → P.xxxx

Available / Add'l charge

Laser Marking → P.xxxx

Not Available