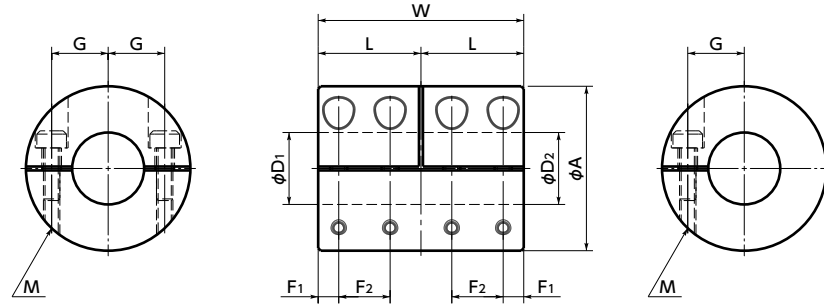


MLR-V/MLRS-V Rigid Couplings - Semi-split Type

Zero Backlash High Rigidity SUS Stainless steel

MLR-V Made of aluminum alloy
MLRS-V Made of all stainless steel



Dimensions

Unit : mm

Part Number	A	L	W	F1	F2	G	M	Screw Tightening Torque (N·m)	Standard Bore Diameter D1-D2
MLR-16V	16	11	22	2.5	5.5	5	M2	0.5	6 - 6
MLR-20V	20	12	24	2.5	6	7	M2	0.5	8 - 8
MLR-25V	25	18	36	4.5	9	9	M2.5	1	10 - 10 12 - 12
MLR-32V	32	20	40	4	10	11	M3	1.5	14 - 14 15 - 15
MLRS-16V	16	11	22	2.5	5.5	5	M2	0.5	6 - 6
MLRS-20V	20	12	24	2.5	6	7	M2	0.5	8 - 8
MLRS-25V	25	18	36	4.5	9	9	M2.5	1	10 - 10 12 - 12
MLRS-32V	32	20	40	4	10	11	M3	1.5	14 - 14 15 - 15

- All products are provided with hex socket head cap screw.
- Recommended tolerance for shaft diameters is h6 and h7.
- In case of mounting on D-cut shaft, be careful about the position of the D-cut surface of the shaft.
- For the shaft insertion amount to the coupling, see Mounting/maintenance.

Performance

Part Number	Max. Bore Diameter (mm)	Rated Torque *1 (N·m)	Max. Rotational Frequency (min ⁻¹)	Moment of Inertia *2 (kg·m ²)	Mass *2 (g)
MLR-16V	6	1	39000	3.5×10 ⁻⁷	10
MLR-20V	8	2.5	31000	9.5×10 ⁻⁷	18
MLR-25V	12	4.5	25000	3.4×10 ⁻⁶	38
MLR-32V	15	10	19000	1.0×10 ⁻⁵	70
MLRS-16V	6	0.3	39000	9.1×10 ⁻⁷	25
MLRS-20V	8	0.5	31000	2.6×10 ⁻⁶	45
MLRS-25V	12	1	25000	9.3×10 ⁻⁶	100
MLRS-32V	15	2	19000	2.8×10 ⁻⁵	180

- *1 : Correction of rated torque due to load fluctuation is not required.
- *2 : These are values with max. bore diameter.

Additional Keyway at Shaft Hole → P. xxxx Cleanroom Wash & Packaging → P. xxxx SUS Change to Stainless Steel Screw → P. xxxx
 Please feel free to contact us Please feel free to contact us Please feel free to contact us

- Part number specification

MLRS-20V - 8-8

