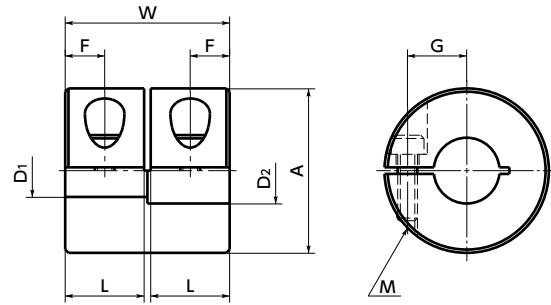


# MRG-C / MRGS-C Rigid Couplings - Clamping Type

[WEB Selection Tool](#)
[WEB CAD Download](#)
[Zero Backlash](#)
[High torque](#)
[High Rigidity](#)
[SUS Stainless steel](#)

**MRG-C** Made of aluminum alloy  
**MRGS-C** Made of all stainless steel



## Dimensions • Performance

Unit : mm

Part Number	A	W	L	F	G	M	Screw Tightening Torque (N·m)	Standard Bore Diameter																	
								D1/D2	5	6	8	10	12	14	15	16	18	19	20	25	28	30			
MRG-16C	16	16	7.5	3.75	5	M2.5	1	●	●																
MRG-20C	20	20	9.5	4.75	6.5	M2.5	1		●	●															
MRG-25C	25	25	12	6	9	M3	1.5			●	●														
MRG-32C	32	32	15.5	7.75	11	M4	2.5				●	●	●												
MRG-40C	40	40	19.5	9.5	14	M5	4							●	●	●									
MRG-50C	50	50	24.25	12	18	M6	8										●	●							
MRG-65C	65	65	31.5	16	23	M8	16												●	●	●				
MRGS-16C	16	16	7.5	3.75	5	M2.5	1		●	●															
MRGS-20C	20	20	9.5	4.75	6.5	M2.5	1			●	●														
MRGS-25C	25	25	12	6	9	M3	1.5				●	●													
MRGS-32C	32	32	15.5	7.75	11	M4	2.5					●	●	●											
MRGS-40C	40	40	19.5	9.5	14	M5	4								●	●	●								
MRGS-50C	50	50	24.25	12	18	M6	8											●	●						
MRGS-65C	65	65	31.5	16	23	M8	16													●	●	●			

- All products are provided with hex socket head cap screw.
- Recommended tolerance for shaft diameters is h6 and h7.

### ⚠ Precautions for Use

- In case of mounting on D-cut shaft, be careful about the position of the D-cut surface of the shaft. → P.xxxx
- There are sizes where the hex socket head bolt exceeds the outer diameter of the coupling and the rotating diameter is larger than the outer diameter. Please be careful of the interference of coupling. → P.xxxx

## Performance

Part Number	Max. Bore Diameter (mm)	Rated Torque *1 (N·m)	Max. Rotational Frequency (min <sup>-1</sup> )	Moment of Inertia *2 (kg·m <sup>2</sup> )	Mass *2 (g)
MRG-16C	6	1	39000	3.0×10 <sup>-7</sup>	8.3
MRG-20C	8	2.5	31000	8.7×10 <sup>-7</sup>	15
MRG-25C	10	4.5	25000	2.7×10 <sup>-6</sup>	29
MRG-32C	14	10	19000	7.1×10 <sup>-6</sup>	51
MRG-40C	18	20	15000	2.4×10 <sup>-5</sup>	104
MRG-50C	24	25	12000	7.5×10 <sup>-5</sup>	197
MRG-65C	30	35	9000	2.8×10 <sup>-4</sup>	446
MRGS-16C	6	0.3	39000	8.0×10 <sup>-7</sup>	22
MRGS-20C	8	0.5	31000	2.4×10 <sup>-6</sup>	41
MRGS-25C	10	1	25000	7.3×10 <sup>-6</sup>	80
MRGS-32C	14	2	19000	2.5×10 <sup>-5</sup>	160
MRGS-40C	18	3	15000	7.0×10 <sup>-5</sup>	297
MRGS-50C	24	4.5	12000	2.1×10 <sup>-4</sup>	563
MRGS-65C	30	7	9000	8.1×10 <sup>-4</sup>	1270

\*1 : Correction of rated torque due to load fluctuation is not required.  
 \*2 : These are values with max. bore diameter.

[Additional Keyway at Shaft Hole](#) → P.xxxx   
 [Cleanroom Wash & Packaging](#) → P.xxxx   
 [Change to Stainless Steel Screw](#) → P.xxxx  
 Available / Add'l charge    Please feel free to contact us    Please feel free to contact us

• Part number specification

## MRG-32C-12-14

