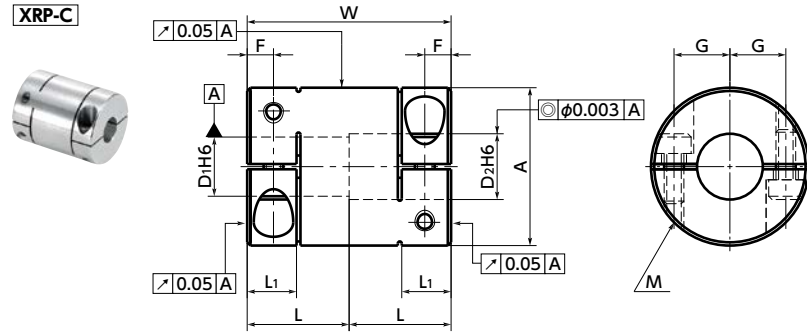


XRP Rigid Couplings - Clamping Type

WEB Selection Tool WEB CAD Download Zero Backlash High Rigidity



Dimensions

Unit : mm

Part Number ¹	A	L	L1	W	F	G	M	Screw Tightening Torque (N·m)
XRP-16C	16	10	5	20	2.6	5	M2	0.5
XRP-19C	19	13	6.5	26	3.5	6.25	M2.5	1
XRP-24C	24	15	7	30	3.75	7.75	M3	1.5
XRP-34C	34	20	8	40	4	12	M3	1.5
XRP-39C	39	24	10	48	5	14.5	M4	2.5

Part Number	Standard Bore Diameter D1/D2 ²		
XRP-16C	5 - 5	5 - 6	6 - 6
XRP-19C	6 - 6	6 - 8	8 - 8
XRP-24C	8 - 8	8 - 10	10 - 10
XRP-34C	10 - 10	10 - 12	12 - 12
XRP-39C	12 - 12	12 - 14	15 - 15

- All products are provided with hex socket head cap screw.
- Recommended tolerance for shaft diameters is h6.

⚠ Precautions for Use

- In case of mounting on D-cut shaft, be careful about the position of the D-cut surface of the shaft. → P.xxxx
- There are sizes where the hex socket head bolt exceeds the outer diameter of the coupling and the rotating diameter is larger than the outer diameter. Please be careful of the interference of coupling. → P.xxxx

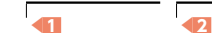
Performance

Part Number	Max. Bore Diameter (mm)	Rated Torque *1 (N·m)	Max. Rotational Frequency (min ⁻¹)	Moment of Inertia *2 (kg·m ²)	Mass *2 (g)
XRP-16C	6	1	39000	3.1×10 ⁻⁷	9
XRP-19C	8	2.5	33000	8.0×10 ⁻⁷	15
XRP-24C	10	4.5	26000	2.7×10 ⁻⁶	32
XRP-34C	15	7.5	18000	1.4×10 ⁻⁵	87
XRP-39C	18	10	16000	3.9×10 ⁻⁵	140

*1 : Correction of rated torque due to load fluctuation is not required.
 *2 : These are values with max. bore diameter.

- Part number specification

XRP-24C-8-10



Additional Keyway at Shaft Hole → P.xxxx Cleanroom Wash & Packaging → P.xxxx Change to Stainless Steel Screw → P.xxxx
 Please feel free to contact us Please combine with Stainless Steel Screw Alteration Service Available / Add'l charge