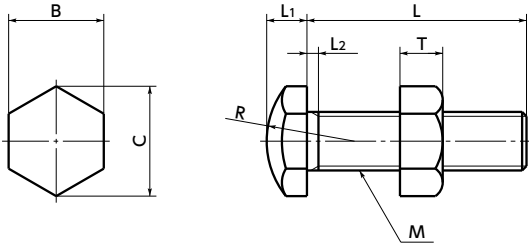


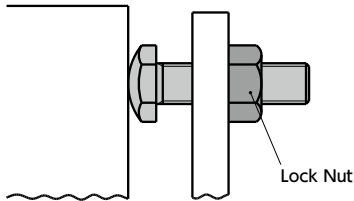
SSB-B / SSBS-B Stopper Bolts - Head Sphere Type *Recommendation*



WEB Selection Tool | WEB CAD Download | SUS Stainless steel



- Usage example
Use the lock nut on an opposite side of the side that receives the force.



- Hexagon head is round.
- Round part has already been quenched. It is highly abrasion-resistant.
- All products are provided with lock nut.
- Material/Finish ● RoHS2 Compliant

	SSB-B Made of Steel	SSBS-B Made of Stainless Steel
Thread Part	Equivalent to S45C Sphere Part Quenching (Hardness: 45 HRC or Above) Ferrosferic Oxide Film (Black)	SUS410 Nitriding Treatment (Hardness: 40 HRC or Higher)
Nut	SS400 Trivalent Chromate Treatment	SUS304

Dimensions

Unit : mm

Part Number Steel	Part Number Stainless steel	M (Coarse)		L ₂	T	R	L ₁	B	C	Mass (g)
		Nominal of Thread ❶	Pitch							
SSB-M3-B		M3	0.5	1.5	2.4	6	2	5.5	6.4	1 - 2
SSB-M4-B		M4	0.7	2.1	3.2	8	2.8	7	8.1	2.3 - 5.2
SSB-M5-B		M5	0.8	2.4	4	8	3.5	8	9.2	3.7 - 9.7
SSB-M6-B	SSBS-M6-B	M6	1	3	5	10	4	10	11.5	7.2 - 15
SSB-M8-B	SSBS-M8-B	M8	1.25	3.7	6.5	12	5.5	13	15	15 - 40
SSB-M10-B		M10	1.5	4.5	8	16	7	17	19.6	38 - 63
SSB-M12-B		M12	1.75	5.2	10	20	8	19	21.9	54 - 99
SSB-M16-B		M16	2	6	13	25	10	24	27.7	108 - 155

SSB-B Made of Steel | **SSBS-B** Made of Stainless Steel

Part Number	L (mm) ❷										
	10	15	20	25	30	35	40	50	60	70	80
SSB-M3-B	●	●	●	●	●						
SSB-M4-B	●	●	●	●	●	●	●				
SSB-M5-B	●	●	●	●	●	●	●	●			
SSB-M6-B		●	●	●	●	●	●	●			
SSB-M8-B		●	●	●	●	●	●	●	●		
SSB-M10-B					●	●	●	●	●	●	
SSB-M12-B					●	●	●	●	●	●	●
SSB-M16-B								●	●	●	●
SSBS-M6-B					●		●	●			
SSBS-M8-B					●		●	●			

● Related Products

The stop pin with excellent abrasion resistance **SPM** is available for the stopper bolt recipient.

➔ P.xxxx



- Part number specification

SSB-M10-30-B

Product Code ❶ ❷ Head Sphere Type

Cleanroom Wash & Packaging ➔ P.xxxx | Screw Combination ➔ P.xxxx | Screw Length Adjustment ➔ P.xxxx | Vibration Resistant ➔ P.xxxx

Please feel free to contact us

Not Available

Available / Add'l charge

Available / Add'l charge