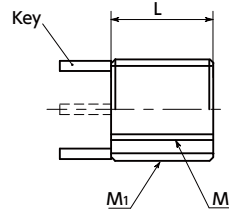


SHINS/SKK Key locking threaded insert for thread reinforcement **NEW**

WEB Selection Tool | WEB CAD Download | SUS Stainless steel | Non-Magnetic | High strength | Easy operation



● Coil-type inserts and special surface treatment specifications are also available. Please contact our customer service.



● Application

Reinforcement/repair of female threading
Equipment and device structures / General industrial machines

- A keyed female-thread reinforcing insert.
- The key mechanically locks the rotation so there is no risk of it falling out.
- With high strength compared to coil-type inserts, it is usable for firm fastening or in areas where bolts are frequently fastened and removed.
- It is ideal for reinforcing female threading in light metals such as aluminum, castings, resin etc., as well as for repairing damaged female threading.
- Mounting is even easier than with coil-type inserts. Use the dedicated tool **SKK**.

● Material/Finish



	SHINS
Main Body	SUS303
Key	SUS302

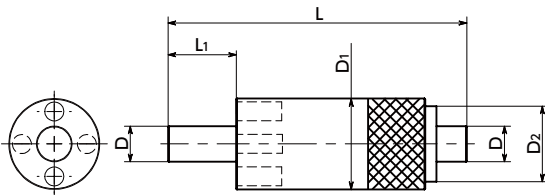
Unit : mm

Part Number	M		M1		L	Key Quantity	Dedicated Mounting Tool	Removal	Mass (g)	Qty per pack
	Nominal of Thread	Pitch	Nominal of Thread	Pitch						
SHINS-M4-M8	M4	0.7	Coarse M4	0.7	Coarse	8 2	SKK-45	5.5	4 1.8	1
SHINS-M5-M8	M5	0.8	Coarse M5	0.8	Coarse	8 2	SKK-45	5.5	4 1.4	1
SHINS-M6-M10	M6	1	Coarse M6	1	Fine	10 2	SKK-6	7.5	5 3.1	1
SHINS-M8-M12	M8	1.25	Coarse M8	1.25	Fine	12 4	SKK-8	9.5	5 4.8	1
SHINS-M10-M14	M10	1.5	Coarse M10	1.5	Fine	14 4	SKK-10	11.5	5 6.7	1
SHINS-M12-M16	M12	1.75	Coarse M12	1.75	Fine	16 4	SKK-12	13.5	5 8.9	1

● Dedicated Mounting Tool

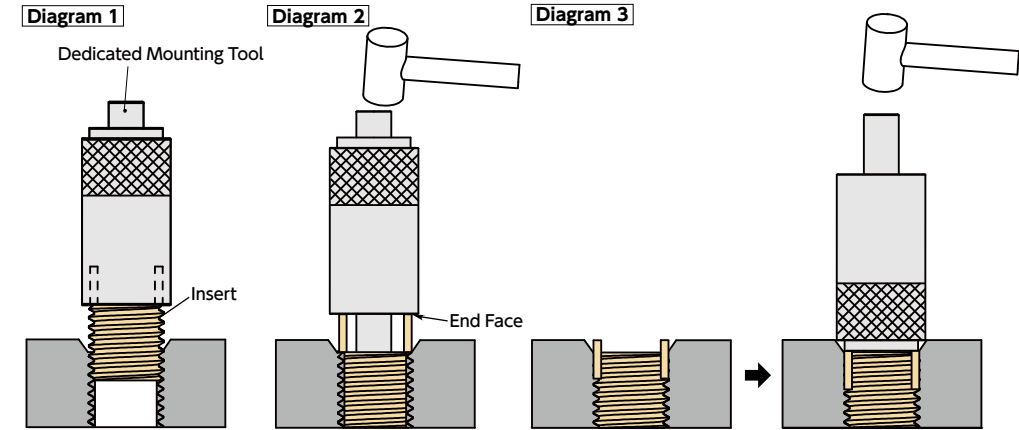
Unit : mm

Part Number	Applicable Insert	D	D1	D2	L	L1	Mass(g)	Qty per pack
SKK-45	SHINS-M4 - M8 SHINS-M5 - M8	3	12	8	35.5	6	23	1
SKK-6	SHINS-M6 - M10	4.7	12	10	39.5	9	25	1
SKK-8	SHINS-M8 - M12	6.3	15	12	42	10	39	1
SKK-10	SHINS-M10 - M14	8.1	16	14	42	10	47	1
SKK-12	SHINS-M12 - M16	9.9	20	16	46	12	75	1



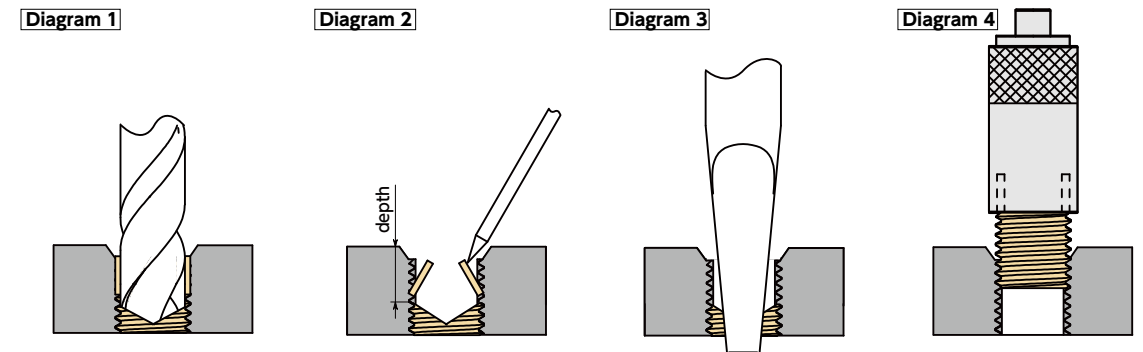
● Mounting

- ① Set the key in the dedicated mounting tool hole, and screw the insert into the female thread. **Diagram 1**
- ② Remove the key from the dedicated tool hole. With the key in contact with the dedicated tool end face, drive in the key using a hand press or hammer. **Diagram 2**
- ③ When projection of the key is a concern, the key can be pushed in beyond the chamfered portion by reversing the dedicated tool and driving the key in using the knurled end face. **Diagram 3**



● Removal

- ① Machine to the depth specified in the dimension table, using the specified drill size. **Diagram 1**
- ② Tip the key over in the hole, break it, and remove it. **Diagram 2**
- ③ Remove the insert using a commercially available bolt remover or similar. **Diagram 3**
- ④ Mount a new insert following the mounting method. **Diagram 4**



● Part number specification

SHINS-M6-M10 Keyed Female-Thread Reinforcing Insert



SKK-45 Dedicated Mounting Tool



Individual Sales → P.0000 | Cleanroom Wash & Packaging → P.0000 | Screw Length Adjustment → P.0000 | Vibration Resistant → P.0000 | Modification process for captive use → P.0000
1 pc. in 1 bag | Please feel free to contact us | Please feel free to contact us | Please feel free to contact us | Not Available