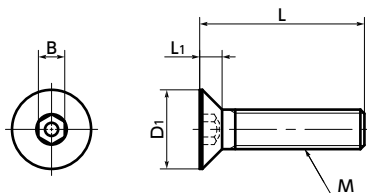




# SNFCM Hex Socket Countersunk Head Screws - Molybdenum

WEB Selection Tool   
 WEB CAD Download   
 Cleanroom wash & packaging   
 Heat-resistance



## ● Mechanical property

	Pure molybdenum	SUS304
Tensile strength (N/mm <sup>2</sup> )	515	520 or above
0.2% Proof Stress (N/mm <sup>2</sup> )	380	205 or Higher
Extension (%)	15	40 or above

● Values in chart are for reference only. They are not guaranteed values.

## ● Physical property

	Pure molybdenum	SUS304
Specific gravity	10.2	7.93
Longitudinal elastic modulus (Gpa)	327	193
Electric resistivity ( $\mu\Omega \cdot m$ )	0.058	0.7
Heat thermal conductivity (W/(m·K))	142	17
Linear expansion coefficient (K <sup>-1</sup> )	$5.1 \times 10^{-6}$	$17.3 \times 10^{-6}$

● Values in chart are for reference only. They are not guaranteed values.

- Made of pure molybdenum.
- Melting point: 2623°C. Excellent heat resistance.
- The flat head does not protrude after tightening.
- Cleanroom wash and cleanroom packing are completed. → P.xxxx

## ● Application

Sputtering equipment and high temperature furnaces

## ● Material/Finish

RoHS2 Compliant

	SNFCM
Main body	Pure molybdenum

## ⚠ Precautions for Use

Note that in an oxidizing atmosphere, sublimation will begin at 600°C or higher.

Unit : mm

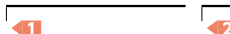
Part Number	M (Coarse)		L						D1	L1	B	Tension Rupture Load*1 (N)	Mass (g)
	Nominal of Thread	Pitch	5	6	8	10	12	16					
<b>SNFCM-M2</b>	M2	0.4	5	6	8	10	12	16	4	1.2	1.3	1130	0.21 - 0.33
<b>SNFCM-M3</b>	M3	0.5	6	8	10	12	16	20	6	1.75	2	2760	0.69 - 1.0
<b>SNFCM-M4</b>	M4	0.7	8	10	12	16	20	25	8	2.3	2.5	4820	1.5 - 2.4

\*1 : Values in chart are for reference only. They are not guaranteed values.

Part Number	Qty per Pack
<b>SNFCM-M2</b>	1
<b>SNFCM-M3</b>	1
<b>SNFCM-M4</b>	1

## ● Part number specification

### SNFCM-M2-6



Individual Sales → P.xxxx	Cleanroom Wash & Packaging → P.xxxx	Screw Length Adjustment → P.xxxx	Vibration Resistant → P.xxxx	Modification process for captive use → P.xxxx
1 unit in 1 bag	Cleanroom washed and packed	Available / Add'l charge	Available / Add'l charge	Not Available