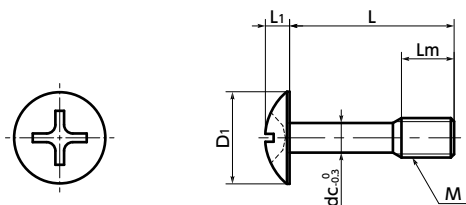




SSCML Phillips Truss Head Captive Screws - SUS316L

Heat-resistance Chemical-proof Non-Magnetic SUS Stainless steel



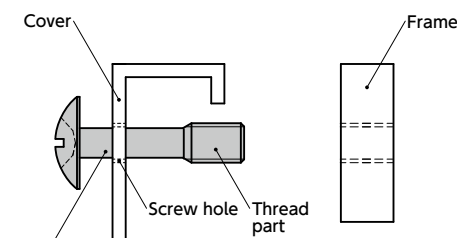
Material/Finish



	SSCML
Main Body	SUS316L
Strength Class	A4-50

Installation Example

Make a screw hole in the cover, and then pass the **SSCML** thread part through it. Even when the screw is removed from the frame, **SSCML** does not fall out of the cover because the **SSCML** thread part catches on the cover screw hole.



SSCML Cross recessed truss head captive screw

⚠ Precautions for Use

- Screw hole inner diameter on the cover side shall be at least the dc dimension.
- The cover thickness should be 0.8mm or above.



- Prevents fall-off and loss of the screw. They are intended to fix protective and inspection covers that are frequently installed and removed.
- For CE Marking compatibility.
- Cross-recessed truss machine screw type. The head is large and the mounting surface has been beautifully decorated.
- This screw has corrosion resistance against chemical products and seawater environments that matches or exceeds SUS304.
- SUS316L is non-magnetic.

Application

For fixing protective covers and maintenance covers
CE Marking compatible
Machine tools / Food machinery / Electrical and electronic equipment

Unit : mm

Part Number 1	M (Coarse)		L 2								Lm	D1	L1	dc	Cross-recessed Socket No.	Mass (g)
	Nominal of Thread	Pitch	8	10	12	16	20	25	30	40						
SSCML-M3	M3	0.5									4	6.9	1.9	2.2	1	0.61 - 0.94
SSCML-M4	M4	0.7									5	9.4	2.5	3	2	1.4 - 2.2
SSCML-M5	M5	0.8									6	11.8	3.1	3.9	2	3.1 - 4.7
SSCML-M6	M6	1									8	14	3.7	4.6	3	4.4 - 7.5
SSCML-M8	M8	1.25									10	17.8	4.8	6.3	3	10 - 18

Part Number Specification

SSCML-M5-20

1

2

1 Individual Sales	Cleanroom Wash & Packaging	Screw Length Adjustment	Vibration Resistant	Modification process for captive use
1 piece in 1 pack	Available / Add'l charge	Not Available	Not Available	with Captive Processing