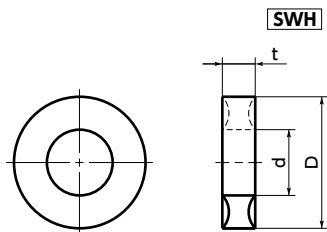


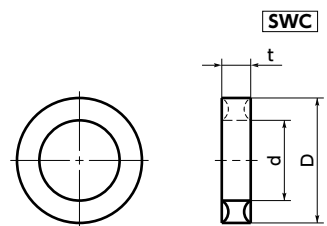
SWH/SWC Locking and Sealing Rings



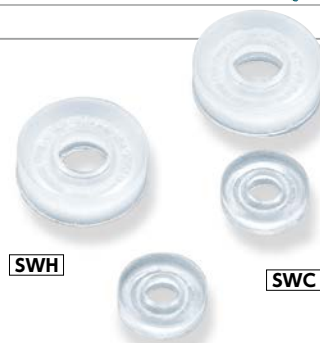
WEB Selection Tool WEB CAD Download



SWH



SWC



SWH

SWC

- For sealing of the bolt tightening section.
- **SWH** — For hex head screws and hex nuts
- **SWC** — For socket head cap screws
- Max. Operating Temperature: -60 to 80°C

• Application

Thread Locking and Thread Sealing

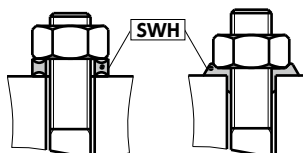
• Material/Finish

RoHS2 Compliant

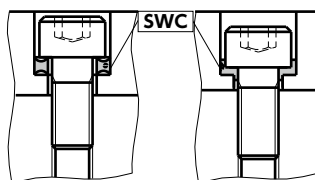
	SWH	SWC
Main Body	Polyamide (White)	Polyamide (White)

• Installation Method

- Before Tightening
- After Tightening



- Before Tightening
- After Tightening



SWH For Hex head screws and hex Nuts

Unit : mm

Part Number	Nominal	d	D	t	Mass (g)	Qty*1 per pack
SWH-3	3	3.2	8	2.2	0.1	10
SWH-4	4	4.15	9.5	2.6	0.1	10
SWH-5	5	5.15	10.6	3	0.2	10
SWH-6	6	6.5	12.7	3.5	0.3	10
SWH-8	8	8.1	16.2	4	0.6	5
SWH-10	10	10.2	19.6	4.5	1	5
SWH-12	12	12.2	23.6	5	1.5	5

*1 : Also sold separately from 1 piece up. → P.xxxx

SWC For Hex Socket Head Cap Screws

Unit : mm

Part Number	Nominal	d	D	t	Mass (g)	Qty*1 per pack
SWC-4	4	4.1	7.7	2	0.1	10
SWC-5	5	5.15	9.8	3	0.2	10
SWC-6	6	6.5	10.5	2.5	0.2	10
SWC-8	8	8.1	14	3.3	0.3	10
SWC-10	10	10.2	17	3.8	0.5	10
SWC-12	12	12.2	19	4.4	0.7	5

*1 : Also sold separately from 1 piece up. → P.xxxx

• Part number specification

SWC-10



Order in number of packs.

Also sold separately from 1 piece up. → P.xxxx

Individual Sales → P.xxxxx	Cleanroom Wash & Packaging → P.xxxxx	Screw Length Adjustment → P.xxxxx	Vibration Resistant → P.xxxxx	Modification process for captive use → P.xxxxx
Available / Add'l charge	Not Available	Not Available	Not Available	Not Available