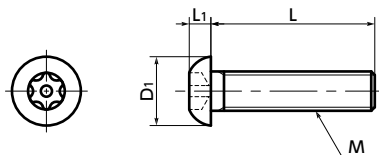




SRBS Hexalobular Button Head Cap Screws with Pin

Selection Tool
 CAD Download
 Tamper Resistance
 SUS Stainless steel



Part number specification

SRBS-M5-16



Order in number of packs.
The minimum order is 1 piece. → P.xxxx

- Button head cap screws with a pin at the center of the hexalobular socket *1.
- This prevents mounting and removing with regular tools.
- Use a dedicated wrench **SRX** for mounting and removing.

*1: The hexalobular shape is prescribed by JIS B 1015: 2008(ISO 10664: 2005)"Hexalobular internal driving feature for bolts and screws".

Application

Machinery / Tools / Equipment / Devices disassembly prevention / Tampering prevention / Theft prevention for outdoor facilities / Security measures / Safety measures

Material/Finish



	SRBS
Main Body	Equivalent to SUS304
Strength Class	Equivalent to A2-50

Unit : mm

Part Number	M (Coarse)		L										D1	L1	Applicable Wrench	Hexalobular Socket No.	Mass (g)	
	Nominal of Thread	Pitch	6	8	10	12	16	20	25	30	40	50						
SRBS-M3	M3	0.5	●	●	●	●	●	●	●	●	●	●	●	5.7	1.65	SRX-10	10	0.48 - 1.4
SRBS-M4	M4	0.7	●	●	●	●	●	●	●	●	●	●	●	7.6	2.2	SRX-20	20	1.2 - 3.2
SRBS-M5	M5	0.8	●	●	●	●	●	●	●	●	●	●	●	9.5	2.75	SRX-25	25	2 - 6.4
SRBS-M6	M6	1	●	●	●	●	●	●	●	●	●	●	●	10.5	3.3	SRX-30	30	3.3 - 12
SRBS-M8	M8	1.25	●	●	●	●	●	●	●	●	●	●	●	14	4.4	SRX-40	40	7.3 - 22

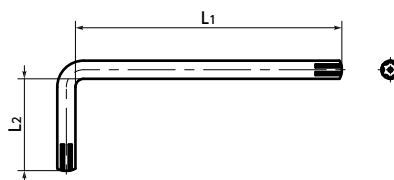
Part Number	L										Qty per Pack
	6	8	10	12	16	20	25	30	40	50	
SRBS-M3	●	●	●	●	●	●	●	●	●	●	20
SRBS-M4	●	●	●	●	●	●	●	●	●	●	20
SRBS-M5	●	●	●	●	●	●	●	●	●	●	20
SRBS-M6	●	●	●	●	●	●	●	●	●	●	10
SRBS-M8	●	●	●	●	●	●	●	●	●	●	10

• The minimum order is 1 piece. → P.xxxx

SRX Dedicated Wrench

Unit : mm

Part Number	L1	L2	Mass (g)	Qty per Pack
SRX-10	60	20	3.7	1
SRX-20	67	23	8.2	1
SRX-25	70	25	11	1
SRX-30	81	28	20	1
SRX-40	88	31	32	1



Individual Sales → P.xxxx
 Cleanroom Wash & Packaging → P.xxxx
 Screw Length Adjustment → P.xxxx
 Vibration Resistant → P.xxxx
 Modification process for captive use → P.xxxx

Available / Add'l charge
 Available / Add'l charge
 Available / Add'l charge
 Available / Add'l charge
 Available / Add'l charge