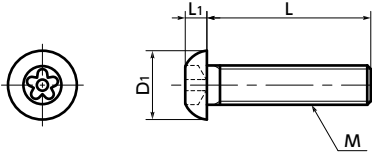


SRGS Button Head Cap Screws with Five - Lobe Holes (with Pin) **NEW**



WEB Selection Tool
 WEB CAD Download
 Tamper Resistance
 SUS Stainless steel



● **Material/Finish**

RoHS2 Compliant

	SRGS
Main Body	Equivalent to SUS304
Strength Class	Equivalent to A2-50

● **Part number specification**

SRGS-M5 - 16



Order in number of packs.
The minimum order quantity is 1 piece. → P.xxxx

● Button head cap screws with a pin at the center of the five slots, inspired by plum blossoms. Also suitable for decorative uses.

● This prevents mounting and removing with regular tools.

● Install and remove with **SRGB** Dedicated Bits and **SRD** Dedicated Magnetic Screwdriver together.

● **Application**

Machinery / Tools / Equipment / Devices disassembly prevention / tampering prevention / Theft prevention for outdoor facilities / Security measures / Safety measures

Unit : mm

Part Number 1	M (Coarse)		L 2								D1	L1	Bit Part No.	Screwdriver Part No.	Mass (g)	
	Nominal of Thread	Pitch														
SRGS-M3	M3	0.5	6	8	10	12	16	20				5.7	1.65	SRGB-3	SRD-6.35	0.43 - 1
SRGS-M4	M4	0.7	6	8	10	12	16	20	25	30	40	7.6	2.2	SRGB-4	SRD-6.35	0.88 - 3.4
SRGS-M5	M5	0.8			10	12	16	20	25	30	40	9.5	2.75	SRGB-56	SRD-6.35	2.1 - 5.7
SRGS-M6	M6	1			10	12	16	20	25	30	40	10.5	3.3	SRGB-56	SRD-6.35	3.2 - 10
SRGS-M8	M8	1.25					16	20	25	30	40	14.0	4.4	SRGB-8	SRD-6.35	8.2 - 19

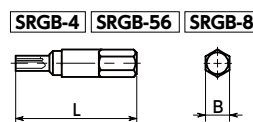
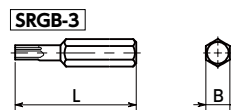
Part Number	Qty per pack
SRGS-M3	10
SRGS-M4	10
SRGS-M5	10
SRGS-M6	10
SRGS-M8	5

● The minimum order is 1 piece. → P.xxxx

● **SRGB** Dedicated bits

Unit : mm

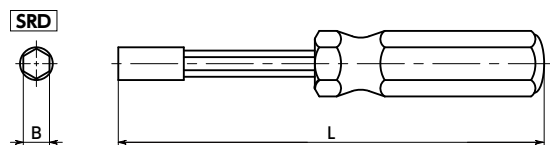
Part Number	L	B	Mass (g)	Qty per pack
SRGB-3	32	6.35	6	1
SRGB-4	32	6.35	7.1	1
SRGB-56	32	6.35	7.5	1
SRGB-8	32	6.35	8.2	1



● **SRD** Dedicated magnet screwdriver

Unit : mm

Part Number	L	B	Mass (g)	Qty per pack
SRD-6.35	210	6.35	98	1



Individual Sales → P.xxxx
 Cleanroom Wash & Packaging → P.xxxx
 Screw Length Adjustment → P.xxxx
 Vibration Resistant → P.xxxx
 Modification process for captive use → P.xxxx

Available / Add'l charge Available / Add'l charge Available / Add'l charge Available / Add'l charge Available / Add'l charge