

SNPTG Cross Recessed Pan Head Machine Screws - High Intensity Titanium Alloy



WEB Selection Tool

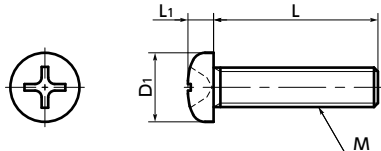
WEB CAD Download

Cleanroom wash & packaging

Non-Magnetic

High strength

Lightweight



Physical property

	Ti-15-3-3-3 (β Titanium)
Specific Gravity	4.8
Longitudinal Elastic Modulus (GPa)	90
Amplitude Permeability (μ)	1.0002 (Nonmagnetic)

• Values in chart are for reference only. They are not guaranteed values.

Mechanical property

	Ti-15-3-3-3 (β Titanium)
Tensile Strength (N/mm ²)	705 - 945
0.2% Proof Stress (N/mm ²)	690 - 835
Elongation (%)	12 or Higher

• Values in chart are for reference only. They are not guaranteed values.

- Screws made of high strength titanium alloy.
- Specific gravity is approximately 60% of stainless steel.
- Nonmagnetic.
- These screws are resistant to corrosion and are particularly strong against seawater.
- About the properties of titanium → P.xxxx
- Chemical polishing and brightening processing improve the screw surface. Furthermore, the screws are cleanroom washed, cleanroom packed, and comply with clean specifications that require no oil or foreign matter deposits.

SNPTG

Unprocessed



Application

Lightweight applications in automobiles, aircrafts, spacecrafts, and robots FPD production equipment, semiconductor devices, electrical and electronic equipment, and aquatic applications

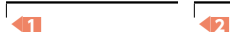
Material/Finish

RoHS2 Compliant

	SNPTG
Main Body	Ti-15-3-3-3 (β Titanium)

Part number specification

SNPTG-M5-20



Unit : mm

Part Number 1	M (Coarse)		L 2	D1	L1	Tension*1 Rupture Load (N)	Mass (g)
	Nominal of Thread	Pitch					
SNPTG-M3	M3	0.5	6 8 10 12 15 20	5.5	2	4170	0.33 - 0.68
SNPTG-M4	M4	0.7	6 8 10 12 15 20 25	7	2.6	7520	0.63 - 1.5
SNPTG-M5	M5	0.8	8 10 12 15 20 25	9	3.3	11900	1.4 - 2.6

*1 : Values in chart are for reference only. They are not guaranteed values.

Part Number	Qty per pack
SNPTG-M3	1
SNPTG-M4	1
SNPTG-M5	1

Individual Sales → P.xxxx	Cleanroom Wash & Packaging → P.xxxx	Screw Length Adjustment → P.xxxx	Vibration Resistant → P.xxxx	Modification process for captive use → P.xxxx
1 unit in 1 bag	Cleanroom washed and packed	Available / Add'l charge	Available / Add'l charge	Available / Add'l charge