

SNSTG Hex Socket Head Cap Screws - High Intensity Titanium Alloy



WEB Selection Tool

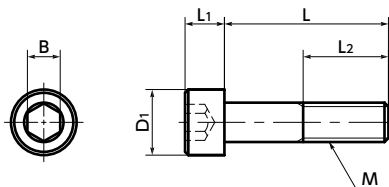
WEB CAD Download

Cleanroom wash & packaging

Non-Magnetic

High strength

Lightweight



Physical property

	Ti-6Al-4V (64 Titanium)
Specific Gravity	4.43
Melting Point (°C)	1540
Longitudinal Elastic Modulus (GPa)	113
Thermal Conductivity (W / (m · k))	7.5
Linear Expansion Coefficient (K ⁻¹)	8.8 × 10 ⁻⁶
Electric Resistance (μΩ · m)	1.7
Amplitude Permeability (μ)	1.0002 (Nonmagnetic)

• Values in chart are for reference only. They are not guaranteed values.

Mechanical property

	Ti-6Al-4V (64 Titanium)
Tensile Strength (N/mm ²)	895 or Higher
0.2% Proof Stress (N/mm ²)	825 or Higher
Elongation (%)	10 or Higher

• Values in chart are for reference only. They are not guaranteed values.

- Screws made of high strength titanium alloy.
- Specific gravity is approximately 60% of stainless steel.
- Nonmagnetic.
- These screws are resistant to corrosion and are particularly strong against seawater.
- Chemical polishing and brightening processing improve the screw surface. Furthermore, the screws are cleanroom washed, cleanroom packed, and comply with clean specifications that require no oil or foreign matter deposits.
- About the properties of titanium → P.xxxx
- Application

Lightweight applications in automobiles, aircrafts, spacecrafts, and robots FPD production equipment, semiconductor devices, electrical and electronic equipment, and aquatic applications

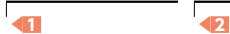
Material/Finish



SNSTG	
Main Body	Ti-6Al-4V (64 Titanium)

Part number specification

SNSTG-M5-20



Unit : mm

Part Number	M (Coarse)		L	D1	L1	B	L2*1	Tension*2 Rupture Load (N)	Mass (g)
	Nominal of Thread	Pitch							
SNSTG-M3	M3	0.5	6 8 10 12 16 20	5.5	3	2.5	Full Thread	5240	0.4 - 0.77
SNSTG-M4	M4	0.7	8 10 12 16 20 25 30	7	4	3	Full Thread	8850	0.94 - 2.1
SNSTG-M5	M5	0.8	10 12 16 20 25 30 35	8.5	5	4	Full Thread	14700	1.5 - 3.6
SNSTG-M6	M6	1	10 12 16 20 25 30 35 40 45 50	10	6	5	45(L=50)	20800	2.7 - 7.5
SNSTG-M8	M8	1.25	16 20 25 30 35 40 45 50	13	8	6	45(L=50)	33700	6.9 - 14
SNSTG-M10	M10	1.5	16 20 25 30 35 40 45 50	16	10	8	45(L=50)	58900	12 - 22

*1 : If the " L " value is not in parentheses, the screw is full thread.

*2 : Values in chart are for reference only. They are not guaranteed values.

Part Number	Qty per pack
SNSTG-M3	1
SNSTG-M4	1
SNSTG-M5	1
SNSTG-M6	1
SNSTG-M8	1
SNSTG-M10	1

Individual Sales → P.xxxx	Cleanroom Wash & Packaging → P.xxxx	Screw Length Adjustment → P.xxxx	Vibration Resistant → P.xxxx	Modification process for captive use → P.xxxx
1 unit in 1 bag	Cleanroom washed and packed	Available / Add'l charge	Available / Add'l charge	Available / Add'l charge