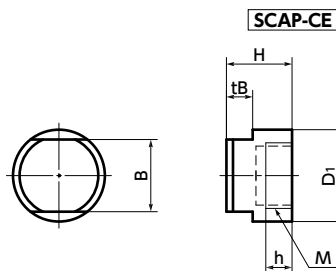
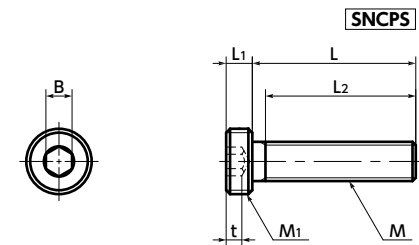


SCAP-AL



SCAP-CE



SNCPS



SCAP-CE

SCAP-AL

- Combine **SCAP** Cover Cap and **SNCPS** Socket Head Cap Screw for Cover Cap.
- These caps prevent the corrosion of screw heads due to vacuum chamber processing gas and plasma.
- SCAP** has 2 material types as standard.
  - SCAP-AL** — Aluminum alloy
  - SCAP-CE** — Ceramic
- The screw connection section is made of stainless steel, so this product has a higher tightening strength than aluminum or ceramic screws.
- Cleanroom wash and cleanroom packing are completed. → P.xxxx
- Other requested materials such as Inconel\*1 and Hastelloy\*1 can be used for Cover Caps.
  - \*1: Inconel is a registered trademark of Special Metals Corporation.
  - \*1: Hastelloy is a registered trademark of Haynes International, Inc.

#### Application

Film formation equipment, etching devices, FPD production equipment, and semiconductor devices

#### Material/Finish



|                | SCAP-AL<br>Cover Caps | SCAP-CE<br>Cover Caps                             | SNCPS<br>Cap Screws              |
|----------------|-----------------------|---|----------------------------------|
| Main Body      | A5056                 | Al <sub>2</sub> O <sub>3</sub><br>(99.5% Alumina) | SUSXM7<br>(Equivalent to SUS304) |
| Strength Class |                       |   | A2-50                            |

#### SCAP-AL Cover Caps : Aluminum Alloy (A5056)

Unit : mm

| Part Number | M        | H  | D1 | h   | a   | ta  | Recommendation Torque<br>(N・m) | SNCPS<br>Part.No | Mass (g) | Qty per pack |
|-------------|----------|----|----|-----|-----|-----|--------------------------------|------------------|----------|--------------|
| SCAP-3-AL   | M5×0.5   | 5  | 7  | 2   | 0.8 | 0.6 | 0.1                            | SNCPS-M3         | 0.4      | 1            |
| SCAP-4-AL   | M6×0.75  | 7  | 8  | 2.8 | 1.2 | 1   | 0.15                           | SNCPS-M4         | 0.6      | 1            |
| SCAP-5-AL   | M8×0.75  | 8  | 10 | 3.5 | 1.2 | 1   | 0.3                            | SNCPS-M5         | 1        | 1            |
| SCAP-6-AL   | M10×0.75 | 9  | 12 | 4   | 1.6 | 1.2 | 0.4                            | SNCPS-M6         | 1.5      | 1            |
| SCAP-8-AL   | M12×1    | 11 | 14 | 5   | 2   | 1.8 | 0.6                            | SNCPS-M8         | 2.3      | 1            |
| SCAP-10-AL  | M16×1    | 12 | 18 | 6   | 2.5 | 2   | 0.8                            | SNCPS-M10        | 3.7      | 1            |

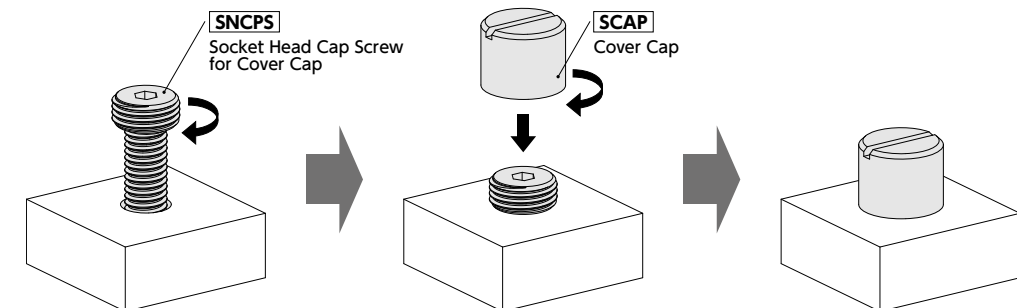
#### SCAP-CE Cover Caps : Ceramic (Al<sub>2</sub>O<sub>3</sub>)

Unit : mm

| Part Number | M        | H  | D1 | h   | B  | tB | Recommendation Torque<br>(N・m) | SNCPS<br>Part.No | Mass (g) | Qty per pack |
|-------------|----------|----|----|-----|----|----|--------------------------------|------------------|----------|--------------|
| SCAP-3-CE   | M5×0.5   | 6  | 9  | 2   | 7  | 3  | 0.1                            | SNCPS-M3         | 1.2      | 1            |
| SCAP-4-CE   | M6×0.75  | 8  | 10 | 2.8 | 8  | 3  | 0.15                           | SNCPS-M4         | 2        | 1            |
| SCAP-5-CE   | M8×0.75  | 9  | 12 | 3.5 | 9  | 3  | 0.3                            | SNCPS-M5         | 3        | 1            |
| SCAP-6-CE   | M10×0.75 | 10 | 14 | 4   | 11 | 4  | 0.4                            | SNCPS-M6         | 4.3      | 1            |
| SCAP-8-CE   | M12×1    | 11 | 16 | 5   | 13 | 4  | 0.6                            | SNCPS-M8         | 5.8      | 1            |
| SCAP-10-CE  | M16×1    | 12 | 20 | 6   | 17 | 4  | 0.8                            | SNCPS-M10        | 9.2      | 1            |

|                           |                                     |                                  |                              |   |
|---------------------------|-------------------------------------|----------------------------------|------------------------------|---|
| Individual Sales → P.xxxx | Cleanroom Wash & Packaging → P.xxxx | Screw Length Adjustment → P.xxxx | Vibration Resistant → P.xxxx | Modification process for captive use → P.xxxx |
| 1 pc. in 1 bag            | Cleanroom washed and packed         | S.S. only/ Add'l charge          | Not Available                | Not Available                                 |

- Usage  
After tightening **SNCPS** Socket Head Cap Screw for Cover Cap, assemble **SCAP** Cover Cap so that it covers the head of **SNCPS**.  
Ensure that the tightening torque of **SCAP** does not exceed the recommendation torque in the chart.



#### Precautions for Use

Corrosion resistance changes depending on use conditions. Always carry out tests under conditions same as actual conditions before use.

#### Related Products

**SCAP-PT** Cover Cap made of PTFE (Teflon), which has excellent chemical resistance, is available.  
→ P.xxxx



#### Part number specification

**SCAP-6-AL** **SCAP** Cover Cap

**SNCPS-M6-20** **SNCPS** Cap Screw for Cover Cap

Order the **SCAP** and **SNCPS** individually.

#### SNCPS Socket Head Cap Screw for Cover Cap

Unit : mm

| Part Number | M   | L              | M1       | L1  | B   | t   | L2*1        | SCAP<br>Part.No | Mass (g)    |
|-------------|-----|----------------|----------|-----|-----|-----|-------------|-----------------|-------------|
| SNCPS-M3    | M3  | 6 8 10 12      | M5×0.5   | 2   | 2   | 1.5 | Full Thread | SCAP-3          | 0.53 - 0.78 |
| SNCPS-M4    | M4  | 8 10 12 16     | M6×0.75  | 2.8 | 2.5 | 2.3 | Full Thread | SCAP-4          | 1.3 - 1.9   |
| SNCPS-M5    | M5  | 10 12 16 20    | M8×0.75  | 3.5 | 3   | 2.7 | Full Thread | SCAP-5          | 2 - 3.3     |
| SNCPS-M6    | M6  | 12 16 20 25    | M10×0.75 | 4   | 4   | 3   | Full Thread | SCAP-6          | 3.8 - 6.4   |
| SNCPS-M8    | M8  | 16 20 25 30 35 | M12×1    | 5   | 5   | 3.8 | 22(L=35)    | SCAP-8          | 9 - 16      |
| SNCPS-M10   | M10 | 20 25 30 35 40 | M16×1    | 6   | 6   | 4.5 | 26(L=40)    | SCAP-10         | 17 - 27     |

\*1: If the "L" value is other than the value in parentheses, the screw is full thread.

| Part Number | Qty per pack |
|-------------|--------------|
| SNCPS-M3    | 1            |
| SNCPS-M4    | 1            |
| SNCPS-M5    | 1            |
| SNCPS-M6    | 1            |
| SNCPS-M8    | 1            |
| SNCPS-M10   | 1            |