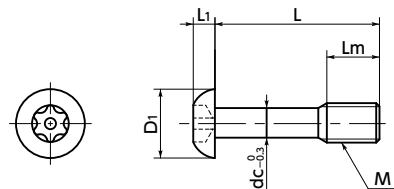


SSC-SRBS Captive Button Head Cap Screws with Hexalobular Socket (with Pin)

SUS Stainless steel Tamper Resistance



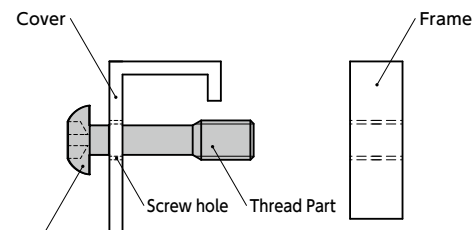
● Material/Finish



SSC-SRBS	
Main Body	Equivalent to SUS304
Strength Class	Equivalent to A2-50

● Installation example

Machine a screw hole on the cover and let through the threaded part of **SSC-SRBS**. Threaded part of **SSC-SRBS** is still engaged with the screw hole on the cover even after the screw is removed from the frame, so **SSC-SRBS** never fall out of the cover.



SSC-SRBS Captive Button Head Cap Bolt with Hexalobular Socket (with Pin)

⚠ Precautions for Use

- Screw hole inner diameter on the cover side shall be at least the dc dimension.
- The cover thickness should be 0.8 mm or above.



- Prevents fall-off and loss of the screw. They are intended to fix protective and inspection covers that are frequently installed and removed.
- Tamper resistant screw type.
- For CE Marking compatibility. → P.xxxx
- Install and remove with **SRX** Dedicated Wrench or **SRXB** Dedicated Bit and **SRD** Dedicated Magnetic Screwdriver together.
- We also produce captive screws of special specifications, e.g. dimensions, shapes, materials and surface treatment. Please contact our customer service.



● Application

Fixing of protection cover and cover for inspection / CE marking Machine tool / Food machinery / and Electronic device

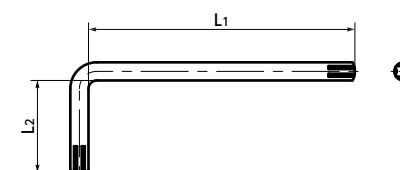
Part Number	M (Coarse)		L										Lm	D1	L1	dc	Applicable Wrench Type	Applicable Bit Type		Hexalobular Socket No.	Mass (g)
	Nominal of Thread	Pitch	8	10	12	16	20	25	30	40	Bit	Driver									
SSC-SRBS-M3	M3	0.5	8	10	12	16						4	5.7	1.65	2.2	SRX-10	SRXB-10	SRD-6.35	10	0.57 - 0.93	
SSC-SRBS-M4	M4	0.7		10	12	16	20					5	7.6	2.2	3	SRX-20	SRXB-20	SRD-6.35	20	1.4 - 2.2	
SSC-SRBS-M5	M5	0.8			12	16	20	25				6	9.5	2.75	3.9	SRX-25	SRXB-25	SRD-6.35	25	2.3 - 4.1	
SSC-SRBS-M6	M6	1				12	16	20	25	30		8	10.5	3.3	4.5	SRX-30	SRXB-30	SRD-6.35	30	3.6 - 6.9	
SSC-SRBS-M8	M8	1.25					16	20	25	30	40	10	14	4.4	6.3	SRX-40	SRXB-40	SRD-6.35	40	9.1 - 18	

Unit : mm

● **SRX** Dedicated Wrench

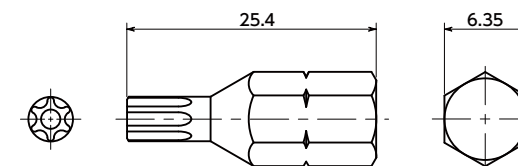
Unit : mm

Part Number	L1	L2	Mass (g)
SRX-10	60	20	3.7
SRX-20	67	23	8.2
SRX-25	70	25	11
SRX-30	81	28	20
SRX-40	88	31	32



● **SRXB** Bit Part No.

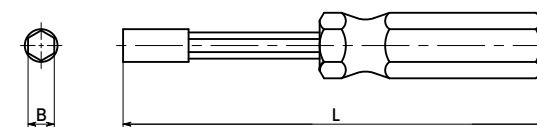
Part Number	Mass (g)
SRXB-10	4.36
SRXB-20	4.57
SRXB-25	4.79
SRXB-30	5.50
SRXB-40	6.00



● **SRD** Dedicated magnet screwdriver

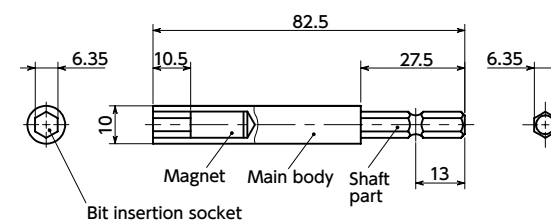
Unit : mm

Part Number	L	B	Mass (g)
SRD-6.35	210	6.35	98



● **SKABA** Applicable Bit Adapter

Part Number	Mass (g)
SKABA-80-6.35	37



● Part number specification

SSC-SRBS-M6-12

Individual Sales → P.xxxx	Cleanroom Wash & Packaging → P.xxxx	Screw Length Adjustment → P.xxxx	Vibration Resistant → P.xxxx	Modification process for captive use → P.xxxx
1 piece in 1 pack	Available / Add'l charge	Not Available	Not Available	with Captive Processing