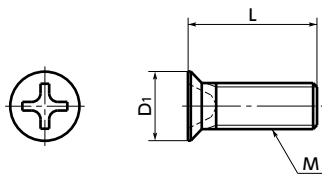




SPE-MF Plastic Cross Recessed Micro Flat Head Machine Screws - PEEK

Heat-resistance
 Chemical-proof
 Miniature Size
 Electrical Insulation



Material/Finish

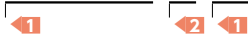


SPE-MF	
Main Body	PEEK (Polyether Ether Ketone) (Light Brown)
Heat Resistance Temperature*1	260°C

*1: This is the value for the resin material. The operating temperature of the product changes with performance conditions such as tightening torque.

Part Number Specification

SPE-M1.6-4-MF



- PEEK miniature screws for precision instruments.
- PEEK is a thermoplastic super engineering plastic superior in physical and chemical properties.
- Excellent chemical resistance. It remains almost unaffected by chemicals other than concentrated sulfuric acid, concentrated nitric acid, and concentrated hydrofluoric acid.
- With excellent heat resistance and water resistance, it retains strength at high temperatures.
- It features outstanding resistance to wear, shock, and fatigue.
- It also has high flame retardance which clears the UL 94 V-0 standard.
- For the properties and precautions for use of plastic screws, see "Properties of Plastic Screws."

Application

FPD production equipment / Semiconductor manufacturing equipment / Printed circuit board etching devices / Metallic surface treatment equipment and facilities / Chemical plants / Transformers / Electrical and electronic equipment / Hot water pumps / Chemical pumps

Unit : mm

Part Number	M (Coarse)		L	D1	Cross-recessed Socket No.	Tensile Breaking Load*1 (N)	Torsional Torque*1 (N·m)	Mass (g)	Qty per Pack
	Nominal of Thread	Pitch							
SPE-M1.2-MF	M1.2	0.25	2.5 4	2.3	0	58	0.03	0.004 - 0.006	10
SPE-M1.2-MF(100)	M1.2	0.25	2.5 4	2.3	0	58	0.03	0.004 - 0.006	100
SPE-M1.4-MF	M1.4	0.3	2.5 4	2.5	0	82	0.037	0.005 - 0.006	10
SPE-M1.4-MF(100)	M1.4	0.3	2.5 4	2.5	0	82	0.037	0.005 - 0.006	100
SPE-M1.6-MF	M1.6	0.35	2.5 4	2.8	0	93	0.043	0.006 - 0.008	10
SPE-M1.6-MF(100)	M1.6	0.35	2.5 4	2.8	0	93	0.043	0.006 - 0.008	100

*1: Values in chart are for reference only. They are not guaranteed values. The recommended tightening torque is 50% of the torsional torque.

- When purchasing less volume than one full bag, a separate handling fee is charged. For details, see the Sold Separately Service.

Individual Sales	Cleanroom Wash & Packaging	Screw Length Adjustment	Vibration Resistant	Modification process for captive use
Available / Add'l charge	Available / Add'l charge	Not Available	Not Available	Not Available