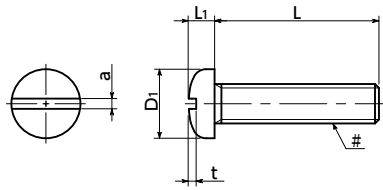


# SPE-PS(INCH) Plastic Inch Slotted Pan Head Machine Screws - PEEK

Heat-resistance Chemical-proof Electrical Insulation



● Material/Finish



SPE-PS(INCH)	
Main Body	PEEK (Polyether Ether Ketone) (Light Brown)
Heat Resistance Temperature*1	260°C

\*1: This is the value for the resin material. The operating temperature of the product changes with performance conditions such as tightening torque.

⚠ Precautions for Use

Because a cumulative pitch difference is created when PEEK screws are manufactured, use these screws with nuts. If a nut is not used, use a 20 mm (approx. 0.79") or less fit with female thread.

- PEEK slotted pan head machine screws.
- Inch screw type.
- PEEK is a thermoplastic super engineering plastic superior in physical and chemical properties.
- Excellent chemical resistance. It remains almost unaffected by chemicals other than concentrated sulfuric acid, concentrated nitric acid, and concentrated hydrofluoric acid.
- With excellent heat resistance and water resistance, it retains strength at high temperatures.
- It features outstanding resistance to wear, shock, and fatigue.
- It also has high flame retardance which clears the UL 94 V-0 standard.
- For the properties and precautions for use of plastic screws, see "Properties of Plastic Screws."

● Application

FPD production equipment / Semiconductor manufacturing equipment / Printed circuit board etching devices / Metallic surface treatment equipment and facilities / Chemical plants / Transformers / Electrical and electronic equipment / Hot water pumps / Chemical pumps



Unit: inch

Part Number <sup>1</sup>	# Nominal of Thread	L <sup>2</sup>								D1	L1	a	t	Tensile Breaking Load*1 (N)	Torsional Torque*1 (N·m)	Mass (g)	Qty per Pack
		1/4	5/16	3/8	1/2	5/8	3/4	7/8	1								
<b>SPE-#4-40-PS</b>	No.4-40UNC	1/4	5/16	3/8	1/2	5/8	3/4	7/8	1	0.219	0.068	0.039	0.040	306	0.19	0.078 - 0.14	10
<b>SPE-#4-40-PS(100)</b>	No.4-40UNC	1/4	5/16	3/8	1/2	5/8	3/4	7/8	1	0.219	0.068	0.039	0.040	306	0.19	0.078 - 0.14	100
<b>SPE-#6-32-PS</b>	No.6-32UNC	1/4	5/16	3/8	1/2	5/8	3/4	7/8	1	0.27	0.082	0.048	0.050	459	0.33	0.17 - 0.29	10
<b>SPE-#6-32-PS(100)</b>	No.6-32UNC	1/4	5/16	3/8	1/2	5/8	3/4	7/8	1	0.27	0.082	0.048	0.050	459	0.33	0.17 - 0.29	100
<b>SPE-#8-32-PS</b>	No.8-32UNC	1/4	5/16	3/8	1/2	5/8	3/4	7/8	1	0.322	0.096	0.054	0.058	746	0.61	0.27 - 0.39	10
<b>SPE-#8-32-PS(100)</b>	No.8-32UNC	1/4	5/16	3/8	1/2	5/8	3/4	7/8	1	0.322	0.096	0.054	0.058	746	0.61	0.27 - 0.39	100
<b>SPE-#10-32-PS</b>	No.10-32UNF			3/8	1/2	5/8	3/4	7/8	1	0.373	0.11	0.06	0.068	1090	0.95	0.36 - 0.66	10
<b>SPE-#10-32-PS(100)</b>	No.10-32UNF			3/8	1/2	5/8	3/4	7/8	1	0.373	0.11	0.06	0.068	1090	0.95	0.36 - 0.66	100

\*1: Values in chart are for reference only. They are not guaranteed values. The recommended tightening torque is 50% of the torsional torque.

● When purchasing less volume than one full bag, a separate handling fee is charged. For details, see the Sold Separately Service.

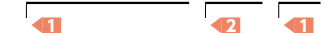
● Related Products

PEEK hex nuts (inch screw) **SPE-N(INCH)** are available.



● Part Number Specification

**SPE-#4-40-1/4-PS**



Individual Sales Available / Add'l charge	Cleanroom Wash & Packaging Available / Add'l charge	Screw Length Adjustment Available / Add'l charge	Vibration Resistant Not Available	Modification process for captive use Not Available
---	---	--	-----------------------------------	--