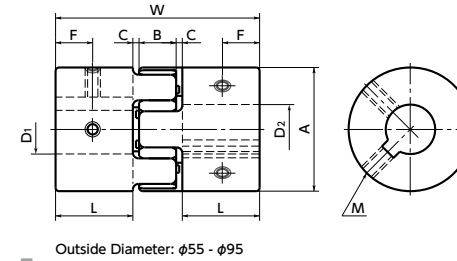
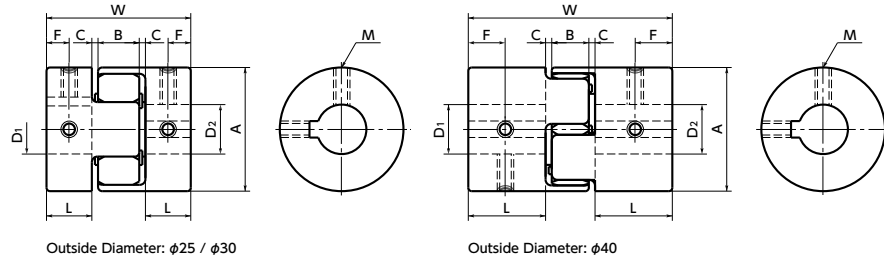
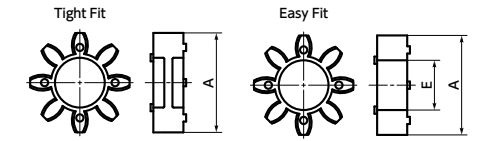


MJC-K Flexible Coupling - Jaw - Type - Set Screw + Key Type Additional Size

- WEB Selection Tool
- CAD Download
- High torque
- Vibration absorption
- Electrical Insulation



Sleeve Details



Ambient Temperature / Temperature Correction Factor

Ambient Temperature	Temperature Correction Factor
-20°C to 30°C	1.00
30°C to 40°C	0.80
40°C to 60°C	0.70

Dimensions

Unit : mm

Part Number	A	L	W	B	C*1	Sleeve E	F	M	Screw Tightening Torque (N·m)
MJC-25K	25	12	34	8	1	8	6	M4	1.7
MJC-30K	30	11	35	10	1.5	10	5.5	M4	1.7
MJC-40K	40	25	66	12	2	17	12.5	M5	4
MJC-55K	55	30	78	14	2	26	15	M6	7
MJC-65K	65	35	90	15	2.5	29.5	17.5	M8	15
MJC-80K	80	45	114	18	3	35.5	22.5	M8	15
MJC-95K	95	50	126	20	3	44	25	M8	15

*1 : Use with C Dimension

Part Number	Standard Bore Diameter (dimensional allowance H8)																
	D1 · D2	3	10	11	12	14	15	16	18	19	20	22	24	25	28	30	
MJC-25K	●	●	●	●	●												
MJC-30K	●	●	●	●	●	●	●	●	●	●	●	●	●	●	●	●	●
MJC-40K	●	●	●	●	●	●	●	●	●	●	●	●	●	●	●	●	●
MJC-55K	●	●	●	●	●	●	●	●	●	●	●	●	●	●	●	●	●
MJC-65K					●	●	●	●	●	●	●	●	●	●	●	●	●
MJC-80K											●	●	●	●	●	●	●
MJC-95K												●	●	●	●	●	●

Part Number	Standard Bore Diameter (dimensional allowance H7)												
	D1 · D2	3	1/2	9/16	5/8	11/16	3/4	13/16	7/8	15/16	1	1-1/8	1-1/4
MJC-25K	●												
MJC-30K	●	●		●									
MJC-40K	●	●	●	●	●	●	●	●	●	●	●	●	●
MJC-55K	●	●	●	●	●	●	●	●	●	●	●	●	●
MJC-65K	●	●	●	●	●	●	●	●	●	●	●	●	●
MJC-80K											●	●	●
MJC-95K											●	●	●

- All products are provided with hex socket set screw.
- Recommended dimensional allowances of applicable shaft diameter are h6 and h7.
- A set of hubs with key type for one side and clamping type or other type for the other side is available upon request.

Part number specification

MJC-40K-EGR-11-12



- Additional Keyway at Shaft Hole → P. xxxx
 - Cleanroom Wash & Packaging → P. xxxx
 - Change to Stainless Steel Screw → P. xxxx
- Please feel free to contact us Available / Add'l charge Available / Add'l charge

Performance

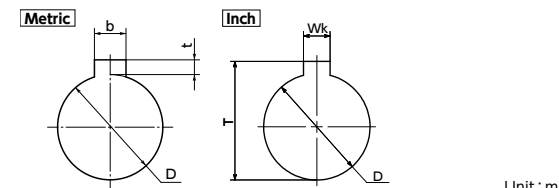
Part Number	Sleeve		Max. Bore Diameter (mm)	Rated*1 torque (N·m)	Max.*1 torque (N·m)	Zero Backlash*3 Allowable Transmission Torque (N·m)	Max. Rotational Frequency (min ⁻¹)	Moment*2 of Inertia (kg·m ²)	Static Torsional Stiffness (N·m/rad)	Max. Lateral Misalignment (mm)	Max. Angular Misalignment (°)	Max. Axial Misalignment (mm)	Mass*2 (g)	Sleeve Hardness (JIS)
	Tight Fit	Easy Fit												
MJC-25K	BL	EBL	12.7	3	6	0.4	25000	3.2 × 10 ⁻⁶	32	0.2	1	+0.9 0	33	A80
MJC-30K	BL	EBL	16	4	8	0.5	21000	6.1 × 10 ⁻⁶	46	0.2	1	+1.0 0	43	
MJC-40K	BL	EBL	25	4.9	9.8	1.2	15000	3.6 × 10 ⁻⁵	380	0.15	1	+1.2 0	130	
MJC-55K	BL	EBL	32	17	34		11000	1.6 × 10 ⁻⁴	1400	0.2	1	+1.4 0	310	
MJC-65K	BL	EBL	38.1	46	92		9000	3.6 × 10 ⁻⁴	2800	0.2	1	+1.5 0	510	
MJC-80K	BL	EBL	45	95	190		7000	1.1 × 10 ⁻³	3200	0.2	1	+1.8 0	1000	
MJC-95K	BL	EBL	55	130	260		6000	2.3 × 10 ⁻³	3600	0.2	1	+2.0 0	1500	
MJC-25K	WH	EWH	12.7	5	10	0.4	25000	3.2 × 10 ⁻⁶	60	0.15	1	+0.9 0	33	A92
MJC-30K	WH	EWH	16	7.5	15	0.5	21000	6.1 × 10 ⁻⁶	73	0.15	1	+1.0 0	43	
MJC-40K	WH	EWH	25	10	20	1.2	15000	3.6 × 10 ⁻⁵	570	0.1	1	+1.2 0	130	
MJC-55K	WH	EWH	32	35	70		11000	1.6 × 10 ⁻⁴	1600	0.15	1	+1.4 0	310	
MJC-65K	WH	EWH	38.1	95	190		9000	3.6 × 10 ⁻⁴	3000	0.15	1	+1.5 0	510	
MJC-80K	WH	EWH	45	190	380		7000	1.1 × 10 ⁻³	5300	0.15	1	+1.8 0	1000	
MJC-95K	WH	EWH	55	265	530		6000	2.3 × 10 ⁻³	6200	0.15	1	+2.0 0	1500	
MJC-25K	RD	ERD	12.7	7.2	14.4	0.4	25000	3.2 × 10 ⁻⁶	120	0.1	1	+0.9 0	33	A98
MJC-30K	RD	ERD	16	12.5	25	0.5	21000	6.1 × 10 ⁻⁶	130	0.1	1	+1.0 0	43	
MJC-40K	RD	ERD	25	17	34	1.2	15000	3.6 × 10 ⁻⁵	1200	0.1	1	+1.2 0	130	
MJC-55K	RD	ERD	32	60	120		11000	1.6 × 10 ⁻⁴	2600	0.1	1	+1.4 0	310	
MJC-65K	RD	ERD	38.1	160	320		9000	3.6 × 10 ⁻⁴	4900	0.1	1	+1.5 0	510	
MJC-80K	RD	ERD	45	325	650		7000	1.1 × 10 ⁻³	6500	0.1	1	+1.8 0	1000	
MJC-95K	RD	ERD	55	450	900		6000	2.3 × 10 ⁻³	8900	0.1	1	+2.0 0	1500	
MJC-25K	GR	EGR	12.7	9.6	19.2	0.4	25000	3.2 × 10 ⁻⁶	160	0.08	1	+0.9 0	33	D64
MJC-30K	GR	EGR	16	16	32	0.5	21000	6.1 × 10 ⁻⁶	200	0.08	1	+1.0 0	43	
MJC-40K	GR	EGR	25	21	42	1.2	15000	3.6 × 10 ⁻⁵	3000	0.08	1	+1.2 0	130	
MJC-55K	GR	EGR	32	75	150		11000	1.6 × 10 ⁻⁴	9000	0.08	1	+1.4 0	310	
MJC-65K	GR	EGR	38.1	200	400		9000	3.6 × 10 ⁻⁴	13000	0.08	1	+1.5 0	510	
MJC-80K	GR	EGR	45	405	810		7000	1.1 × 10 ⁻³	14000	0.08	1	+1.8 0	1000	
MJC-95K	GR	EGR	55	560	1120		6000	2.3 × 10 ⁻³	15000	0.08	1	+2.0 0	1500	

*1 : Correction of rated torque and max. torque due to load fluctuation is not required. However, if ambient temperature exceeds 30°C, be sure to correct the rated torque and max. torque with temperature correction factor shown in the table. MJC-K's allowable operating temperature is -20°C to 60°C.

*2 : These are values with max. bore diameter.

*3 : For transmission with Zero Backlash, please use a tight fit sleeve.

Details of Shaft Hole



Unit : mm

Standard Bore Diameter D	keyway				Key Nominal Dimension b × h
	Standard Dimension	allowance (JS9)	Standard Dimension	allowance	
10 · 11 · 12	4	±0.0150	1.8	+0.1 0	4 × 4
14 · 15 · 16	5	±0.0150	2.3	+0.1 0	5 × 5
18 · 19 · 20 · 22	6	±0.0150	2.8	+0.1 0	6 × 6
24 · 25 · 28 · 30	8	±0.0180	3.3	+0.2 0	8 × 7
32 · 35 · 38	10	±0.0180	3.3	+0.2 0	10 × 8
40 · 42	12	±0.0215	3.3	+0.2 0	12 × 8
45 · 48 · 50	14	±0.0215	3.8	+0.2 0	14 × 9
55	16	±0.0215	4.3	+0.2 0	16 × 10

Unit : inch

Standard Inch Bore Diameter D	Keyway			
	Wk Standard Dimension	Allowance	T Standard Dimension	Allowance
1/2	1/8	+0.002 0	0.560	+0.01 0
9/16	1/8	+0.002 0	0.623	+0.01 0
5/8	3/16	+0.002 0	0.709	+0.01 0
11/16	3/16	+0.002 0	0.773	+0.01 0
3/4	3/16	+0.002 0	0.837	+0.01 0
13/16	3/16	+0.002 0	0.900	+0.01 0
7/8	3/16	+0.002 0	0.964	+0.01 0
15/16	1/4	+0.002 0	1.051	+0.01 0
1	1/4	+0.002 0	1.114	+0.01 0
1-1/8	1/4	+0.002 0	1.241	+0.01 0
1-1/4	1/4	+0.002 0	1.367	+0.01 0
1-3/8	5/16	+0.002 0	1.518	+0.01 0
1-1/2	3/8	+0.002 0	1.669	+0.01 0
1-5/8	3/8	+0.002 0	1.796	+0.01 0
1-3/4	3/8	+0.002 0	1.922	+0.01 0