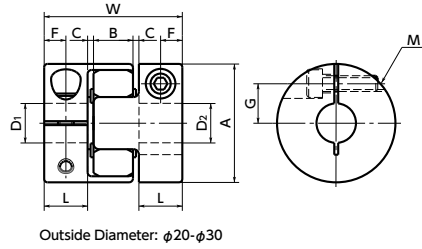
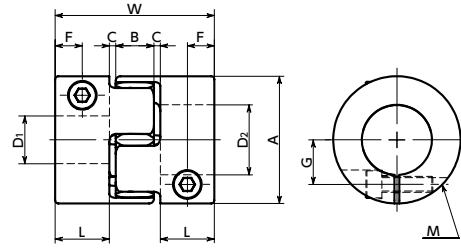


MJS-CS Flexible Coupling - Jaw - Type (Short) - Clamping Type Additional Size

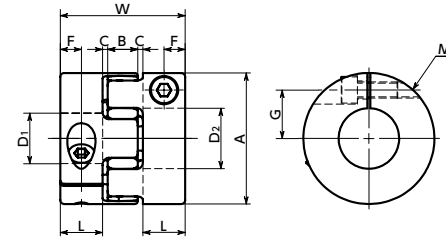
WEB Selection Tool WEB CAD Download High torque Vibration absorption Electrical Insulation



Outside Diameter: φ20-φ30

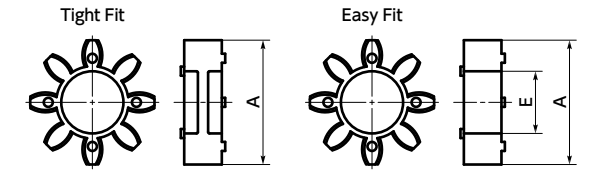


Outside Diameter: φ40



Outside Diameter: φ55 / φ65

Sleeve Details



Ambient Temperature / Temperature Correction Factor

Ambient Temperature	Temperature Correction Factor
-20°C to 30°C	1.00
30°C to 40°C	0.80
40°C to 60°C	0.70

Dimensions

Unit : mm

Part Number	Bore Diameter	A	L	W	B	C*1	Sleeve E	F	G	M	Screw Tightening Torque (N·m)
MJS-20CS	3 - 8	20	7	24	8	1	6	3.5	6.5	M2.5	1
MJS-25CS	4 - 10	25	8	26	8	1	8	4	9	M3	1.5
	11 - 12								9.5	M2.5	1
MJS-30CS	6 - 12	30	9.5	32	10	1.5	10	4.75	10	M4	3.5
	14 - 16								11	M3	1.5
MJS-40CS	8 - 20	40	17	50	12	2	17	8.5	14	M5	8
	22 - 25								15.75	M4	3.5
MJS-55CS	10 - 28	55	18	54	14	2	26	9	20	M6	13
	30 - 32								21	M5	8
MJS-65CS	14 - 32	65	21	62	15	2.5	29.5	10.5	24	M8	28
	35 - 38								25	M6	13

*1: Use with C Dimension

Part Number	Standard Bore Diameter																										
	D1 · D2	3	4	4.5	5	6	6.35	7	8	9.525	10	11	12	14	15	16	18	19	20	22	24	25	28	30	32	35	38
MJS-20CS	●	●	●	●	●	●	●	●	●																		
MJS-25CS		●	●	●	●	●	●	●	●	●	●	●	●														
MJS-30CS					●	●	●	●	●	●	●	●	●	●	●	●											
MJS-40CS						●	●	●	●	●	●	●	●	●	●	●	●	●	●	●	●	●	●	●	●	●	●
MJS-55CS								●	●	●	●	●	●	●	●	●	●	●	●	●	●	●	●	●	●	●	●
MJS-65CS										●	●	●	●	●	●	●	●	●	●	●	●	●	●	●	●	●	●

- All products are provided with hex socket head cap screw.
- Recommended dimensional allowances of applicable shaft diameter are h6 and h7.
- A set of hubs with clamping type for one side and clamping + key type for the other side is available upon request.
- In case of mounting on D-cut shaft, be careful about the position of the D-cut surface of the shaft. → P.xxxx

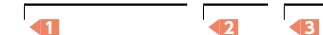
Performance

Part Number	Sleeve		Max. Bore Diameter (mm)	Rated*1 torque (N·m)	Max.*1 torque (N·m)	Zero Backlash*3 Allowable Transmission Torque (N·m)	Max. Rotational Frequency (min ⁻¹)	Moment*2 of Inertia (kg·m ²)	Static Torsional Stiffness (N·m / rad)	Max. Lateral Misalignment (mm)	Max. Angular Misalignment (°)	Max. Axial Misalignment (mm)	Mass*2 (g)	Sleeve Hardness (JIS)
	Tight Fit	Easy Fit												
MJS-20CS	BL	EBL	8	1.8	3.6	0.2	31000	8.4x 10 ⁻⁷	16	0.2	1	+0.8 0	15	A80
MJS-25CS	BL	EBL	12	3	6	0.4	25000	2.6 x 10 ⁻⁶	32	0.2	1	+0.9 0	26	
MJS-30CS	BL	EBL	16	4	8	0.5	21000	5.5 x 10 ⁻⁶	46	0.2	1	+1.0 0	39	
MJS-40CS	BL	EBL	25	4.9	9.8	1.2	15000	2.7 x 10 ⁻⁵	380	0.15	1	+1.2 0	100	
MJS-55CS	BL	EBL	32	17	34		11000	1.1 x 10 ⁻⁴	1400	0.2	1	+1.4 0	210	
MJS-65CS	BL	EBL	38	46	92		9000	2.4 x 10 ⁻⁴	2800	0.2	1	+1.5 0	340	
MJS-20CS	WH	EWH	8	3	6	0.2	31000	8.4x 10 ⁻⁷	29	0.15	1	+0.8 0	15	A92
MJS-25CS	WH	EWH	12	5	10	0.4	25000	2.6 x 10 ⁻⁶	60	0.15	1	+0.9 0	26	
MJS-30CS	WH	EWH	16	7.5	15	0.5	21000	5.5 x 10 ⁻⁶	73	0.15	1	+1.0 0	39	
MJS-40CS	WH	EWH	25	10	20	1.2	15000	2.7 x 10 ⁻⁵	570	0.1	1	+1.2 0	100	
MJS-55CS	WH	EWH	32	35	70		11000	1.1 x 10 ⁻⁴	1600	0.15	1	+1.4 0	210	
MJS-65CS	WH	EWH	38	95	190		9000	2.4 x 10 ⁻⁴	3000	0.15	1	+1.5 0	340	
MJS-20CS	RD	ERD	8	5	10	0.2	31000	8.4x 10 ⁻⁷	55	0.1	1	+0.8 0	15	A98
MJS-25CS	RD	ERD	12	7.2	14.4	0.4	25000	2.6 x 10 ⁻⁶	120	0.1	1	+0.9 0	26	
MJS-30CS	RD	ERD	16	12.5	25	0.5	21000	5.5 x 10 ⁻⁶	130	0.1	1	+1.0 0	39	
MJS-40CS	RD	ERD	25	17	34	1.2	15000	2.7 x 10 ⁻⁵	1200	0.1	1	+1.2 0	100	
MJS-55CS	RD	ERD	32	60	120		11000	1.1 x 10 ⁻⁴	2600	0.1	1	+1.4 0	210	
MJS-65CS	RD	ERD	38	160	320		9000	2.4 x 10 ⁻⁴	4900	0.1	1	+1.5 0	340	
MJS-20CS	GR	EGR	8	6	12	0.2	31000	8.4x 10 ⁻⁷	87	0.08	1	+0.8 0	15	D64
MJS-25CS	GR	EGR	12	9.6	19.2	0.4	25000	2.6 x 10 ⁻⁶	160	0.08	1	+0.9 0	26	
MJS-30CS	GR	EGR	16	16	32	0.5	21000	5.5 x 10 ⁻⁶	200	0.08	1	+1.0 0	39	
MJS-40CS	GR	EGR	25	21	42	1.2	15000	2.7 x 10 ⁻⁵	3000	0.08	1	+1.2 0	100	
MJS-55CS	GR	EGR	32	75	150		11000	1.1 x 10 ⁻⁴	9000	0.08	1	+1.4 0	210	
MJS-65CS	GR	EGR	38	200	400		9000	2.4 x 10 ⁻⁴	13000	0.08	1	+1.5 0	340	

- *1: Correction of rated torque and max. torque due to load fluctuation is not required. However, if ambient temperature exceeds 30°C, be sure to correct the rated torque and max. torque with temperature correction factor shown in the table. **MJS-CS**'s allowable operating temperature is -20°C to 60°C.
- *2: These are values with max. bore diameter.
- *3: For transmission with Zero Backlash, please use a tight fit sleeve.

Part number specification

MJS-55CS-EGR-14-16



Additional Keyway at Shaft Hole → P.xxxx Cleanroom Wash & Packaging → P.xxxx Change to Stainless Steel Screw → P.xxxx Available / Add'l charge Please feel free to contact us Available / Add'l charge