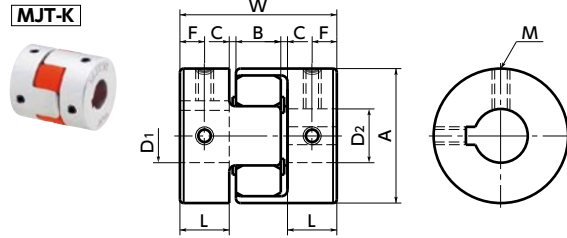
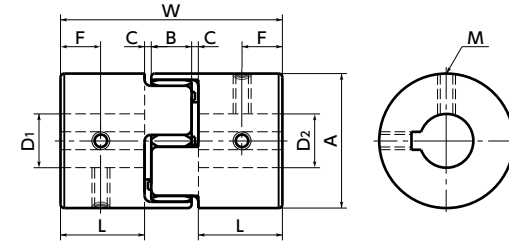


MJT-K Flexible coupling - Jaw - type - Set screw + Key type **NEW**

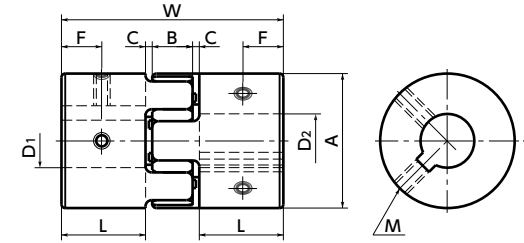
WEB Selection Tool WEB CAD Download High torque Vibration absorption Electrical Insulation



Outside Diameter: φ30



Outside Diameter: φ40



Outside Diameter: φ55 - φ95

Dimensions

Unit : mm

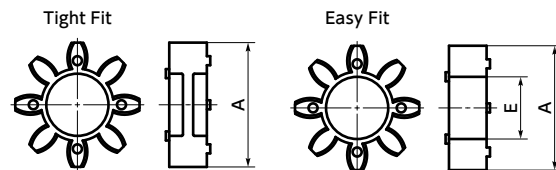
Part Number	A	L	W	B	C*1	Sleeve E	F	M	Screw Tightening Torque (N·m)
MJT-30K	30	11	35	10	1.5	11	5.5	M4	1.7
MJT-40K	40	25	66	12	2	18	12.5	M5	4
MJT-55K	55	30	78	14	2	27.5	15	M6	7
MJT-65K	65	35	90	15	2.5	31	17.5	M8	15
MJT-80K	80	45	114	18	3	37	22.5	M8	15
MJT-95K	95	50	126	20	3	45.5	25	M8	15

*1 Use with C Dimension

Part Number	Standard Bore Diameter (dimensional allowance H8)																									
	D1	D2	10	11	12	14	15	16	18	19	20	22	24	25	28	30	32	35	38	40	42	45	48	50	55	
MJT-30K	●	●	●	●																						
MJT-40K	●	●	●	●	●	●																				
MJT-55K					●	●	●	●	●																	
MJT-65K					●	●	●	●	●																	
MJT-80K										●	●	●	●	●												
MJT-95K																					●	●	●			

- All products are provided with hex socket set screw.
- Recommended dimensional allowances of applicable shaft diameter are h6 and h7.
- A set of hubs with key type for one side and clamping type or other type for the other side is available upon request.

Sleeve Details



Ambient Temperature / Temperature Correction Factor

Ambient Temperature	Temperature Correction Factor
-20°C to 30°C	1.00
30°C to 40°C	0.80
40°C to 60°C	0.70

Part number specification

MJT-95-RD-42-45 **1 set**

MJT-40-RD-SLV **Single sleeve**



Performance

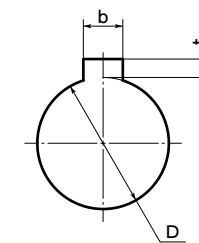
Part Number	Sleeve		Max. Bore Diameter (mm)	Rated*1 torque (N·m)	Max.*1 torque (N·m)	Zero Backlash*3 Allowable Transmission Torque (N·m)	Max. Rotational Frequency (min ⁻¹)	Moment*2 of Inertia (kg·m ²)	Static Torsional Stiffness (N·m / rad)	Max. Lateral Misalignment (mm)	Max. Angular Misalignment (°)	Max. Axial Misalignment (mm)	Mass*2 (g)	Sleeve Hardness (JIS)
	Tight Fit	Easy Fit												
MJT-30K	BL	EBL	16	4	8	0.5	21000	6.1×10 ⁻⁶	46	0.2	1	+1.0 0	43	A80
MJT-40K	BL	EBL	25	4.9	9.8	1.2	15000	3.6×10 ⁻⁵	380	0.15	1	+1.2 0	130	
MJT-55K	BL	EBL	32	17	34		11000	1.6×10 ⁻⁴	1400	0.2	1	+1.4 0	310	
MJT-65K	BL	EBL	38	46	92		9000	3.6×10 ⁻⁴	2800	0.2	1	+1.5 0	510	
MJT-80K	BL	EBL	45	95	190		7000	1.1×10 ⁻³	3200	0.2	1	+1.8 0	1000	
MJT-95K	BL	EBL	55	130	260		6000	2.3×10 ⁻³	3600	0.2	1	+2.0 0	1500	A92
MJT-30K	WH	EWH	16	7.5	15	0.5	21000	6.1×10 ⁻⁶	73	0.15	1	+1.0 0	43	
MJT-40K	WH	EWH	25	10	20	1.2	15000	3.6×10 ⁻⁵	570	0.1	1	+1.2 0	130	
MJT-55K	WH	EWH	32	35	70		11000	1.6×10 ⁻⁴	1600	0.15	1	+1.4 0	310	
MJT-65K	WH	EWH	38	95	190		9000	3.6×10 ⁻⁴	3000	0.15	1	+1.5 0	510	
MJT-80K	WH	EWH	45	190	380		7000	1.1×10 ⁻³	5300	0.15	1	+1.8 0	1000	A98
MJT-95K	WH	EWH	55	265	530		6000	2.3×10 ⁻³	6200	0.15	1	+2.0 0	1500	
MJT-30K	RD	ERD	16	12.5	25	0.5	21000	6.1×10 ⁻⁶	130	0.1	1	+1.0 0	43	
MJT-40K	RD	ERD	25	17	34	1.2	15000	3.6×10 ⁻⁵	1200	0.1	1	+1.2 0	130	
MJT-55K	RD	ERD	32	60	120		11000	1.6×10 ⁻⁴	2600	0.1	1	+1.4 0	310	
MJT-65K	RD	ERD	38	160	320		9000	3.6×10 ⁻⁴	4900	0.1	1	+1.5 0	510	
MJT-80K	RD	ERD	45	325	650		7000	1.1×10 ⁻³	6500	0.1	1	+1.8 0	1000	
MJT-95K	RD	ERD	55	450	900		6000	2.3×10 ⁻³	8900	0.1	1	+2.0 0	1500	

*1 Correction of rated torque and max. torque due to load fluctuation is not required. However, if ambient temperature exceeds 30°C, be sure to correct the rated torque and max. torque with temperature correction factor shown in the table. MJT-K's allowable operating temperature is -20°C to 60°C.

*2 These are values with max. bore diameter.

*3 For transmission of Zero Backlash, please use a tight fit sleeve.

Details of Shaft Hole



Standard bore Diameter D	keyway				Key Nominal Dimension b x h
	b Standard Dimension	allowance (JS9)	t Standard Dimension	allowance	
10 · 11 · 12	4	±0.0150	1.8	+0.1 0	4×4
14 · 15 · 16	5	±0.0150	2.3	+0.1 0	5×5
18 · 19 · 20 · 22	6	±0.0150	2.8	+0.1 0	6×6
24 · 25 · 28 · 30	8	±0.0180	3.3	+0.2 0	8×7
32 · 35 · 38	10	±0.0180	3.3	+0.2 0	10×8
40 · 42	12	±0.0215	3.3	+0.2 0	12×8
45 · 48 · 50	14	±0.0215	3.8	+0.2 0	14×9
55	16	±0.0215	4.3	+0.2 0	16×10

● Excerpt from JIS B 1301

Additional Keyway at Shaft Hole → P. xxxx Cleanroom Wash & Packaging → P. xxxx Change to Stainless Steel Screw → P. xxxx Available / Add'l charge Available / Add'l charge Available / Add'l charge