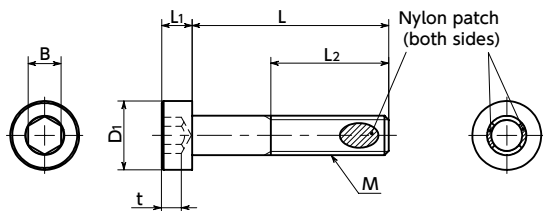


SLHS-ALK Low Profile Socket Head Cap Screws with Nylon Patch



Protrusion Vibration resistant treatment SUS Stainless steel



● Material/Finish



	SLHS-ALK
Main Body	SUSXM7 (Equivalent to SUS304)
Nylon Patch	Nylon 11
Strength Class	A2-50 or more

- Hex socket head cap screws with low profile and nylon patch.
- The friction of the nylon adhered to the thread suppresses the return rotation of the thread.
- Even if the tightening force is lost, the return rotation is suppressed, preventing the screws from falling off.
- The heat resistant temperature of the nylon patch is 120°C.
- For space-saving of equipment/devices and applications with limited overhead space.

● Application

Reducing the size of equipment and devices
Screw return and fallout prevented

Unit : mm

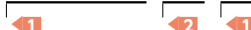
Part Number	M (Coarse)		L	D1	L1	B	t	L2*1	Max. Tightening Torque (N·m)	Mass (g)	Qty per Pack
	Nominal of Thread	Pitch									
SLHS-M2-ALK	M2	0.4	5 6 8 10 12	3.8	1.3	1.3	0.7	Full Thread	0.18	0.13 - 0.29	50
SLHS-M2.5-ALK	M2.5	0.45	5 6 8 10 12	4.5	1.6	1.5	1	Full Thread	0.36	0.26 - 0.47	50
SLHS-M3-ALK	M3	0.5	5 6 8 10 12 16 20	5.5	2	2	1.5	12(L=20)	0.6	0.5 - 1.2	50
SLHS-M4-ALK	M4	0.7	6 8 10 12 16 20 25	7	2.8	2.5	2.3	Full Thread	1.5	1.1 - 2.8	50
SLHS-M5-ALK	M5	0.8	8 10 12 16 20 25 30 35	8.5	3.5	3	2.7	16(L≥30)	3.1	1.8 - 5.7	50
SLHS-M6-ALK	M6	1	8 10 12 16 20 25 30 35 40 45	10	4	4	3	18(L≥30)	5.3	3.1 - 11	20
SLHS-M8-ALK	M8	1.25	10 12 16 20 25 30 35 40 45 50	13	5	5	3.8	22(L≥35)	12	7.2 - 22	20
SLHS-M10-ALK	M10	1.5	16 20 25 30 35 40 45 50 16	16	6	6	4.5	32(L≥45)	25	15 - 33	10

*1: If the "L" value is not in parentheses, the screw is full thread.

- When purchasing less volume than one full bag, a separate handling fee is charged. For details, see the Sold Separately Service.

● Part Number Specification

SLHS-M5-20-ALK



Individual Sales	Cleanroom Wash & Packaging	Screw Length Adjustment	Vibration Resistant	Modification process for captive use
Available / Add'l charge	Available / Add'l charge	Not Available	Not Available	Not Available