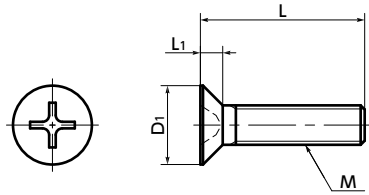


# SPA-F Plastic Cross Recessed Flat Head Machine Screws - RENY

High strength Lightweight High Specific Strength



Material/Finish



| SPA-F                         |   |
|-------------------------------|---|
| Main Body                     | RENY™*1 (50% Glass Fiber Reinforced Polyamide MXD6) (Ivory) |
| Heat Resistance Temperature*2 | 105°C   |

\*1: RENY™ is a trademark or registered trademark of Mitsubishi Gas Chemical Company, Inc.  
 \*2: This is the value for the resin material. The operating temperature of the product changes with performance conditions such as tightening torque.

- RENY™ Phillips cross recessed flat head machine screws.
- RENY™ is a thermoplastic engineering plastic with excellent tensile and bending strength.
- It is highly fatigue-resistant and has excellent creep and heat insulation properties.
- While it is nearly as strong as metal, its weight is approximately 1/5 of iron.
- For the properties and precautions for use of plastic screws, see "Properties of Plastic Screws."

Application

Heat insulation and dew condensation prevention of refrigerating and freezing facilities  
 Electrical and electronic equipment / Offshore instruments / Plating facilities



| Part Number      | M (Coarse)        |       | L                    | D1  | L1   | Cross-recessed Socket No. | Tensile Breaking Load*1 (N) | Torsional Torque*1 (N·m) | Mass (g)      | Qty per Pack |
|------------------|-------------------|-------|----------------------|-----|------|---------------------------|-----------------------------|--------------------------|---------------|--------------|
|                  | Nominal of Thread | Pitch |                      |     |      |                           |                             |                          |               |              |
| SPA-M2-F         | M2                | 0.4   | 4 6 8 10             | 4   | 1.2  | 1                         | 350                         | 0.101                    | 0.038 - 0.053 | 50           |
| SPA-M2-F(100)    | M2                | 0.4   | 6 8 10               | 4   | 1.2  | 1                         | 350                         | 0.101                    | 0.038 - 0.053 | 100          |
| SPA-M2-F(1000)   | M2                | 0.4   | 6 8 10               | 4   | 1.2  | 1                         | 350                         | 0.101                    | 0.038 - 0.053 | 1000         |
| SPA-M2.6-F       | M2.6              | 0.45  | 4 6 8 10 12          | 5.2 | 1.5  | 1                         | 611                         | 0.22                     | 0.043 - 0.094 | 50           |
| SPA-M2.6-F(100)  | M2.6              | 0.45  | 6 8 10 12            | 5.2 | 1.5  | 1                         | 611                         | 0.22                     | 0.043 - 0.094 | 100          |
| SPA-M2.6-F(1000) | M2.6              | 0.45  | 6 8 10 12            | 5.2 | 1.5  | 1                         | 611                         | 0.22                     | 0.043 - 0.094 | 1000         |
| SPA-M3-F         | M3                | 0.5   | 5 6 8 10 12 15 20 25 | 6   | 1.75 | 2                         | 853                         | 0.36                     | 0.1 - 0.25    | 50           |
| SPA-M3-F(100)    | M3                | 0.5   | 6 8 10 12 15 20 25   | 6   | 1.75 | 2                         | 853                         | 0.36                     | 0.1 - 0.25    | 100          |
| SPA-M3-F(1000)   | M3                | 0.5   | 6 8 10 12 15 20 25   | 6   | 1.75 | 2                         | 853                         | 0.36                     | 0.1 - 0.25    | 1000         |
| SPA-M4-F         | M4                | 0.7   | 6 8 10 12 15 20 25   | 8   | 2.3  | 2                         | 1499                        | 0.85                     | 0.22 - 0.52   | 50           |
| SPA-M4-F(100)    | M4                | 0.7   | 6 8 10 12 15 20 25   | 8   | 2.3  | 2                         | 1499                        | 0.85                     | 0.22 - 0.52   | 100          |
| SPA-M4-F(1000)   | M4                | 0.7   | 6 8 10 12 15 20      | 8   | 2.3  | 2                         | 1499                        | 0.85                     | 0.22 - 0.45   | 1000         |
| SPA-M4-F(500)    | M4                | 0.7   | 25                   | 8   | 2.3  | 2                         | 1499                        | 0.85                     | 0.52          | 500          |
| SPA-M5-F         | M5                | 0.8   | 10 12 15 20 25       | 10  | 2.8  | 2                         | 2407                        | 1.65                     | 0.52 - 0.86   | 20           |
| SPA-M5-F(100)    | M5                | 0.8   | 10 12 15 20 25       | 10  | 2.8  | 2                         | 2407                        | 1.65                     | 0.52 - 0.86   | 100          |
| SPA-M5-F(1000)   | M5                | 0.8   | 10 12                | 10  | 2.8  | 2                         | 2407                        | 1.65                     | 0.52 - 0.56   | 1000         |
| SPA-M5-F(500)    | M5                | 0.8   | 15 20 25             | 10  | 2.8  | 2                         | 2407                        | 1.65                     | 0.66 - 0.86   | 500          |
| SPA-M6-F         | M6                | 1     | 10 12 15 20 25 30    | 12  | 3.4  | 3                         | 3106                        | 2.74                     | 0.83 - 1.6    | 20           |
| SPA-M6-F(100)    | M6                | 1     | 10 12 15 20 25 30    | 12  | 3.4  | 3                         | 3106                        | 2.74                     | 0.83 - 1.6    | 100          |
| SPA-M6-F(500)    | M6                | 1     | 10 12 15             | 12  | 3.4  | 3                         | 3106                        | 2.74                     | 0.83 - 1      | 500          |
| SPA-M6-F(250)    | M6                | 1     | 20 25 30             | 12  | 3.4  | 3                         | 3106                        | 2.74                     | 1.2 - 1.6     | 250          |
| SPA-M8-F         | M8                | 1.25  | 15 20 25 30          | 16  | 4.4  | 3                         | 5335                        | 6.22                     | 2.1 - 3.1     | 10           |
| SPA-M8-F(100)    | M8                | 1.25  | 15 20 25 30          | 16  | 4.4  | 3                         | 5335                        | 6.22                     | 2.1 - 3.1     | 100          |
| SPA-M8-F(250)    | M8                | 1.25  | 15                   | 16  | 4.4  | 3                         | 5335                        | 6.22                     | 2.1           | 250          |
| SPA-M8-F(200)    | M8                | 1.25  | 20 25                | 16  | 4.4  | 3                         | 5335                        | 6.22                     | 2.4 - 2.8     | 200          |

\*1: Values in chart are for reference only. They are not guaranteed values. The recommended tightening torque is 50% of the torsional torque.

• When purchasing less volume than one full bag, a separate handling fee is charged. For details, see the Sold Separately Service.

|                          |                            |                         |                     |                                      |
|--------------------------|----------------------------|-------------------------|---------------------|--------------------------------------|
| Individual Sales         | Cleanroom Wash & Packaging | Screw Length Adjustment | Vibration Resistant | Modification process for captive use |
| Available / Add'l charge | Available / Add'l charge   | Not Available           | Not Available       | Not Available                        |

Part Number Specification

