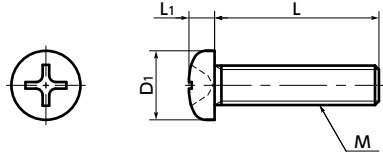


# SPC-P Plastic Cross Recessed Pan Head Machine Screws - PC

Lightweight Electrical Insulation



- PC (polycarbonate) Phillips cross recessed pan head machine screws.
- PC (polycarbonate) has the highest shock resistance of engineering plastics.
- Allowable operating temperature\*2 (min./max.): -40°C/115°C
- PC has low water absorbency and excellent weather resistance.
- For the properties and precautions for use of plastic screws, see "Properties of Plastic Screws."

### • Application

Electrical and electronic equipment

### • Material/Finish



	SPC-P
Main Body	PC (Polycarbonate) (Transparent)*1
Heat Resistance Temperature*2	115°C

\*1 : **SPC-M1.7-3-P** and **SPC-M1.7-4-P** are black.

\*2 : This is the value for the resin material. The operating temperature of the product changes with performance conditions such as tightening torque.



Unit : mm

Part Number	M (Coarse)		D1	L1	Cross-recessed Socket No.	Tensile Breaking Load*1 (N)	Torsional Torque*1 (N·m)	Mass (g)	Qty per Pack
	Nominal of Thread	Pitch							
<b>SPC-M1.7-P</b>	M1.7	0.35	2.5	0.5	0	51	0.022	0.0066 - 0.0085	50
<b>SPC-M2-P</b>	M2	0.4	3.5	1.3	1	107	0.055	0.02 - 0.053	50
<b>SPC-M2-P(1000)</b>	M2	0.4	3.5	1.3	1	107	0.055	0.02 - 0.053	1000
<b>SPC-M2.6-P</b>	M2.6	0.45	4.5	1.7	1	196	0.12	0.052 - 0.1	50
<b>SPC-M2.6-P(1000)</b>	M2.6	0.45	4.5	1.7	1	196	0.12	0.052 - 0.1	1000
<b>SPC-M3-P</b>	M3	0.5	5.5	2	2	266	0.18	0.062 - 0.22	50
<b>SPC-M3-P(1000)</b>	M3	0.5	5.5	2	2	266	0.18	0.062 - 0.22	1000
<b>SPC-M4-P</b>	M4	0.7	7	2.6	2	481	0.39	0.13 - 0.51	50
<b>SPC-M4-P(1000)</b>	M4	0.7	7	2.6	2	481	0.39	0.13 - 0.3	1000
<b>SPC-M4-P(500)</b>	M4	0.7	7	2.6	2	481	0.39	0.35 - 0.51	500
<b>SPC-M5-P</b>	M5	0.8	9	3.3	2	797	0.8	0.28 - 0.84	50
<b>SPC-M5-P(1000)</b>	M5	0.8	9	3.3	2	797	0.8	0.28 - 0.4	1000
<b>SPC-M5-P(500)</b>	M5	0.8	9	3.3	2	797	0.8	0.45 - 0.65	500
<b>SPC-M5-P(250)</b>	M5	0.8	9	3.3	2	797	0.8	0.74 - 0.84	250
<b>SPC-M6-P</b>	M6	1	10.5	3.9	3	1136	1.2	0.6 - 1.6	20
<b>SPC-M6-P(500)</b>	M6	1	10.5	3.9	3	1136	1.2	0.6 - 0.76	500
<b>SPC-M6-P(250)</b>	M6	1	10.5	3.9	3	1136	1.2	0.87 - 1.3	250
<b>SPC-M6-P(200)</b>	M6	1	10.5	3.9	3	1136	1.2	1.4 - 1.6	200
<b>SPC-M8-P</b>	M8	1.25	14	5.2	3	2088	3.2	1.7 - 3.1	20
<b>SPC-M8-P(250)</b>	M8	1.25	14	5.2	3	2088	3.2	1.7 - 1.8	250
<b>SPC-M8-P(200)</b>	M8	1.25	14	5.2	3	2088	3.2	2.1 - 2.3	200
<b>SPC-M8-P(100)</b>	M8	1.25	14	5.2	3	2088	3.2	2.6 - 3.1	100

\*1 : Values in chart are for reference only. They are not guaranteed values. The recommended tightening torque is 50% of the torsional torque.

- M1.7 is black.
- When purchasing less volume than one full bag, a separate handling fee is charged. For details, see the Sold Separately Service.

Individual Sales	Cleanroom Wash & Packaging	Screw Length Adjustment	Vibration Resistant	Modification process for captive use
Available / Add'l charge	Available / Add'l charge	Available / Add'l charge	Not Available	Not Available

Part Number	L (mm)															
	3	4	5	6	8	10	12	15	16	18	20	25	30	35	40	
<b>SPC-M1.7-P</b>	●	●														
<b>SPC-M2-P</b>	●	●	●	●	●	●	●									
<b>SPC-M2-P(1000)</b>	●	●	●	●	●	●	●									
<b>SPC-M2.6-P</b>	●	●	●	●	●	●	●									
<b>SPC-M2.6-P(1000)</b>	●	●	●	●	●	●	●									
<b>SPC-M3-P</b>		●	●	●	●	●	●	●	●	●	●	●	●			
<b>SPC-M3-P(1000)</b>		●	●	●	●	●	●	●	●	●	●	●	●			
<b>SPC-M4-P</b>			●	●	●	●	●	●	●	●	●	●	●	●		
<b>SPC-M4-P(1000)</b>			●	●	●	●	●	●	●	●	●	●	●	●		
<b>SPC-M4-P(500)</b>				●	●	●	●	●	●	●	●	●	●	●		
<b>SPC-M5-P</b>					●	●	●	●	●	●	●	●	●	●		
<b>SPC-M5-P(1000)</b>					●	●	●	●	●	●	●	●	●	●		
<b>SPC-M5-P(500)</b>						●	●	●	●	●	●	●	●	●		
<b>SPC-M5-P(250)</b>							●	●	●	●	●	●	●	●		
<b>SPC-M6-P</b>						●	●	●	●	●	●	●	●	●		
<b>SPC-M6-P(500)</b>						●	●	●	●	●	●	●	●	●		
<b>SPC-M6-P(250)</b>								●	●	●	●	●	●	●		
<b>SPC-M6-P(200)</b>										●	●	●	●	●		
<b>SPC-M8-P</b>								●	●	●	●	●	●	●		
<b>SPC-M8-P(250)</b>								●	●	●	●	●	●	●		
<b>SPC-M8-P(200)</b>										●	●	●	●	●		
<b>SPC-M8-P(100)</b>												●	●	●		

### • Part Number Specification

**SPC-M5-20-P**