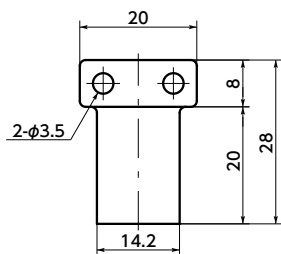
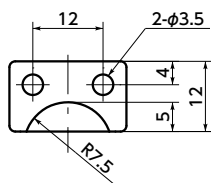
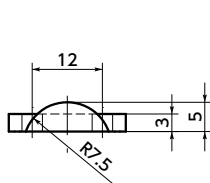
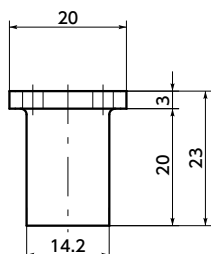


**FLE-A**

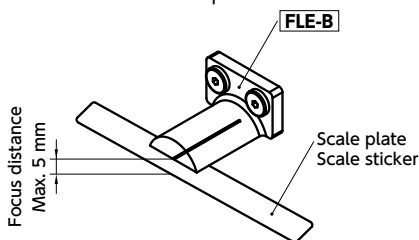


**FLE-B**



- Dedicated lens for the Scale Plate **FSP** (→ P.xxxx) and the Scale Sticker **FSS** **FST** (→ P.xxxx). It will make a scale reading easier.
- You can choose the Point Lens from the following two types of mounting methods according to your application.
  - FLE-A** — Front mounting
  - FLE-B** — Side mounting
- It is useful for displaying the home position of the actuator.
- Socket Head Cap Screw/Special Low Head made of stainless steel **SSHS-M3-10** (→ P.xxxx) for mounting is provided.

- Focus distance: Up to 5 mm



Part Number	Mass (g)
<b>FLE-28-20-A</b>	1.7
<b>FLE-23-20-B</b>	1.5

- Material/Finish

	<b>FLE</b>
Main body	Acrylic (transparent)
Thread	SUSXM7 (Equivalent to SUS304)



- Usage example  
Use the Point Lens in combination with the Scale Plate **FSP** or the Scale Sticker **FSS** **FST**.

**FSP** → P.xxxx



**FSS** **FST** → P.xxxx



- Part number specification

## FLE-28-20-A



Scale Plate / Scale sticker Length Adjustment → P.xxxx

Not Available