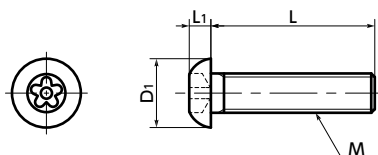


**SRGS****Button Head Cap Screws with Five - Lobe Holes (with Pin)**

Tamper Resistance SUS Stainless steel



- Material/Finish



	SRGS
Main Body	Equivalent to SUS304
Strength Class	Equivalent to A2-50

- Button head cap screws with a pin at the center of the five slots, inspired by plum blossoms. Also suitable for decorative uses.
- This prevents mounting and removing with regular tools.
- Install and remove with **SRGB** Dedicated Bits and **SRD** Dedicated Magnetic Screwdriver together.

- Application

Machinery / Tools / Equipment / Devices disassembly prevention / tampering prevention / Theft prevention for outdoor facilities / Security measures / Safety measures

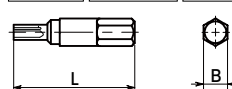
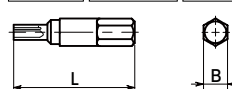
Part Number	M (Coarse)		L												D1	L1	Bit Part No.	Screwdriver Part No.	Mass (g)	Qty per pack
	Nominal of Thread	Pitch	6	8	10	12	16	20												
SRGS-M3	M3	0.5	6	8	10	12	16	20							5.7	1.65	SRGB-3	SRD-6.35	0.43 - 1	10
SRGS-M4	M4	0.7	6	8	10	12	16	20	25	30	40				7.6	2.2	SRGB-4	SRD-6.35	0.88 - 3.4	10
SRGS-M5	M5	0.8			10	12	16	20	25	30	40				9.5	2.75	SRGB-56	SRD-6.35	2.1 - 5.7	10
SRGS-M6	M6	1			10	12	16	20	25	30	40	50			10.5	3.3	SRGB-56	SRD-6.35	3.2 - 10	10
SRGS-M8	M8	1.25					16	20	25	30	40	50	14	4.4	SRGB-8	SRD-6.35			8.2 - 19	5

- When purchasing less volume than one full bag, a separate handling fee is charged. For details, see the Sold Separately Service.

- SRGB** Dedicated bits

Unit : mm

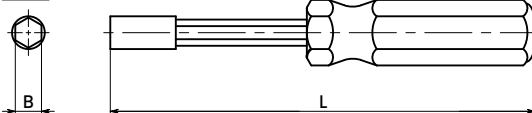
Part Number	L	B	Mass (g)
SRGB-3	32	6.35	6
SRGB-4	32	6.35	7.1
SRGB-56	32	6.35	7.5
SRGB-8	32	6.35	8.2

SRGB-3**SRGB-4****SRGB-56****SRGB-8**

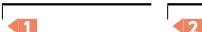
- SRD** Dedicated magnet screwdriver

Unit : mm

Part Number	L	B	Mass (g)
SRD-6.35	210	6.35	98

SRD

- Part number specification

SRGS-M5-16

Individual Sales → P.0000	Cleanroom Wash & Packaging → P.0000	Screw Length Adjustment → P.0000	Vibration Resistant → P.0000	Modification process for captive use → P.0000
Available / Add'l charge	Available / Add'l charge	Available / Add'l charge	Available / Add'l charge	Available / Add'l charge